

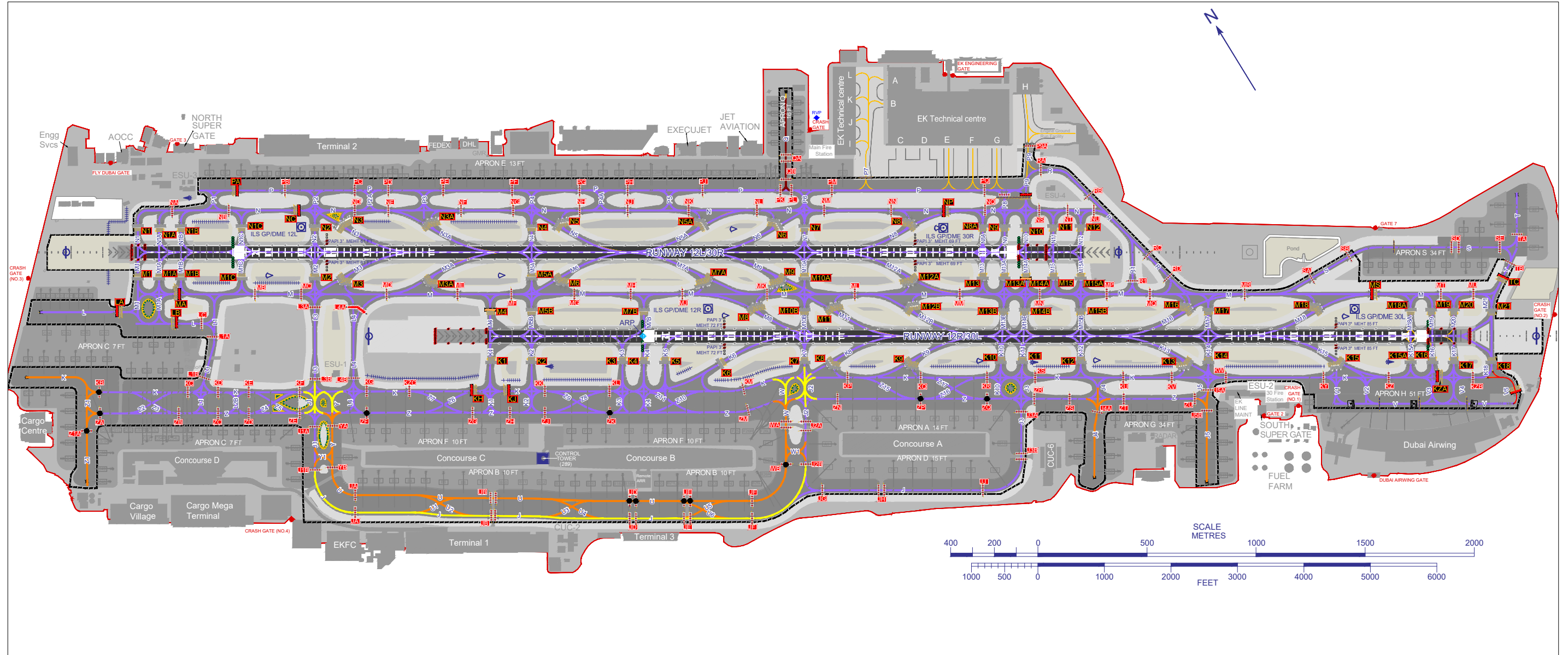
TAXIWAYS COMPATIBILITY CHART

ARP 251510N  
0552152E

AD ELEV 62 FT

DUBAI / INTL.  
UNITED ARAB EMIRATES

ELEVATIONS IN FEET AMSL  
DIMENSIONS IN METRES



CHANGES: Added MEHT - Editorial.

- Aircraft Code Restrictions**
- Code E aircraft and code F aircraft not permitted on adjacent Taxilane curves at the same time in any direction.
  - Code F aircraft pushed onto TXL J south of Concourse B & C must align / report on centre line before an aircraft can pass on TXL U.
  - Code F aircraft cannot be on TXL J & TXL J1 curve at the same time as Code E aircraft on TXL U & TXL Y curve.
  - Code F aircraft cannot be on TXL J & TXL J2 curve at the same time as Code E aircraft on TXL U & TXL W curve.
  - Code F aircraft cannot be on sections of TXL W & TXL J2 between TWY K & TXL Z at the same time.
  - Code F aircraft cannot be on sections of TXL J1 & TWY Y between TWY K & TXL Z at the same time.
  - Code F aircraft are only permitted to taxi behind when code D or smaller aircraft is at the RHP at TWY K1, TWY K2, TWY K3, TWY K4, and TWY K5.

LEGEND			
RVR		TWY Closed	
ILS - GP, LOC		IHP Stopbar	
DME		RWY Hold Stopbar CAT I	
LGTD WDI		RWY Hold Stopbar CAT II/III	
FOD Fence		RWY Hold Stopbar CAT I/II/III	
Buildings		Airside/Landside Gate	
IHP		RVP	
IHP Designator (Full Stopbar)		Stand CODE C	
RWY HLDG PSN Pattern A		Stand CODE D	
RWY HLDG PSN Pattern B		Stand CODE E	
RWY HLDG PSN Designator		Stand CODE F	
AD Boundary		Traffic Direction	
Code F (and below) Operations		IHP Without Signage	
Code F (and below) Operations - Restricted		ATC Service Boundary	
Code E (and below) Operations			
Code C (and below) Operations			