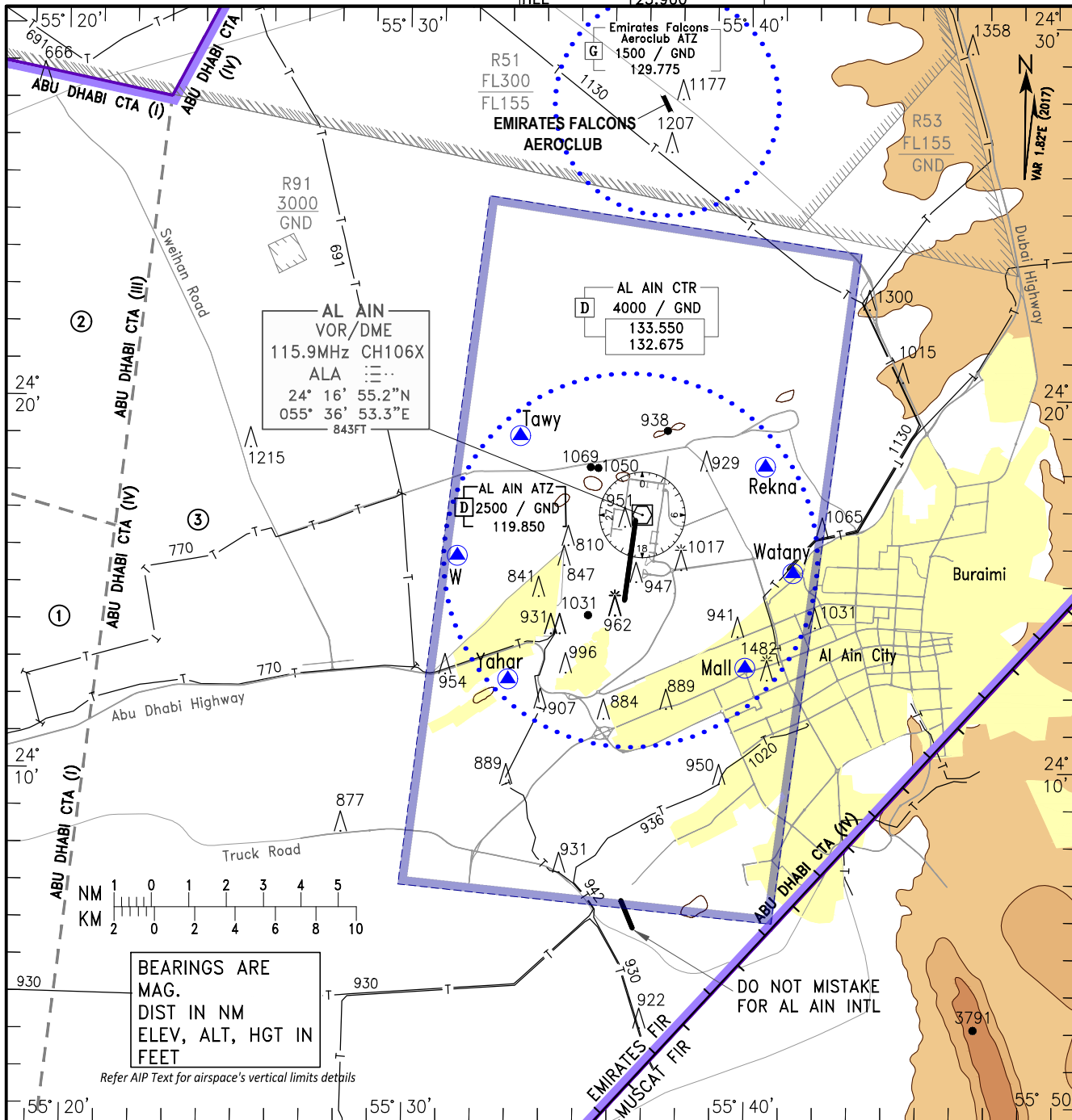


VFR Helicopter ENTRY/EXIT Points

AL AIN/INTL  
United Arab Emirates

AERODROME ELEV 865 FT

ATIS/D-ATIS 126.050  
APP 133.550(PRI)  
132.675(PRI)  
135.350(SRY)  
TWR 119.850  
GMC 129.150(ACFT)  
118.950(Vehicles)  
HEL 125.900



**LEGEND**

- Reporting Points
- CTA
- CTA Subdivisions
- ATZ
- CTR

**Yahar:** 241229N 0553300E  
**W:** 241547N 0553129E  
**Tawy:** 241901N 0553318E  
**Rekna:** 241814N 0554029E  
**Watany:** 241523N 0554119E  
**Mall:** 241250N 0553956E

**Local flying Restrictions**

**Propeller Aircrafts & Helicopters:**

- \* Circuit east of airport not authorised outside 3 NM from ALA VOR.
- \* Circuit west of airport not authorised over Sleimat or Al Yahar.

**Jet Aircrafts:**

- \* Minimum altitude over Buraimi Town is 6000 FT QNH

For Radio Communication Failure Refer  
OMAL AD 2.22.2

**ABU DHABI CTA (I) CENTRAL**

① [C] [G] FL155 / 1500<sup>(a)</sup>  
1500 / GND  
124.400

**ABU DHABI CTA (III) NORTH**

② [C] [G] 3000 / 1500  
1500 / GND  
135.150

**ABU DHABI CTA (IV) EAST**

③ [C] [G] 9500 / 2000  
2000 / GND  
133.550  
132.675

<sup>(a)</sup> Lower limit 2500 FT within the lateral limits of OMR 73

**Contour Legend**

- 4000
- 3000
- 2000
- 1000

CHANGES: Updated Local flying Restrictions.