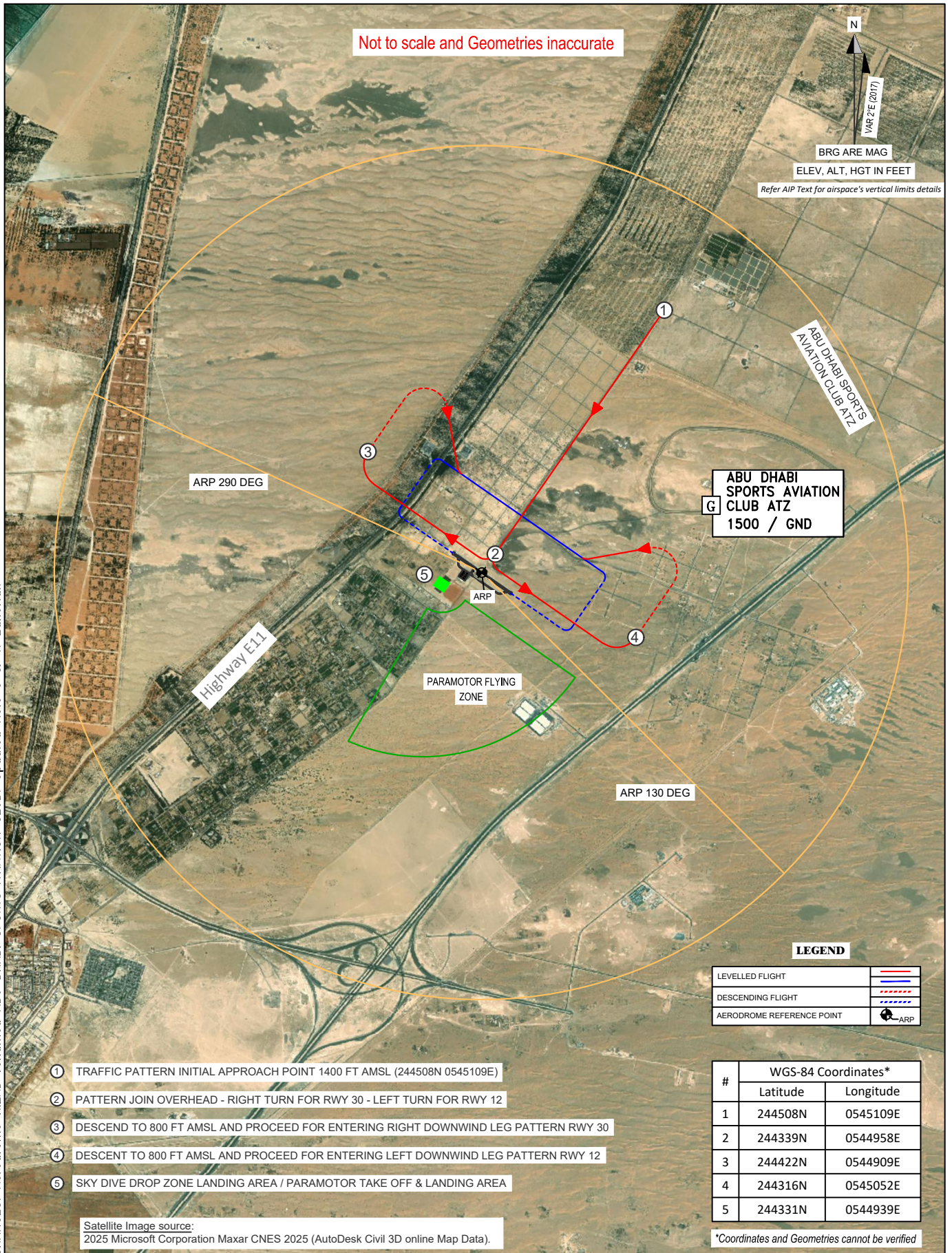


AD ELEV 16 FT ARP 244336N 0544956E

TIBA 121.375



Not to scale and Geometries inaccurate

N

BRG ARE MAG  
VAR 2°E (2017)

ELEV, ALT, HGT IN FEET

Refer AIP Text for airspace's vertical limits details

ABU DHABI SPORTS  
AVIATION CLUB ATZ

ABU DHABI  
SPORTS AVIATION  
CLUB ATZ  
1500 / GND

ARP 290 DEG

Highway E11

PARAMOTOR FLYING  
ZONE

ARP 130 DEG

LEGEND

LEVELLED FLIGHT	
DESCENDING FLIGHT	
AERODROME REFERENCE POINT	

- ① TRAFFIC PATTERN INITIAL APPROACH POINT 1400 FT AMSL (244508N 0545109E)
- ② PATTERN JOIN OVERHEAD - RIGHT TURN FOR RWY 30 - LEFT TURN FOR RWY 12
- ③ DESCEND TO 800 FT AMSL AND PROCEED FOR ENTERING RIGHT DOWNWIND LEG PATTERN RWY 30
- ④ DESCENT TO 800 FT AMSL AND PROCEED FOR ENTERING LEFT DOWNWIND LEG PATTERN RWY 12
- ⑤ SKY DIVE DROP ZONE LANDING AREA / PARAMOTOR TAKE OFF & LANDING AREA

Satellite Image source:  
2025 Microsoft Corporation Maxar CNES 2025 (AutoDesk Civil 3D online Map Data).

#	WGS-84 Coordinates*	
	Latitude	Longitude
1	244508N	0545109E
2	244339N	0544958E
3	244422N	0544909E
4	244316N	0545052E
5	244331N	0544939E

\*Coordinates and Geometries cannot be verified

CHANGES: Aerodrome KIZAD renamed ABU DHABI SPORTS AVIATION CLUB. Updated Note 3 & 4. Editorial.