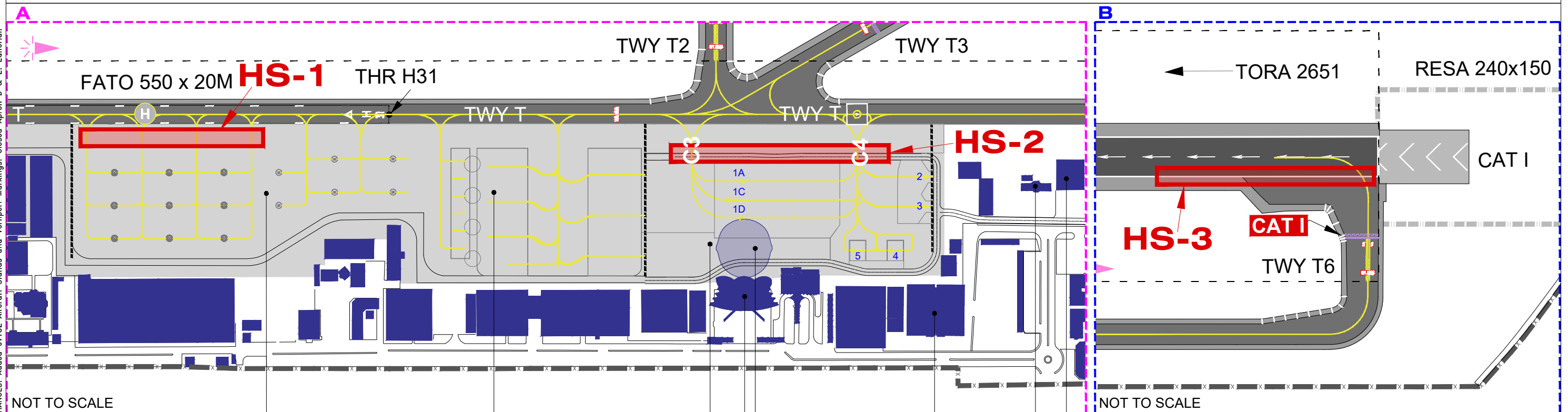


Hot Spot Location	Justification
HS-1 Apron B	Helicopter operations on Apron B and aircraft push back/nose out operations to Taxiway Tango. Increase in situational awareness when approaching Apron B.
HS-2 Apron C	Outer service road adjacent to Taxiway T. Increase in situational awareness when approaching Apron C.
HS-3 TWY T6	Dashed edge marking could be mistaken for runway centerline marking. Pilots to remain on the taxiway lead on marking and ensure aircraft is aligned on the runway centerline marking.

Remarks:
 1. For Taxiway and Apron details refer to UAE AIP OMAD AD 2.8.
 2. For Airfield Ground Lights, Stop bars and ITHPs information refer to OMAD AD-2-21C chart of this SUP.

ANNUAL RATE OF CHANGE 0.05°E
 ELEVATIONS IN FEET
 DIMENSIONS IN METRES
 BEARINGS ARE MAGNETIC

LEGEND
 HOT SPOT AREAS HS-1



CHANGES: Added eVTOL Aircraft Stands and Vertiport Markings. Closed Apron D & E. Editorial.