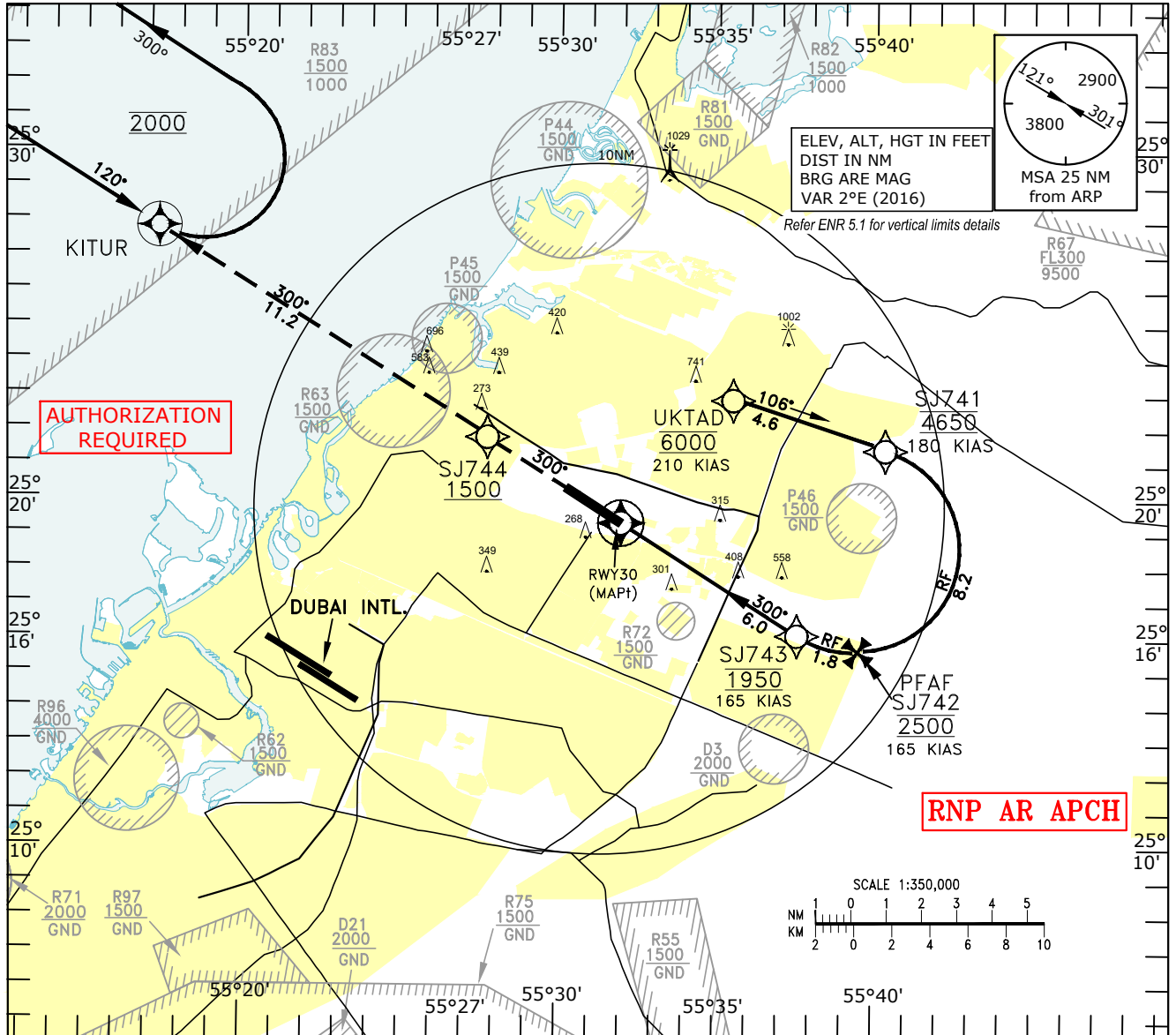


INSTRUMENT
APPROACH
CHART-ICAO

AD ELEV 119 FT
HEIGHTS RELATED TO
DTHR RWY30 ELEV 113 FT
MNM TEMP for VNAV 10°C

ATIS 122.400
DEP (N) 124.675
TWR 118.600
GND 121.875

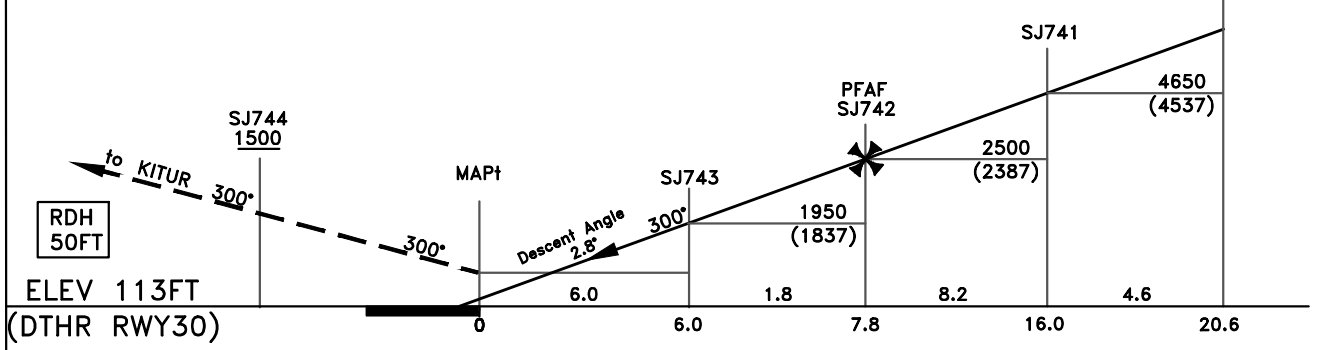
SHARJAH / Intl.
RNP Y RWY 30 (AR)
CAT A-D_L



MISSED APPROACH:
Climb to 1500' direct
to SJ744, then to KITUR,
hold at 2000'.

TL FL150
TA 13000

UKTAD
6000
(5887)



CHANGES: Removed D10. Editorial.

OCA (H)		A	B	C	D	DL	1. RF Required 2. Dual GNSS or IRU required				
Straight-in segment	RNP 0.3	393 (280)	405 (292)	413 (300)	424 (311)	424 (311)	3.7	2.7	1.7	0.7	
		Distance from RWY30	NM	7.7	6.7	5.7	4.7	3.7	2.7	1.7	0.7
		Altitude	FT	2450	2160	1860	1560	1260	960	660	370