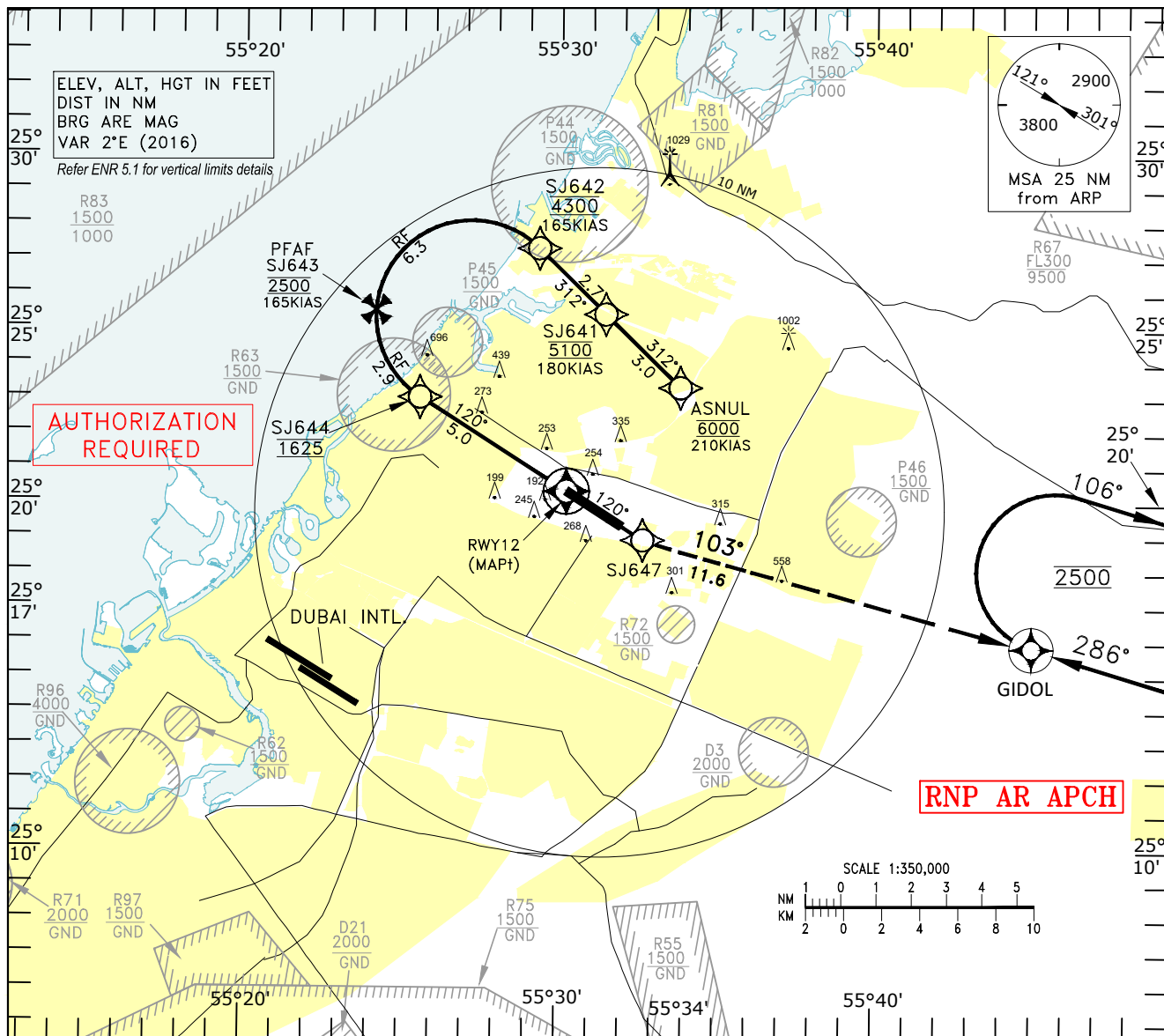


INSTRUMENT  
APPROACH  
CHART-ICAO

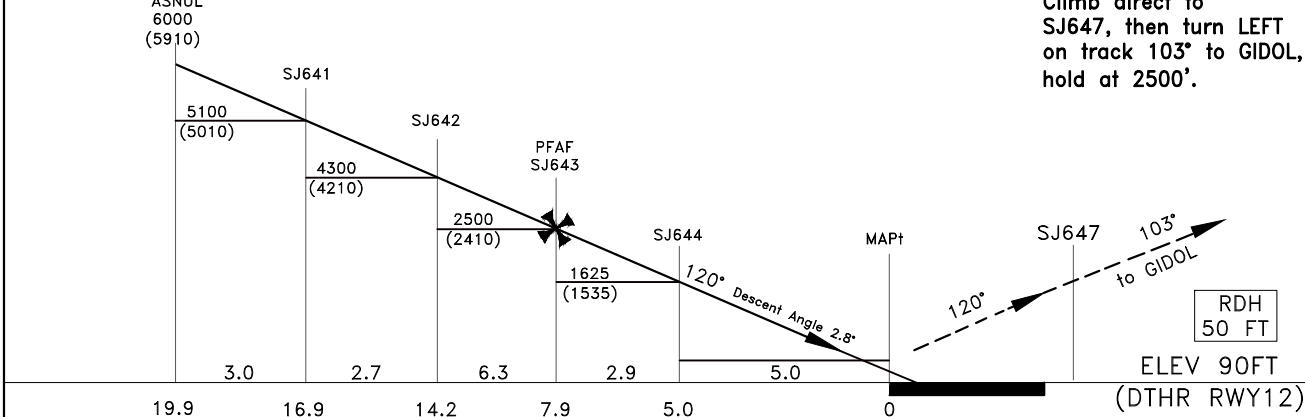
AD ELEV 119 FT  
HEIGHTS RELATED TO  
DTHR RWY12 ELEV 90 FT  
MNM TEMP for VNAV 10°C

ATIS 122.400  
DEP (N) 124.675  
TWR 118.600  
GND 121.875

SHARJAH / Intl.  
RNP Y RWY 12 (AR)  
CAT A-D<sub>L</sub>



MISSED APPROACH:  
Climb direct to  
SJ647, then turn LEFT  
on track 103° to GIDOL,  
hold at 2500°.



CHANGES: Amended HLDG ALT at GIDOL; Missed APCH. Editorial.