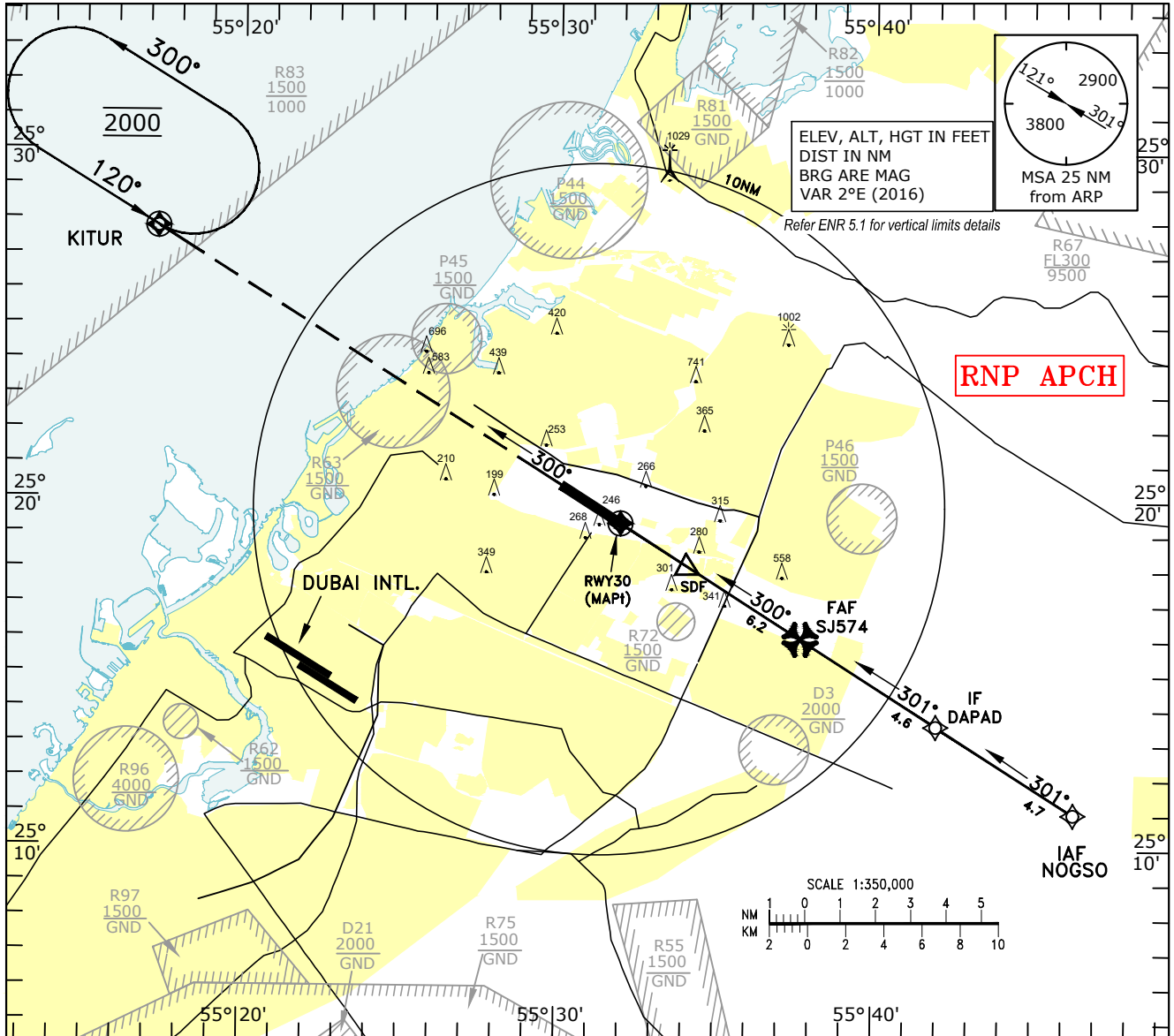


INSTRUMENT
APPROACH
CHART-ICAO

AD ELEV 119 FT
HGT RELATED TO
DTHR RWY30 ELEV 113 FT
MNM TEMP for VNAV 10°C

ATIS 122.400
DEP (N) 124.675
TWR 118.600
GND 121.875

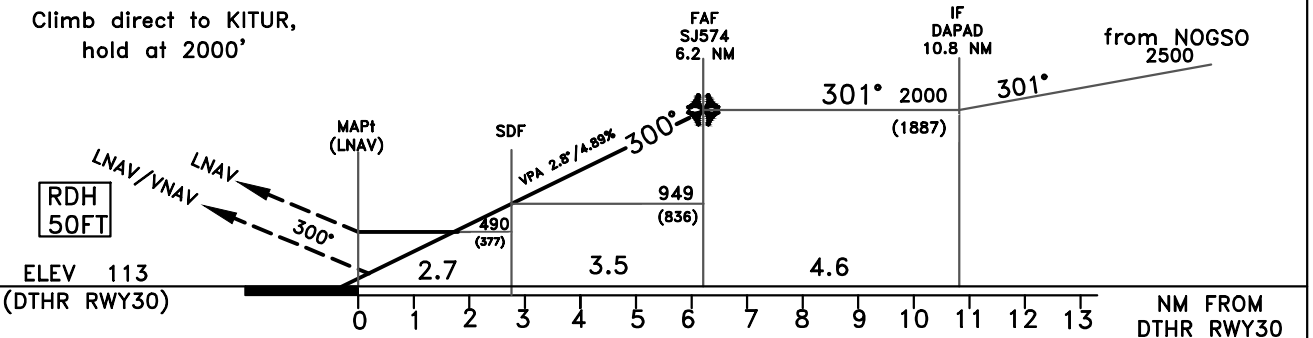
SHARJAH / Intl.
RNP Z RWY 30
CAT A-DL



MISSED APPROACH:

Climb direct to KITUR,
hold at 2000'

TL FL150
TA 13000



OCA(H)		A	B	C	D	DL			
Straight - in Approach	LNAV/VNAV	366(253)	379(266)	387(274)	397(284)	397(284)			
	LNAV	490(377)							
Circling		N/A							
		Distance from RWY30	NM	6.1	5.1	4.1	3.1	2.1	1.1
		Altitude	FT	1970	1670	1380	1080	780	480
		Ground Speed	KT	80	100	120	140	160	180
		Rate of Descent	FT/MIN	400	500	610	710	810	910

CHANGES: Removed D10. Editorial.