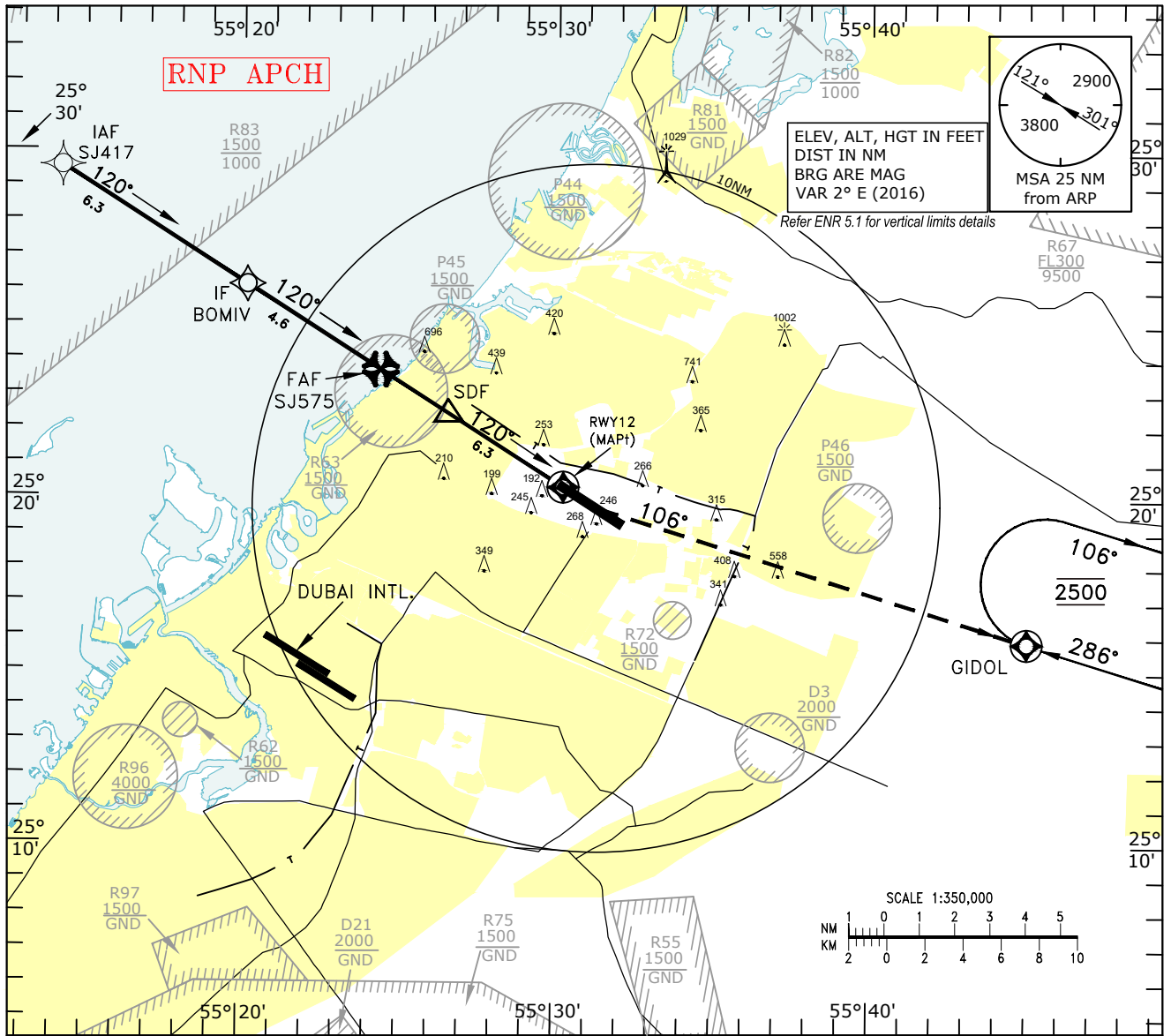


INSTRUMENT AD ELEV 119 FT
 APPROACH HEIGHTS RELATED TO
 CHART-ICAO DTHR RWY12 ELEV 90 FT
 MNM TEMP for VNAV 10°C

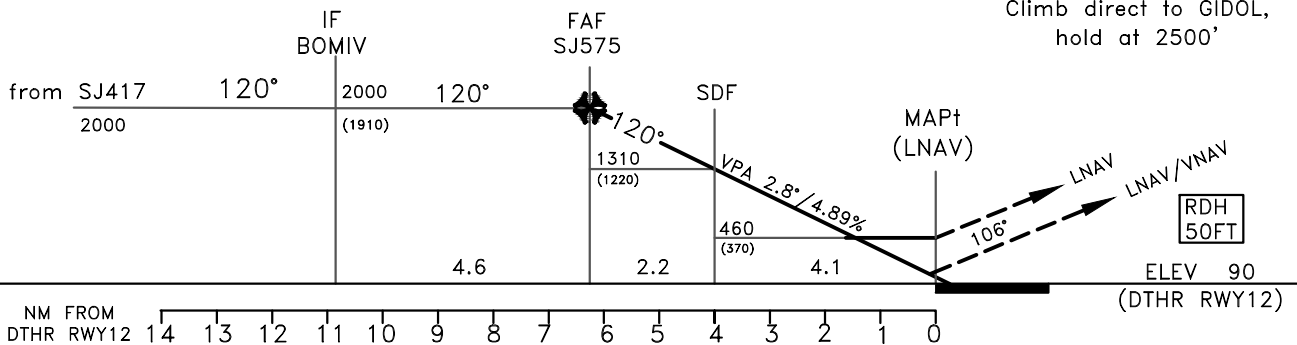
ATIS 122.400
 DEP (N) 124.675
 TWR 118.600
 GND 121.875

SHARJAH / Intl.
 RNP Z RWY 12
 CAT A-D_L



TL FL150
 TA 13000

MISSED APPROACH:
 Climb direct to GIDOL,
 hold at 2500'



OCA/H		A	B	C	D	D _L			
Straight - in Approach	LNNAV/VNAV	311(221)	324(234)	333(243)	343(253)	343(253)			
	LNNAV	460(370)							
Circling		N/A							
Minimum DH LNNAV/VNAV CAT A,B,C - 250FT	Distance from RWY12	NM	6.2	5.2	4.2	3.2	2.2	1.2	0.2
	Altitude	FT	1980	1680	1380	1090	790	490	190
	Ground Speed	KT	80	100	120	140	160	180	
	Rate of Descent	FT/MIN	400	500	610	710	810	910	

CHANGES: Amended HLDG ALT at GIDOL; Missed APCH. Editorial.