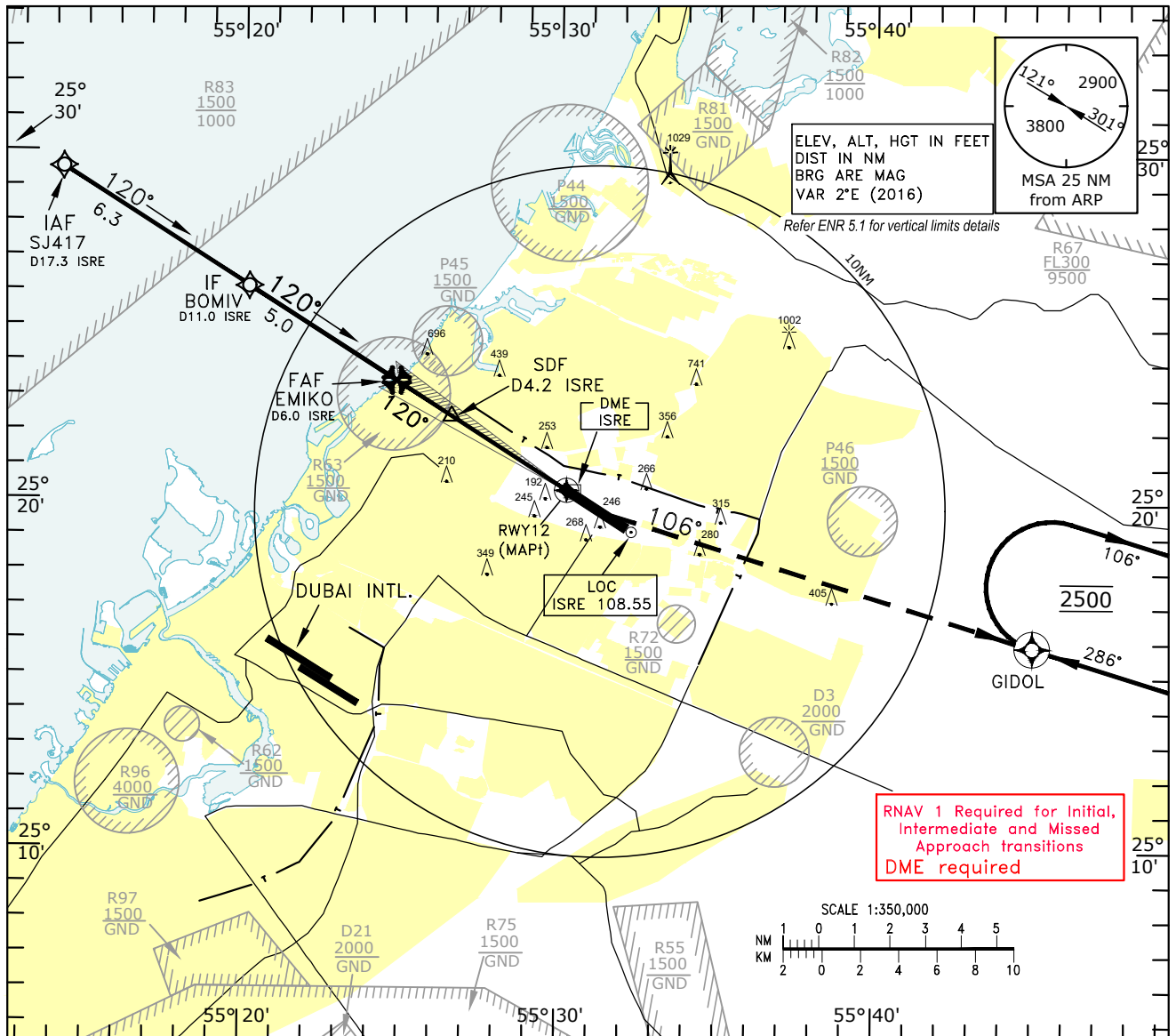


INSTRUMENT  
APPROACH  
CHART-ICAO

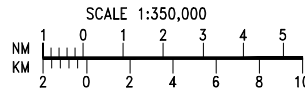
AD ELEV 119 FT  
HEIGHTS RELATED TO  
DTHR RWY12 ELEV 90 FT

ATIS 122.400  
DEP (N) 124.675  
TWR 118.600  
GND 121.875

SHARJAH/Intl.  
ILS RWY 12  
CAT A-D<sub>L</sub>

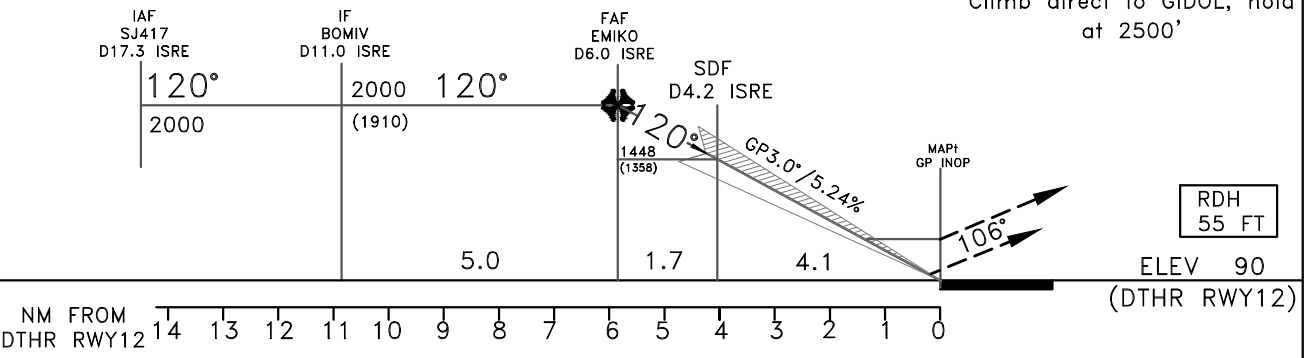


RNAV 1 Required for Initial, Intermediate and Missed Approach transitions  
DME required



TL FL150  
TA 13000

MISSED APPROACH:  
Climb direct to GIDOL, hold at 2500'



OCA (H)		A	B	C	D	DL			
Straight - in Approach	ILS CAT I ①	247 (157)	260 (170)	268 (178)	278 (188)	278 (188)			
	GP INOP	400 (310)							
Circling		N/A							
① Minimum DH CAT I A,B,C,D,DL - 200FT		Distance from ISRE	NM	6.0	5.0	4.0	3.0	2.0	1.0
		Altitude	FT	1990	1670	1350	1030	710	390
		Ground Speed	KT	80	100	120	140	160	180
		Rate of Descent	FT/MIN	430	540	650	760	870	980

CHANGES: Editorial.