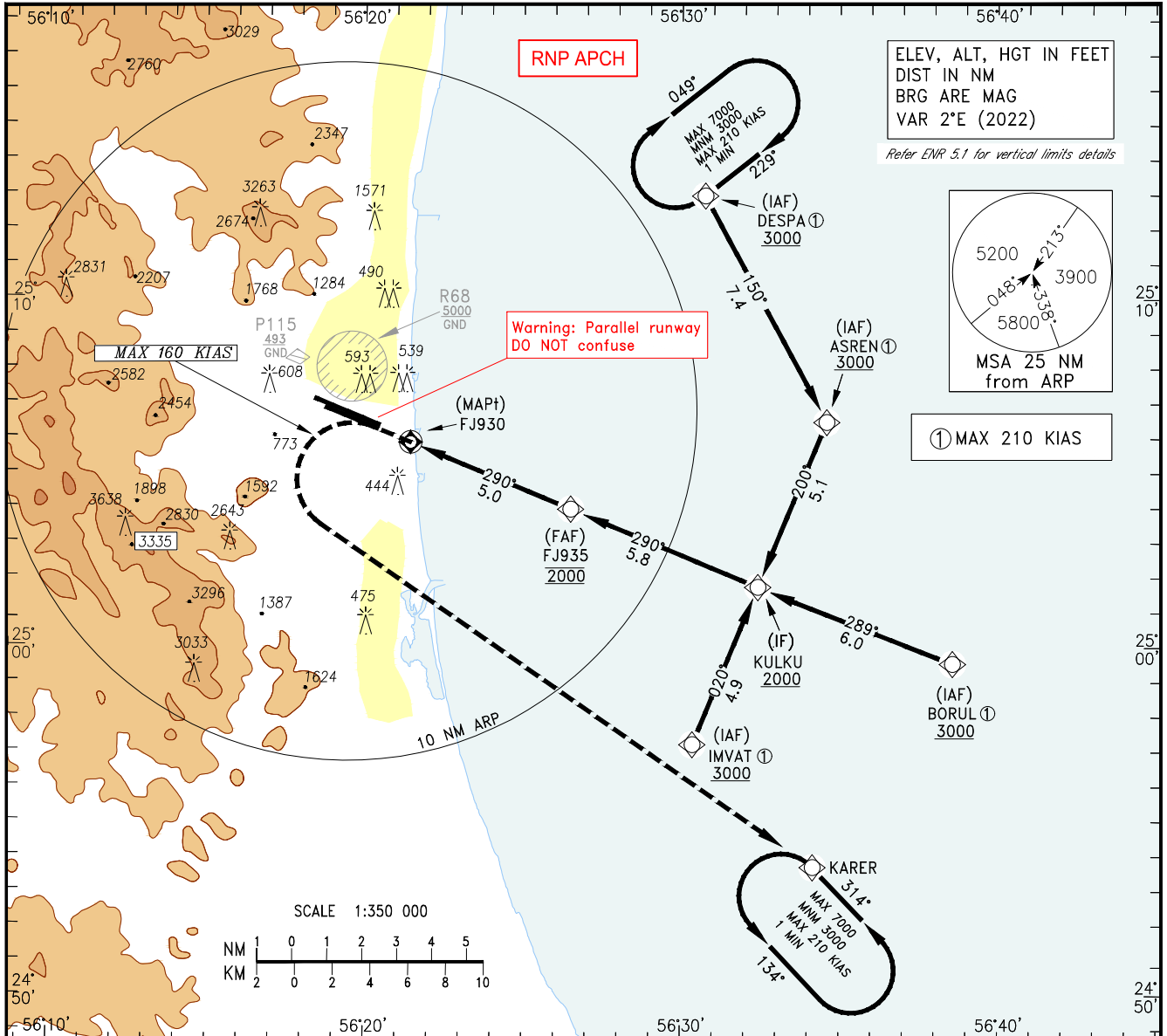


INSTRUMENT AERODROME ELEV 153 FT
 APPROACH HEIGHTS RELATED TO
 CHART-ICAO THR RWY 29L ELEV 48 FT

ATIS 126.650
 APP/APS 129.400
 TWR 124.600
 GND 119.450

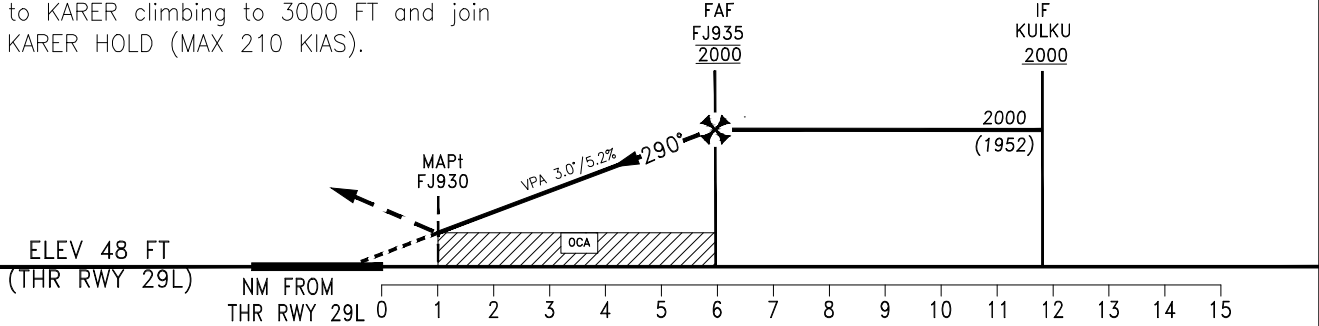
FUJAIRAH / Intl.
 RNP Y RWY 29L
 CAT A - C



TL FL150
 TA 13000

Missed Approach Climb Gradient (MACG)	Ground Speed	KTS	90	120	140	160	180	200	250
	2.5%	FT/MIN	230	310	360	410	460	510	640
	5.0%	FT/MIN	460	610	710	820	920	1020	1270

MISSED APPROACH:
 On MAPt turn LEFT (MAX 160 KIAS) direct to KARER climbing to 3000 FT and join KARER HOLD (MAX 210 KIAS).



Straight-in Approach	OCA(H)	A	B	C
	LNAV (2.5% MACG)	580(532)	1050(1002)	1240(1192)
	LNAV (5.0% MACG) ①	580(532)		740(692)
Circling		N/A		

① If unable to maintain a 5.0% missed approach climb gradient, use LNAV 2.5% OCAs.	Not Authorized	Distance from THR 29L	NM	1	2	3	4	5	6
		Altitude	FT	-	740	1050	1370	1690	-
		Ground Speed	KTS	80	100	120	140	160	180
		Rate of Descent (5.24%)	FT/MIN	425	531	637	743	849	955

CHANGES: Amended COM FAC.