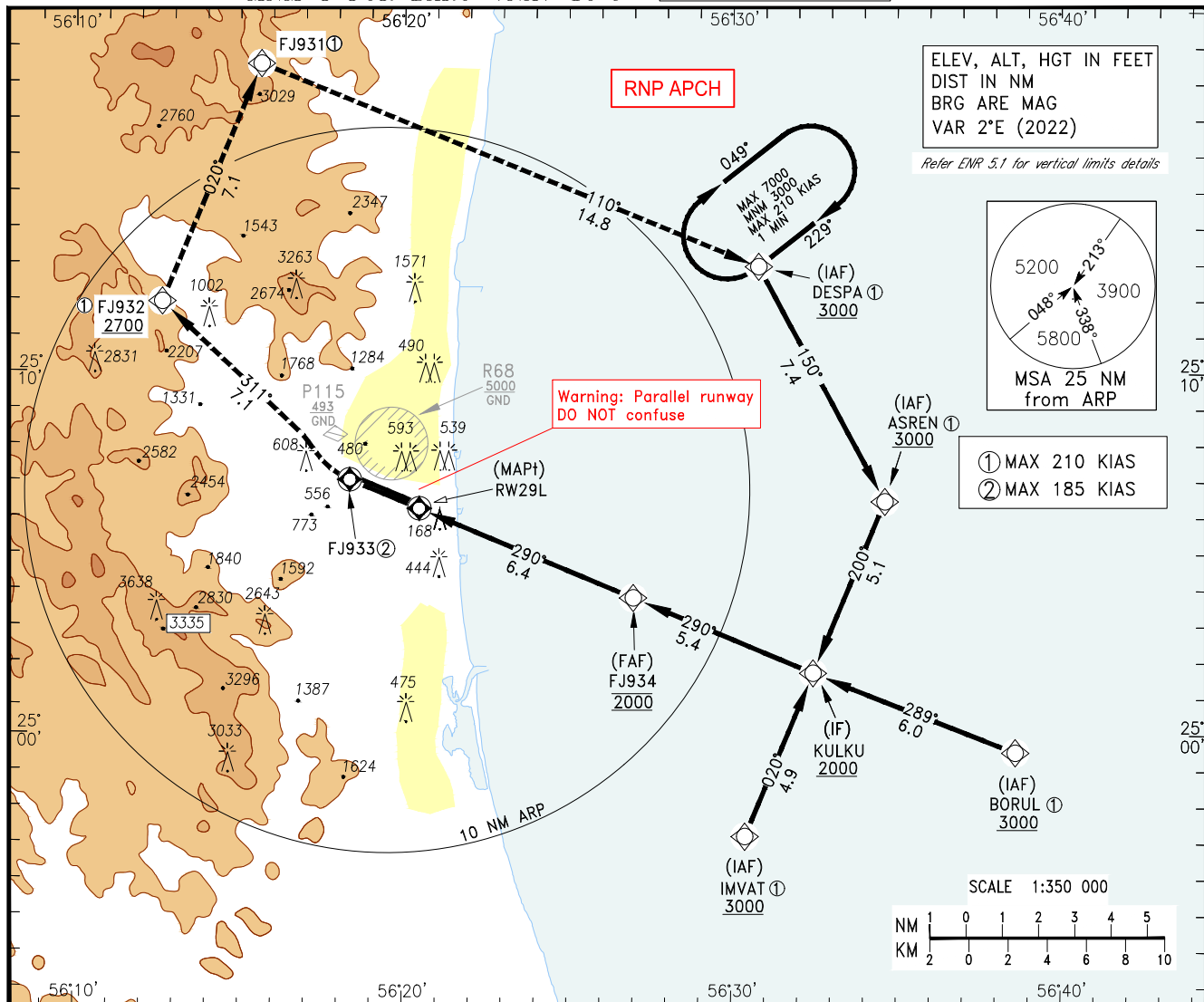


INSTRUMENT APPROACH CHART-ICAO
AERODROME ELEV 153 FT
HEIGHTS RELATED TO THR RWY 29L ELEV 48 FT
MNM T FOR BARO-VNAV 10°C

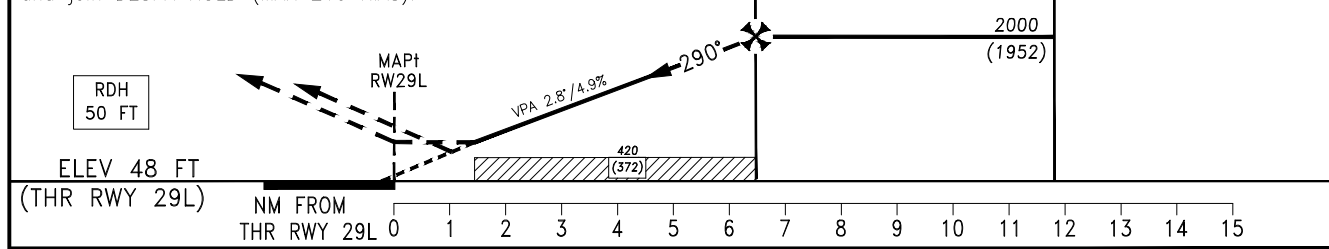
ATIS 126.650
 APP/APS 129.400
 TWR 124.600
 GND 119.450

FUJAIRAH / Intl.
RNP Z RWY 29L
CAT A - D_L



Missed Approach Climb Gradient (MACG)	Ground Speed	KTS	90	120	140	160	180	200	250
	2.5%	FT/MIN	230	310	360	410	460	510	640
	5.0%	FT/MIN	460	610	710	820	920	1020	1270

MISSED APPROACH:
 Climb direct to FJ933 (MAX 185 KIAS), to FJ932 at or above 2700 FT, to FJ931, then turn RIGHT to DESPA climbing 4000 FT and join DESPA HOLD (MAX 210 KIAS).



Straight-in Approach	OCA(H)	A	B	C	D	D _L
	LNAV/VNAV (2.5% MACG)	1090(1042)	1110(1062)	1170(1122)	1200(1152)	
LNAV/VNAV (5.0% MACG) ①	480(432)		510(462)	710(662)		
LNAV (2.5% MACG)	1470(1422)	1520(1472)	1580(1532)	1600(1552)		
LNAV (5.0% MACG) ①	730(682)	780(732)	830(782)	870(822)		

Circling N/A

① If unable to maintain a 5.0% missed approach climb gradient, use LNAV or LNAV/VNAV 2.5% OCAs.	Not Authorized	Distance from THR 29L	NM	1	2	3	4	5	6
		Altitude	FT	-	-	990	1290	1580	1880
		Ground Speed	KTS	80	100	120	140	160	180
		Rate of Descent (4.89%)	FT/MIN	393	495	594	693	792	990