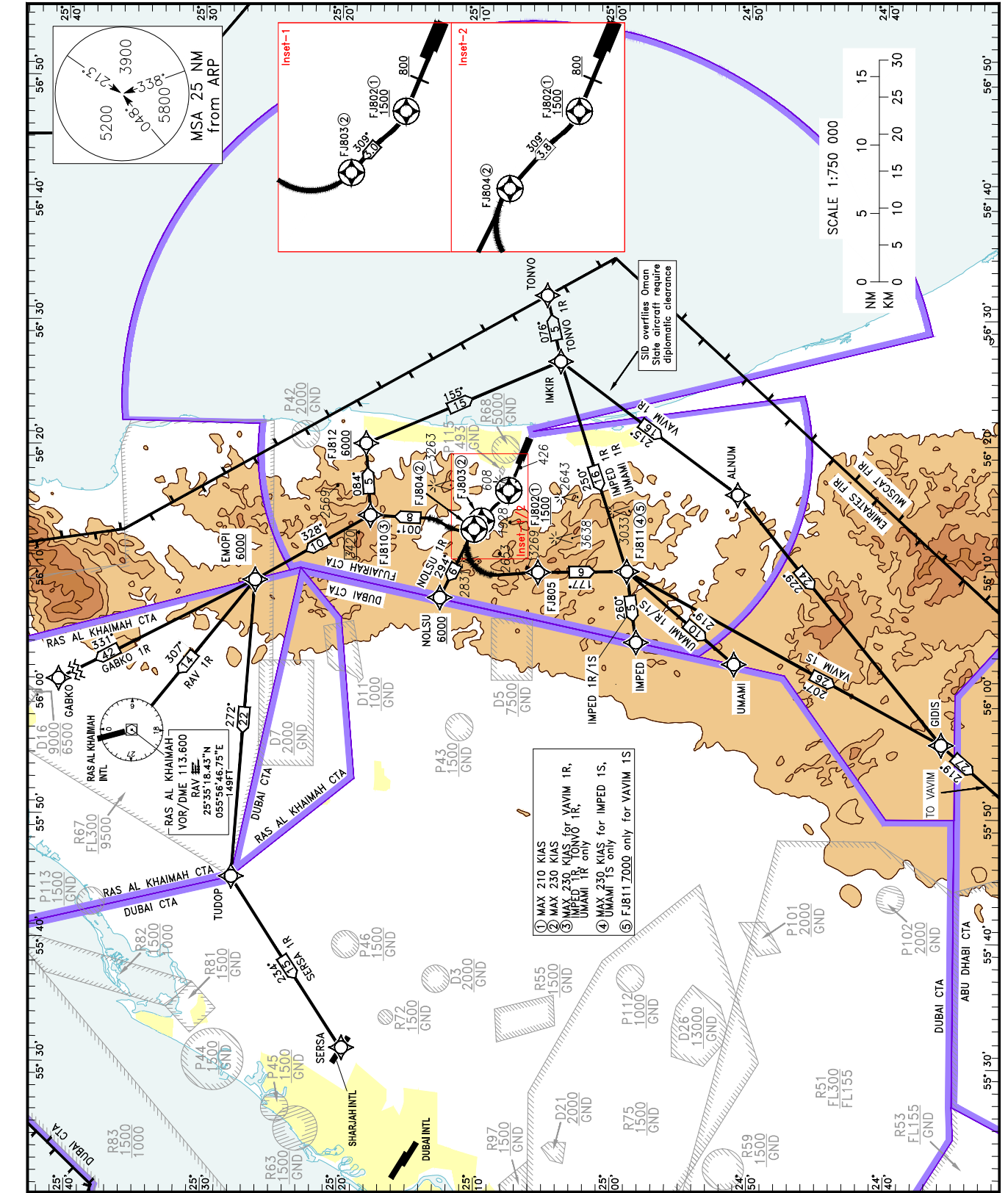


STANDARD DEPARTURE CHART - AD ELEV 153 FT  
INSTRUMENT (SID) - ICAO

FUJAIRAH/INTL  
RNAV 1 RWY 29L

GABKO 1R, IMPED 1R/1S, NOLSU 1R, RAV 1R, SERSA 1R, TONVO 1R, UMAMI 1R/1S, VAVIM 1R/1S



CHANGES: Amended COM FAC.

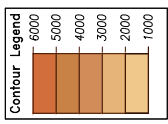
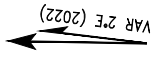
EMIRATES_ACC 124.850/125.375
ATIS 126.650
TWR 124.600
APP/APS 129.400

FOR ROUTE DESCRIPTION  
SEE OMFJ AD 2.22

TRANSITION ALTITUDE  
13000 FT

BEARINGS ARE MAGNETIC  
ELEV, ALT, HGT IN FEET

Refer ENR 5.1 for vertical limits details



NOTES

Do not climb above ATC cleared level.

RESTRICTIONS

TONVO 1R climb to 8000 FT only  
On DEP for IMPED 1R, IMPED 1S, NOLSU 1R, RAV 1R, UMAMI 1R, UMAMI 1S climb to 6000 FT and for VAVIM 1R, VAVIM 1S, GABKO 1R, SERSA 1R climb to 7000 FT.

All DEP further climb when instructed by ATC.

MAX 250 KIAS below 8000 FT.

SERSA 1R, GABKO 1R, RAV 1R, IMPED 1R, UMAMI 1R, TONVO 1R, VAVIM 1R: Minimum gradient is 10.6% (645 FT per NM) until 1200 FT, then 6.7% (408 FT per NM) up to 3500 FT, then 5% (300 FT per NM) up to the SID termination altitude.

NOLSU 1R, VAVIM 1S, UMAMI 1S, IMPED 1S: Minimum climb gradient is 10.6% (645 FT per NM) until 1200 FT, then 7.6% (462 FT per NM) up to 3500 FT, then 5% (300 FT per NM) up to the SID termination altitude.

If unable to comply with minimum Climb Gradient, advise ATC prior to startup.