

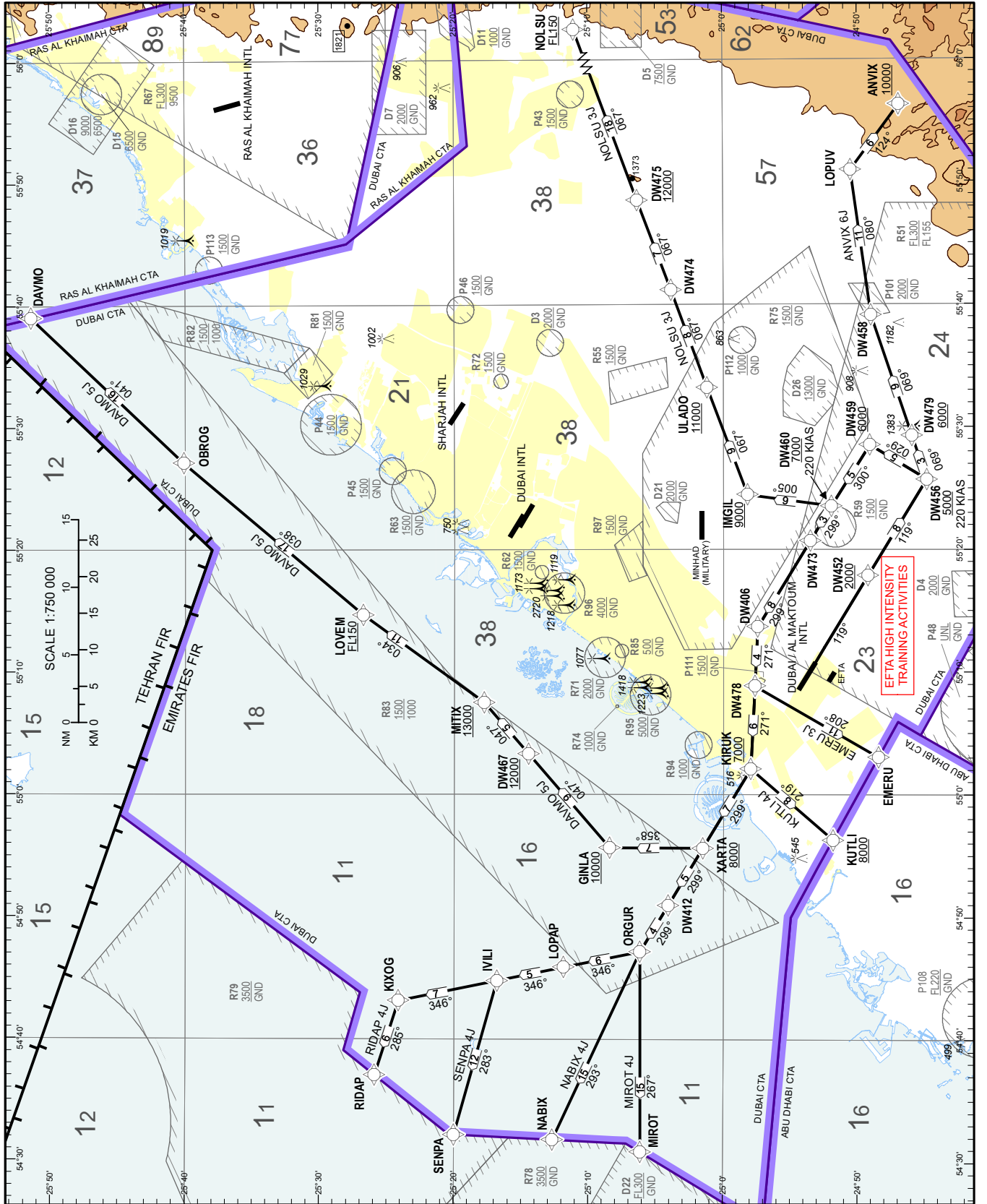
STANDARD DEPARTURE CHART - INSTRUMENT (SID) - ICAO

AD ELEV 171 FT

DUBAI / AL MAKTOUM INTL

RNAV 1 SID RWY 12

ANVIX 6J, DAVMO 5J, EMERU 3J, KUTLI 4J, MIROT 4J, NABIX 4J, NOLSU 3J, RIDAP 4J, SENPA 4J

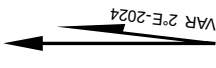


CHANGES: Amended Restrictions.

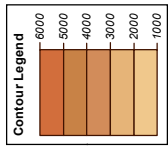
AL MAKTOUM INTL	126.475	DEP
AL MAKTOUM RDR	124.025	PRI
DUBAI DEP N	124.675	PRI
DUBAI DEP S	121.023	PRI
AL MAKTOUM TWR	118.625	PRI
AL MAKTOUM GND	118.375	PRI

FOR ROUTE DESCRIPTION  
SEE OMD WAD 2.22

TRANSITION ALTITUDE  
13000 FT



DIST IN NM  
BEARINGS ARE MAGNETIC  
ELEV, ALT, HGT IN FEET  
SPEEDS ARE MAXIMUM  
Refer ENR 5.1 for vertical limits details



NOTES  
Do not climb above ATC cleared level.

RESTRICTIONS  
RNAV 1 (GNSS) REQUIRED  
MAX 250 KIAS below 10000 FT  
25° angle of bank or at rate of 3° per second required on all turns  
MNM (ATC) required climb gradient 5.0% to 8000 FT (300 FT per NM)  
ATC instructions must be followed immediately.

CAUTION: INDEPENDENT HIGH INTENSITY CIRCUIT TRAINING TRAFFIC SOUTH OF THE AIRFIELD