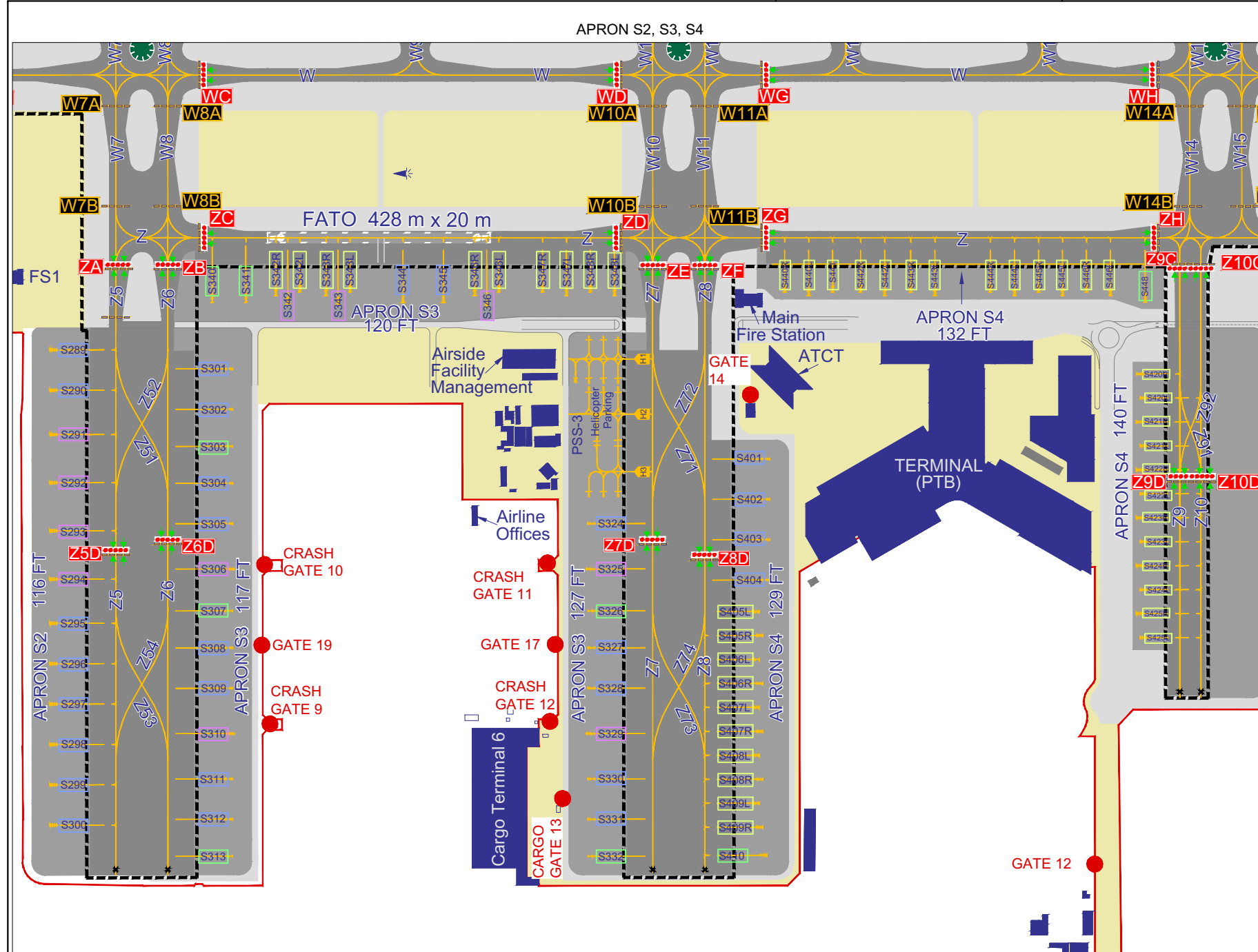


ARP 245506N 0551032E
 AD ELEV 171 FT



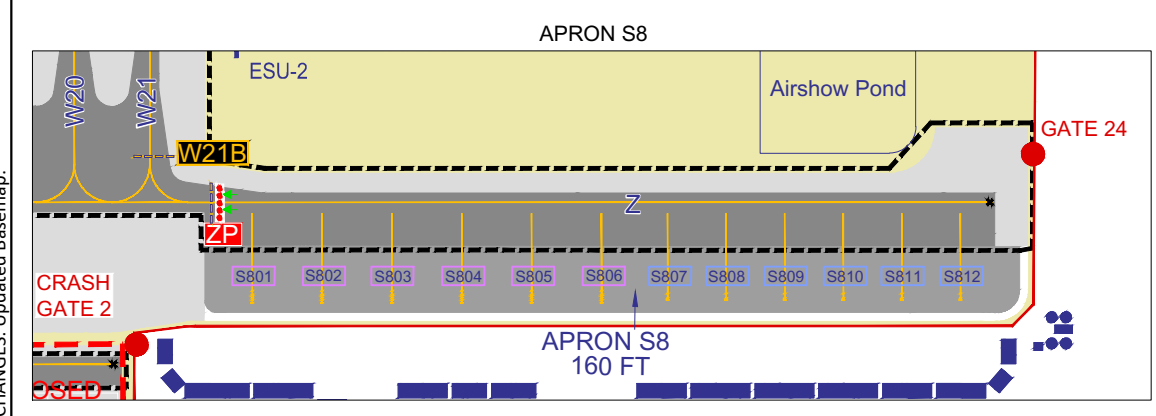
APRON S3			
STAND	LATITUDE	LONGITUDE	ELEV (FT)
S301	245339.85N	0550853.98E	117.3
S302	245337.70N	0550852.55E	117.3
S303	245335.73N	0550851.22E	117.3
S304	245333.75N	0550849.93E	117.3
S305	245331.60N	0550848.49E	117.3
S306	245329.13N	0550846.98E	117.3
S307	245326.95N	0550845.38E	117.3
S308	245324.97N	0550844.09E	117.3
S309	245322.82N	0550842.66E	117.3
S310	245320.35N	0550841.14E	117.3
S311	245317.98N	0550839.44E	117.3
S312	245315.83N	0550838.01E	117.3
S313	245313.86N	0550836.68E	117.3
S324	245320.11N	0550909.26E	127.8
S325	245317.74N	0550907.56E	127.8
S326	245315.44N	0550906.18E	127.7
S327	245313.48N	0550904.86E	127.7
S328	245311.33N	0550903.42E	127.8
S329	245308.96N	0550901.72E	127.8
S330	245306.49N	0550900.21E	127.6
S331	245304.34N	0550898.78E	127.8
S332	245302.36N	0550897.48E	127.7
S340	245344.07N	0550855.15E	116.8
S341	245342.98N	0550857.12E	117.5
S342	245341.53N	0550859.50E	118.3
S342R	245341.78N	0550900.63E	118.2
S342L	245342.36N	0550859.10E	117.9
S343	245339.90N	0550902.44E	119.3
S343L	245340.15N	0550903.57E	119.2
S343R	245340.73N	0550902.04E	118.8
S344	245337.88N	0550906.30E	120.4
S345	245336.58N	0550908.66E	121.2
S346	245334.91N	0550911.02E	122.3
S346L	245335.34N	0550912.26E	122.0
S346R	245335.92N	0550910.73E	121.6
S347L	245332.95N	0550916.10E	123.4
S347R	245333.92N	0550914.82E	122.8
S348L	245331.40N	0550918.90E	124.2
S348R	245332.37N	0550917.63E	123.7
H1	245328.93N	0550917.55E	126.4
H2	245329.40N	0550916.70E	126.6
H3	245329.87N	0550915.84E	127.0
H4	245328.26N	0550913.71E	128.1
H5	245327.84N	0550914.48E	127.8
H6	245327.37N	0550915.34E	127.2
H7	245326.89N	0550916.19E	126.8
H8	245326.14N	0550915.70E	126.8
H9	245326.62N	0550914.84E	127.3
H10	245327.09N	0550914.00E	127.7
H11	245324.22N	0550912.73E	127.7
H12	245323.58N	0550913.99E	126.8
H13	245324.00N	0550912.58E	127.7
H14	245323.27N	0550913.79E	126.8
H15	245321.79N	0550910.47E	127.7
H16	245321.32N	0550911.32E	127.2
H17	245320.85N	0550912.18E	126.8

APRON S2			
STAND	LATITUDE	LONGITUDE	ELEV (FT)
S289	245346.78N	0550843.96E	114.7
S290	245344.63N	0550842.53E	116.2
S291	245342.27N	0550840.96E	116.5
S292	245339.70N	0550839.25E	116.4
S293	245337.13N	0550837.54E	116.4
S294	245334.56N	0550835.83E	116.5
S295	245332.19N	0550834.26E	116.4
S296	245330.04N	0550832.83E	116.5
S297	245327.89N	0550831.40E	116.3
S298	245325.73N	0550829.97E	116.4
S299	245323.58N	0550828.54E	116.5
S300	245321.43N	0550827.10E	116.5

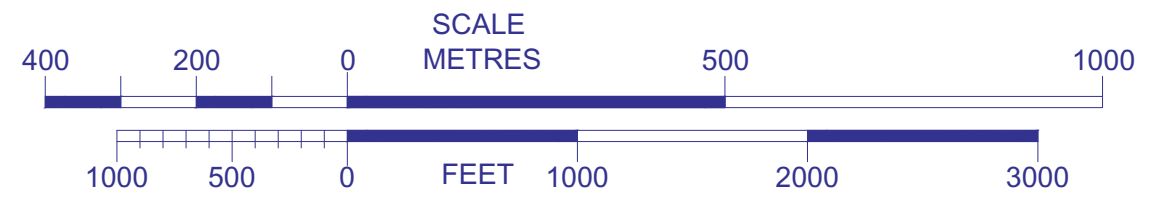
APRON S4			
STAND	LATITUDE	LONGITUDE	ELEV (FT)
S401	245317.67N	0550922.19E	129.5
S402	245315.52N	0550920.76E	129.4
S403	245313.37N	0550919.33E	129.4
S404	245311.21N	0550917.89E	129.4
S405L	245309.87N	0550916.17E	129.2
S405R	245308.48N	0550915.53E	129.3
S406L	245307.32N	0550914.46E	129.1
S406R	245305.92N	0550913.83E	129.3
S407L	245304.76N	0550912.76E	129.2
S407R	245303.36N	0550912.13E	129.3
S408L	245302.20N	0550911.06E	129.2
S408R	245300.81N	0550909.43E	129.3
S409L	245259.65N	0550909.37E	129.1
S409R	245258.25N	0550908.73E	129.3
S410	245256.62N	0550907.98E	129.3
S420L	245308.95N	0550946.01E	138.8
S420R	245310.34N	0550946.65E	138.2
S421L	245306.39N	0550944.31E	140.1
S421R	245307.78N	0550944.95E	139.6
S422L	245303.83N	0550942.61E	141.6
S422R	245305.23N	0550943.25E	141.0
S423L	245301.28N	0550940.91E	141.7
S423R	245302.67N	0550941.55E	141.9
S424L	245258.72N	0550939.21E	141.7
S424R	245300.12N	0550939.85E	141.8
S425L	245256.16N	0550937.51E	141.7
S425R	245257.56N	0550938.15E	141.8
S440L	245325.12N	0550930.26E	127.9
S440R	245326.09N	0550928.99E	127.4
S441	245324.54N	0550931.79E	128.2
S442L	245322.66N	0550934.71E	129.3
S442R	245323.64N	0550933.42E	128.8
S443L	245321.03N	0550937.65E	130.3
S443R	245322.01N	0550936.36E	129.7
S444L	245318.45N	0550942.30E	131.9
S444R	245319.43N	0550941.01E	131.3
S445L	245316.90N	0550945.10E	133.5
S445R	245317.87N	0550943.83E	132.3
S446L	245315.35N	0550947.91E	135.7
S446R	245316.32N	0550946.63E	134.4
S448	245313.88N	0550949.71E	137.3

APRON S8			
STAND	LATITUDE	LONGITUDE	ELEV (FT)
S801	245246.79N	0551038.04E	161.8
S802	245245.23N	0551040.86E	161.0
S803	245243.67N	0551043.67E	160.2
S804	245242.11N	0551046.49E	159.5
S805	245240.55N	0551049.31E	158.7
S806	245238.99N	0551052.13E	157.9
S807	245237.62N	0551054.86E	157.1
S808	245236.31N	0551057.22E	156.4
S809	245235.01N	0551059.58E	155.8
S810	245233.70N	0551101.94E	155.3
S811	245232.39N	0551104.30E	156.0
S812	245231.09N	0551106.66E	157.3

APRON DATA		
DESCRIPTION	SURFACE	STRENGTH (Stands)
APRON S2	Concrete	PCR 910/R/A/W/T (S289 - S300)
APRON S3	Concrete	PCR 910/R/A/W/T (S301 - S313) PCR 910/R/A/W/T (S324 - S332) PCR 910/R/A/W/T (S340 - S348L) PCR 910/R/A/W/T (H1 - H3)
APRON S4	Concrete	PCR 910/R/A/W/T (S401 - S410) PCR 910/R/A/W/T (S420R - S425L) PCR 910/R/A/W/T (S440R - S448)
APRON S8	Concrete	PCR 910/R/A/W/T (S801 - S812)



LEGEND	
LGTD WDI	
Buildings	
IHP	
IHP Designator (Full Stopbar)	
IHP Designator (Yellow Lights)	
IHP Stopbar	
Traffic Direction	
AD Boundary	
Airside/Landside Gate	
Stand CODE C	
Stand CODE D	
Stand CODE E	
Stand CODE F	
ATC Service Boundary	



For ATS Communication facilities refer to OMDW-AD-2-21A

CHANGES: Updated Basemap.