

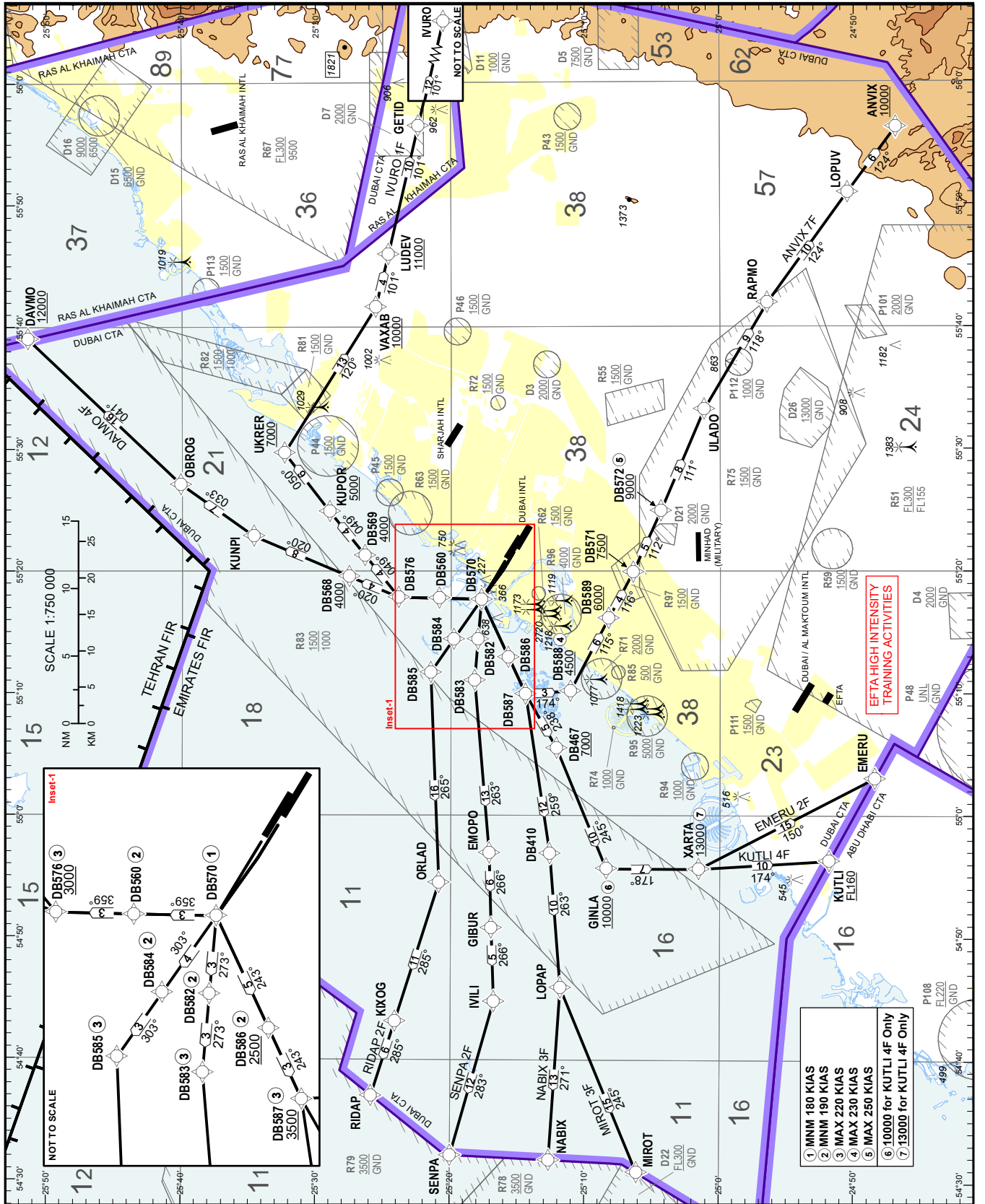
STANDARD DEPARTURE CHART-  
INSTRUMENT (SID) - ICAO

AD ELEV 62 FT

DUBAI / INTL

RNAV 1 SID RWY 30L/R

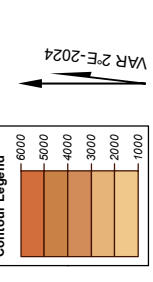
ANVIX 7F, DAVMO 4F, EMERU 2F, IVURO 1F, KUTLI 4F, MIROT 3F, NABIX 3F, RIDAP 2F, SENPA 2F



CHANGES: Added OBST 366.

DUBAI AIRPORT	131.700	DEP
AL MAKTUUM RDR	124.025	PRI
DUBAI DEP N	124.675	PRI
DUBAI DEP S	121.025	PRI
DUBAI TWR N	118.750	PRI
DUBAI TWR S	119.550	PRI
DUBAI GND	118.350	PRI/GMC-1
DUBAI GND	121.650	PRI/GMC-2

FOR ROUTE DESCRIPTION  
SEE OMDB AD 2.22  
TRANSITION ALTITUDE  
13000 FT



DIST IN NM  
BEARINGS ARE MAGNETIC  
ELEV, ALT, HGT IN FEET  
Refer ENR 5.1 for vertical limits details

NOTES  
Do not climb above ATC cleared level.  
See UAE AIP OMDB AD 2.22.4 for SID requirements

RESTRICTIONS  
RNAV 1 (GNSS) REQUIRED  
MAX 250 KIAS below 10000 FT  
25° angle of bank or at rate of 3° per second required on all turns  
MNM (ATC) required climb gradient 5.0% to 8000 FT (300 FT per NM)  
MNM (ATC) required climb gradient 7.0% to 6000 FT (425 FT per NM) for KUTLI 4F and EMERU 2F.  
On DEP climb to 4000 FT only. Further climb when instructed by DUBAI DEPARTURES  
ATC instructions must be followed immediately.

ANVIX 7F, DAVMO 4F, EMERU 2F, IVURO 1F, KUTLI 4F, MIROT 3F, NABIX 3F, SENPA 2F, MNM obstacle climb gradient to 1000 FT: RWY 30L: 4.2% (255 FT per NM), RWY 30R: 4.4% (267 FT per NM)

**Caution: DEP RWY 30R**  
Independent Parallel Arrivals on RWY 30L

CLOSE-IN OBSTACLES		DIST FM DER (M)
RWY	TYPE	ELEV (FT)
30R	AIRPORT POLE	44
30R	WATER TOWER	46
30R	STREETLIGHT POLE	35
30R	FOD MONITOR POLE	33