

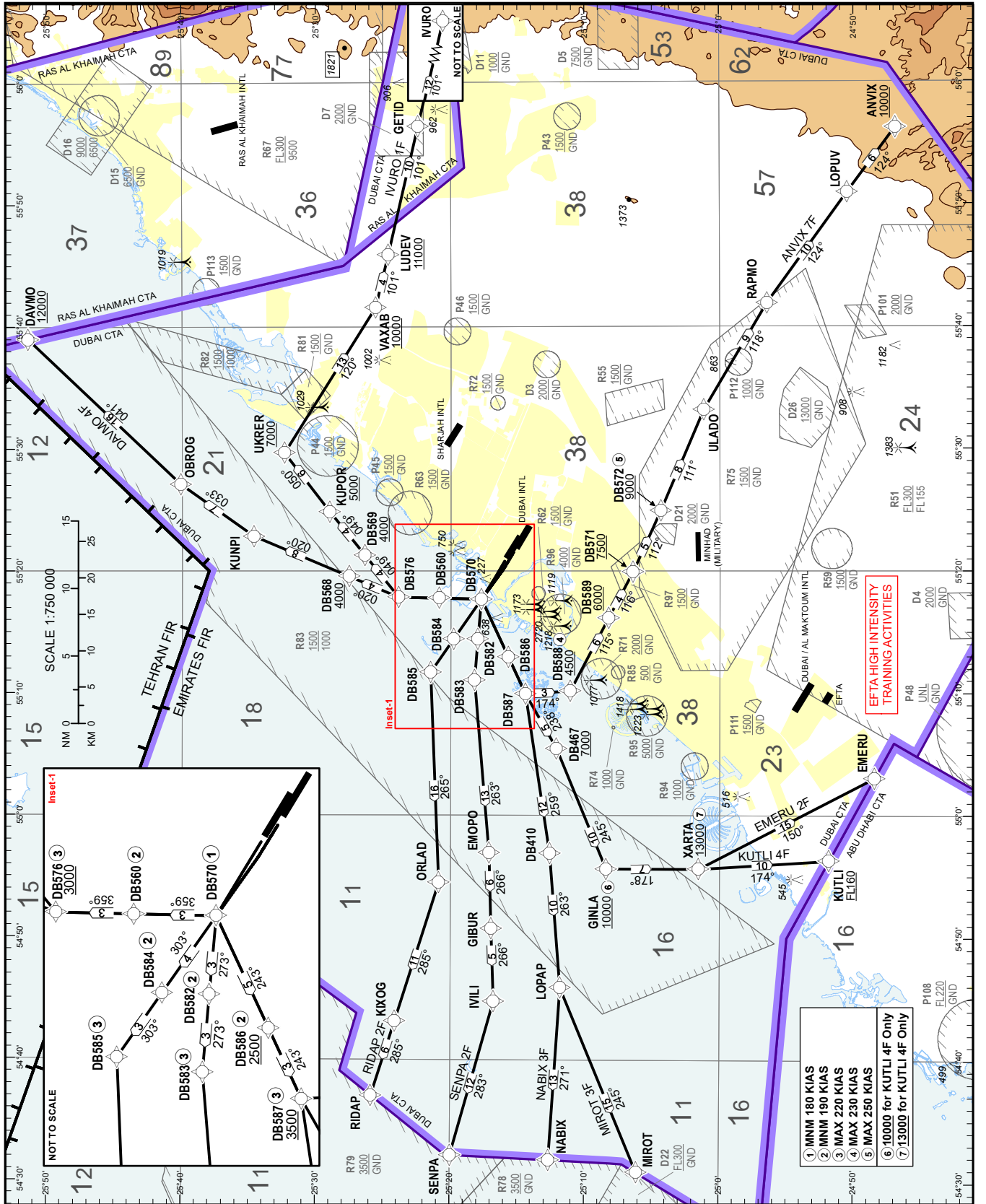
STANDARD DEPARTURE CHART-
INSTRUMENT (SID) - ICAO

AD ELEV 62 FT

DUBAI / INTL

RNAV 1 SID RWY 30L/R

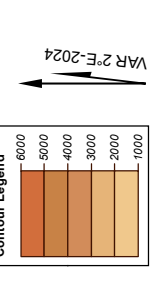
ANVIX 7F, DAVMO 4F, EMERU 2F, IVURO 1F, KUTLI 4F, MIROT 3F, NABIX 3F, RIDAP 2F, SENPA 2F



CHANGES: Amended Restrictions. Added OBST 227. Editorial.

DUBAI AIRPORT	131.700	DEP
AL MAKTUUM RDR	124.025	PRI
DUBAI DEP N	124.675	PRI
DUBAI DEP S	121.025	PRI
DUBAI TWR N	118.750	PRI
DUBAI TWR S	119.550	PRI
DUBAI GND	118.350	PRI/GMC-1
DUBAI GND	121.650	PRI/GMC-2

FOR ROUTE DESCRIPTION
SEE OMDB AD 2.22
TRANSITION ALTITUDE
13000 FT



DIST IN NM
BEARINGS ARE MAGNETIC
ELEV, ALT, HGT IN FEET
Refer ENR 5.1 for vertical limits details

NOTES
Do not climb above ATC cleared level.
See UAE AIP OMDB AD 2.22.4 for SID requirements

RESTRICTIONS
RNAV 1 (GNSS) REQUIRED
MAX 250 KIAS below 10000 FT
25° angle of bank or at rate of 3° per second required on all turns
MNM (ATC) required climb gradient 5.0% to 8000 FT (300 FT per NM)
MNM (ATC) required climb gradient 7.0% to 8000 FT (425 FT per NM) for KUTLI 4F and EMERU 2F.
On DEP climb to 4000 FT only. Further climb when instructed by DUBAI DEPARTURES
ATC instructions must be followed immediately.

ANVIX 7F, DAVMO 4F, EMERU 2F, IVURO 1F, KUTLI 4F, MIROT 3F, NABIX 3F, SENPA 2F: MNM obstacle climb gradient to 1000 FT:
RWY 30L: 4.2% (255 FT per NM)
RWY 30R: 4.4% (267 FT per NM)

Caution: DEP RWY 30R
Independent Parallel Arrivals on RWY 30L

CLOSE-IN OBSTACLES	
RWY	DIST FM DER (M)
30R	44
30R	178
30R	200
30R	35
30R	68
30R	33