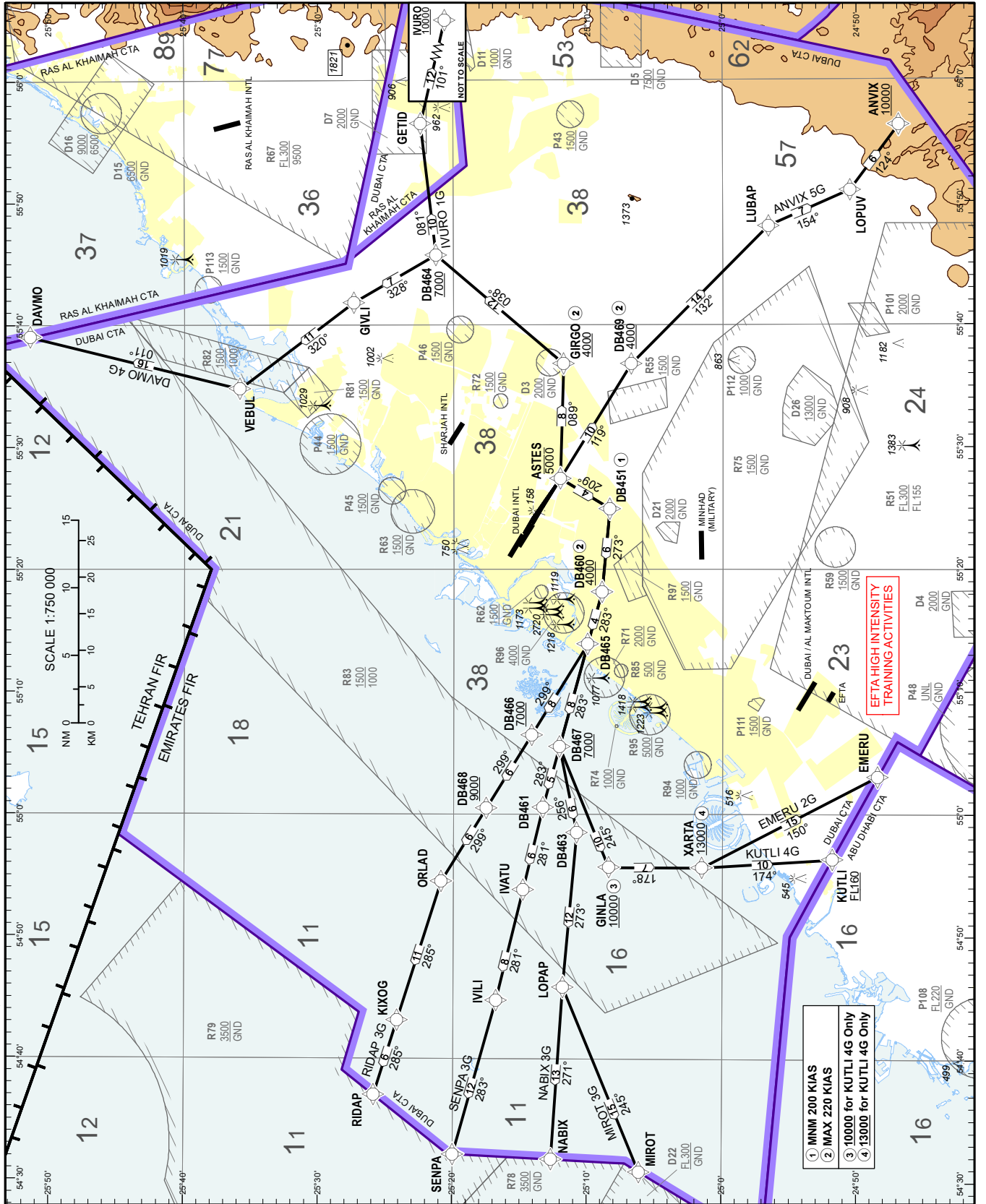


STANDARD DEPARTURE CHART- AD ELEV 62 FT
INSTRUMENT (SID) - ICAO

DUBAI / INTL
RNAV 1 SID RWY 12L/R

ANVIX 5G, DAVMO 4G, EMERU 2G, IVURO 1G, KUTLI 4G, MIROT 3G, NABIX 3G, RIDAP 3G, SENPA 3G

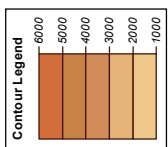


CHANGES: Amended Restrictions. Added Close-In Obstacle, OBST 158. Editorial.

DUBAI AIRPORT	131.700	DEP
AL MAKTUUM RDR	124.025	PRI
DUBAI DEP N	124.675	PRI
DUBAI DEP S	121.025	PRI
DUBAI TWR N	118.750	PRI
DUBAI TWR S	118.550	PRI
DUBAI GND	118.350	PRI GMC-1
DUBAI GND	121.650	PRI GMC-2

FOR ROUTE DESCRIPTION
SEE OMDB AD 2.22

TRANSITION ALTITUDE
13000 FT



DIST IN NM
BEARINGS ARE MAGNETIC
ELEV, ALT, HGT IN FEET
Refer ENR 5.1 for vertical limits details

NOTES
Do not climb above ATC cleared level.
See UAE AIP OMDB AD 2.22.4 for SID requirements

RESTRICTIONS
RNAV 1 (GNSS) REQUIRED
MAX 250 KIAS below 10000 FT
25° angle of bank or at rate of 3° per second required on all turns
MNM (ATC) required climb gradient 5.0% to 8000 FT (300 FT per NM)

On DEP climb to 4000 FT only. Further climb when instructed by Dubai DEPARTURES
ATC instructions must be followed immediately.

RWY 12R: EMERU 2G, KUTLI 4G, MIROT 3G, NABIX 3G, RIDAP 3G, SENPA 3G; MNM obstacle climb gradient 4.2% (255 FT per NM) to 1000 FT.

CLOSE-IN OBSTACLES	
RWY	TYPE ELEV (FT) DIST FM DER (M)
12R	POLE 156 946

Caution: DEP RWY 12R
Independent Parallel Arrivals on RWY 12L