

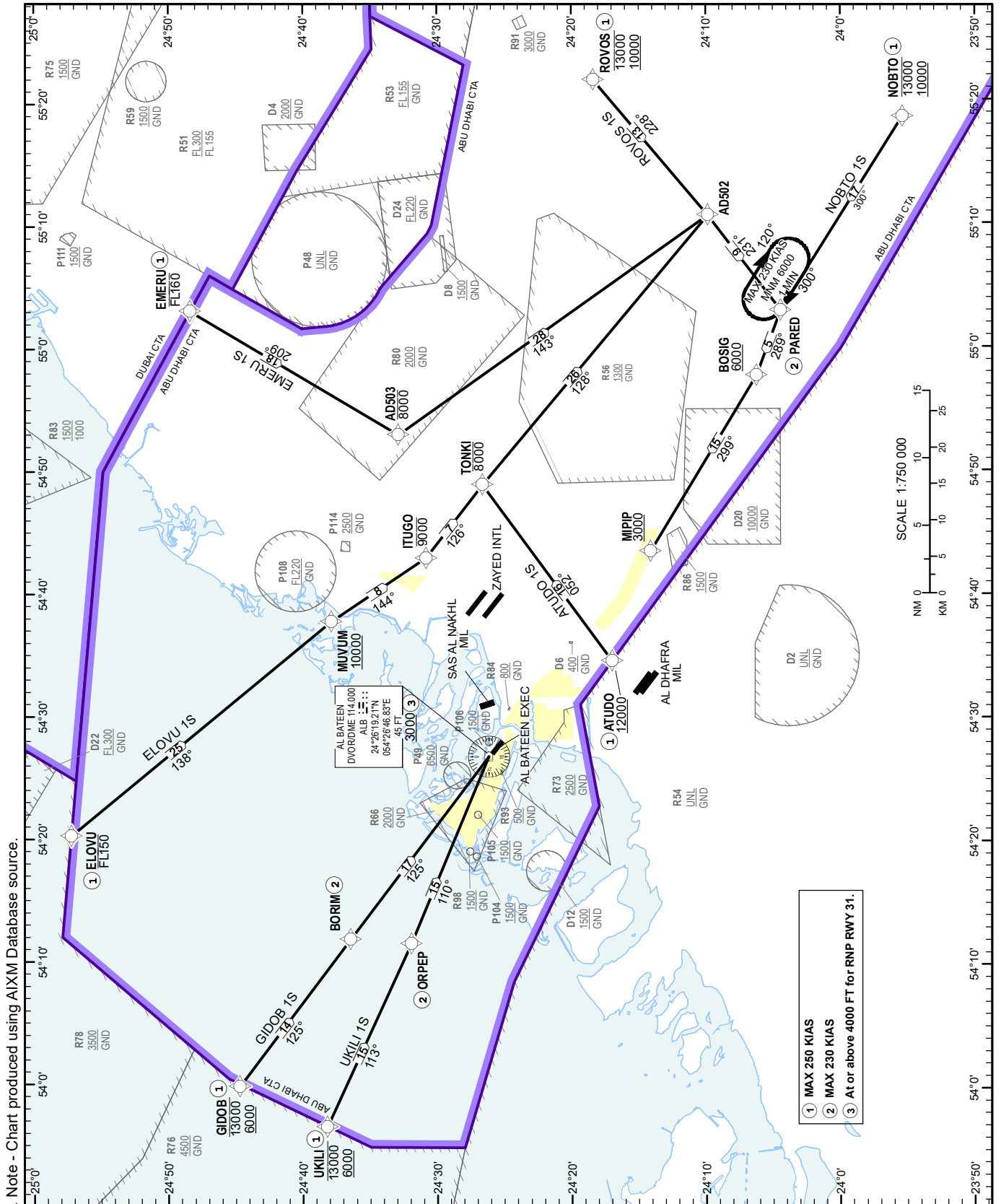
STANDARD ARRIVAL CHART-
INSTRUMENT (STAR) - ICAO

AD ELEV 18 FT

ABU DHABI / Al Bateen Executive

RNAV 1 STAR RWY 31

ATUDO 1S, ELOVU 1S, EMERU 1S, GIDOB 1S, NOBTO 1S, ROVOS 1S, UKILI 1S



CHANGES: Added D8. Editorial. Note - Chart produced using AIXM Database source.

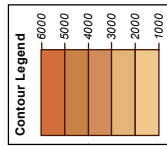
ABU DHABI RDR W	128.100	PRI
ABU DHABI RDR C	124.400	PRI
AL BATEEN TWR	119.900	PRI
AL BATEEN GND	120.375	PRI

FOR ROUTE DESCRIPTION
SEE OMAD AD 2.22.

TRANSITION ALTITUDE
13000 FT



DIST IN NM
BEARINGS ARE MAGNETIC
ELEV, ALT, HGT IN FEET
Refer ENR 5.1 for vertical limits details



NOTES
Do not descend below ATC cleared level.

RESTRICTIONS
RNAV 1 (GNSS) REQUIRED
MAX 250 KIAS below 10000 FT.

- ① MAX 250 KIAS
- ② MAX 230 KIAS
- ③ At or above 4000 FT for RNP RWY 31.

