

CHANGES: Added D8. Editorial. Note - Chart produced using AIXM Database source.

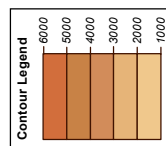
ABU DHABI RDR W	128.100	PRI
ABU DHABI RDR C	124.400	PRI
AL BATEEN TWR	119.900	PRI
AL BATEEN GND	120.375	PRI

FOR ROUTE DESCRIPTION
SEE OMAD AD 2.22.

TRANSITION ALTITUDE
13000 FT



DIST IN NM
BEARINGS ARE MAGNETIC
ELEV, ALT, HGT IN FEET
Refer ENR 5.1 for vertical limits details

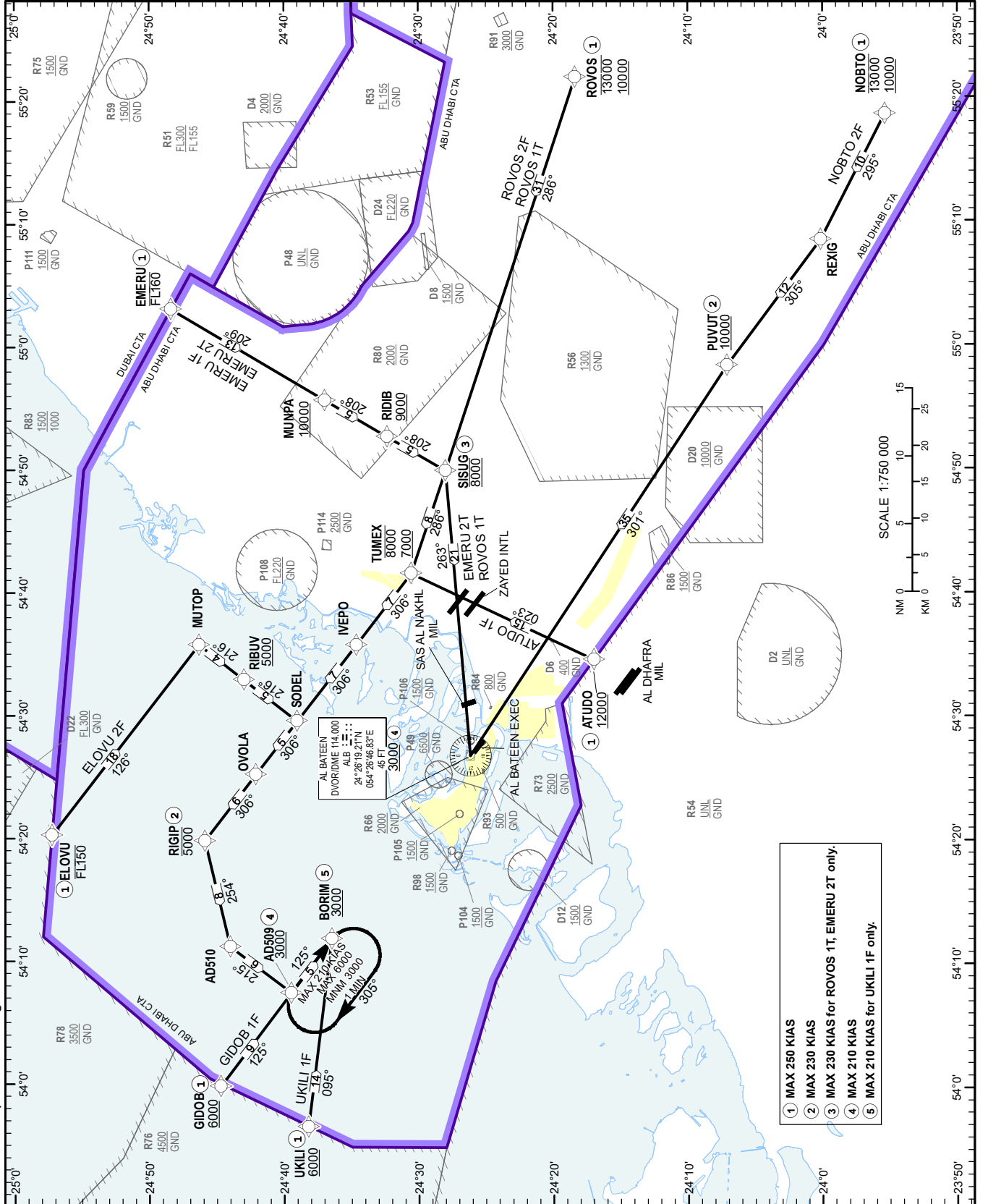
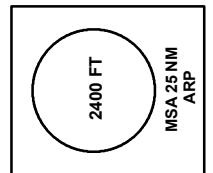


NOTES

Do not descend below ATC cleared level.

RESTRICTIONS

RNAV 1 (GNSS) REQUIRED.
MAX 250 KIAS below 10 000 FT.



- ① MAX 250 KIAS
- ② MAX 230 KIAS
- ③ MAX 230 KIAS for ROVOS 1T, EMERU 2T only.
- ④ MAX 210 KIAS
- ⑤ MAX 210 KIAS for UKILI 1F only.