

STANDARD DEPARTURE CHART-  
INSTRUMENT (SID) - ICAO

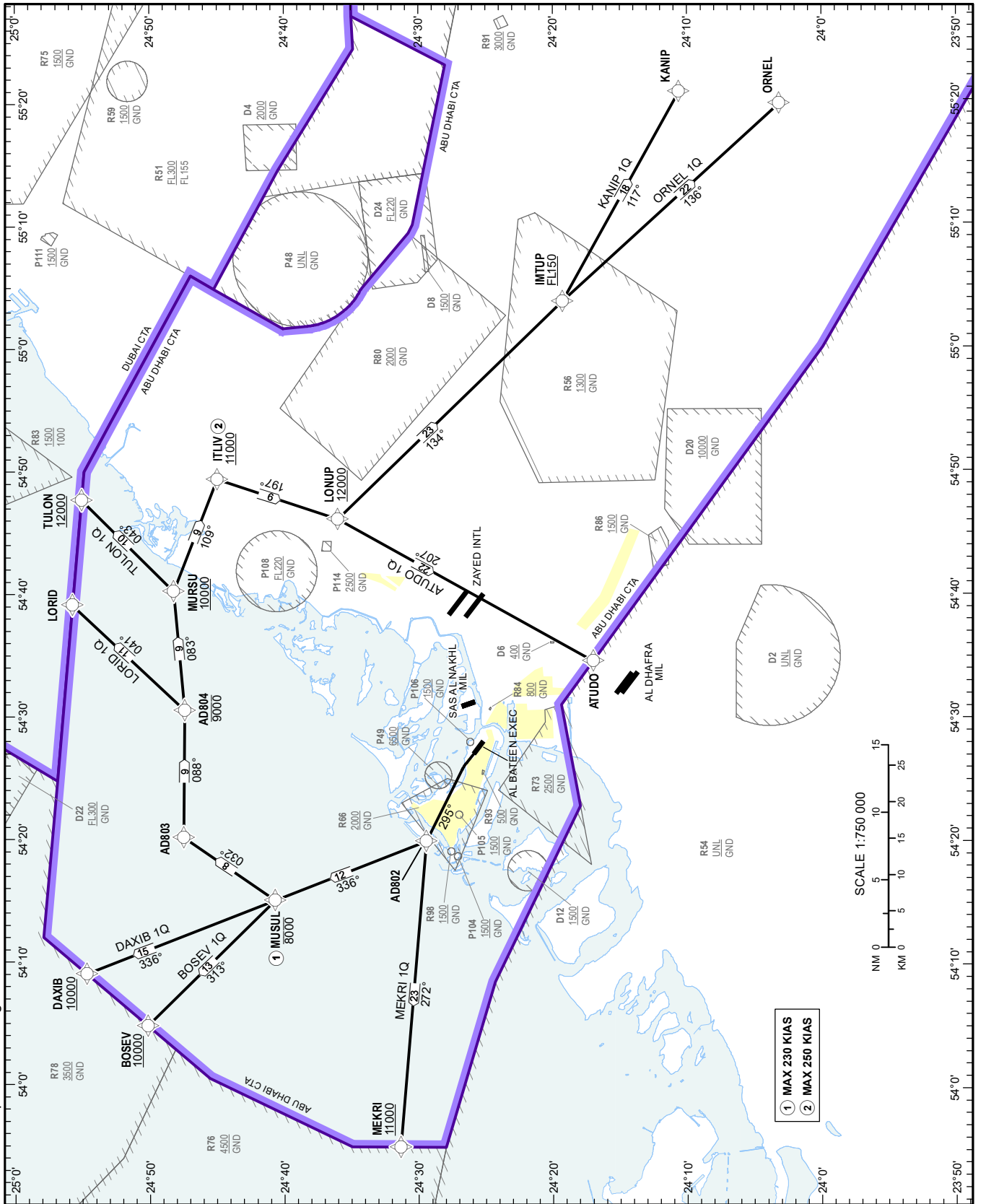
AD ELEV 18 FT

ABU DHABI / Al Bateen Executive

RNAV 1 SID RWY 31

ATUDO 1Q, BOSEV 1Q, DAXIB 1Q, KANIP 1Q, LORID 1Q, MEKRI 1Q, ORNEL 1Q, TULON 1Q

CHANGES: Added D8. Editorial. Note - Chart produced using AIXM Database source.

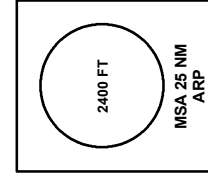
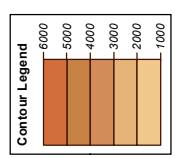


ABU DHABI RDR W	128.100	PRI
ABU DHABI RDR C	124.400	PRI
AL BATEEN TWR	119.900	PRI
AL BATEEN GND	120.375	PRI

**FOR ROUTE DESCRIPTION  
SEE OMAD AD 2.22.**

**TRANSITION ALTITUDE  
13000 FT**

DIST IN NM  
BEARINGS ARE MAGNETIC  
ELEV, ALT, HGT IN FEET  
Refer ENR 5.1 for vertical limits details



**NOTES**  
Do not climb above ATC cleared level.

**RESTRICTIONS**  
RNAV 1 (GNSS) REQUIRED.  
On DEP climb to 3000 FT only. Further climb when instructed by Abu Dhabi Radar.  
Minimum cloud base 500 FT.  
Minimum visibility 1500 M.  
MNM required climb gradient 5% to 8000 FT (300 FT per NM).  
MAX 250 KIAS below 10000 FT.  
Maintain listening watch on Tower frequency until leaving 1500 FT, then contact Abu Dhabi RADAR West on 128.100 MHz without waiting to be transferred by ATC.

