

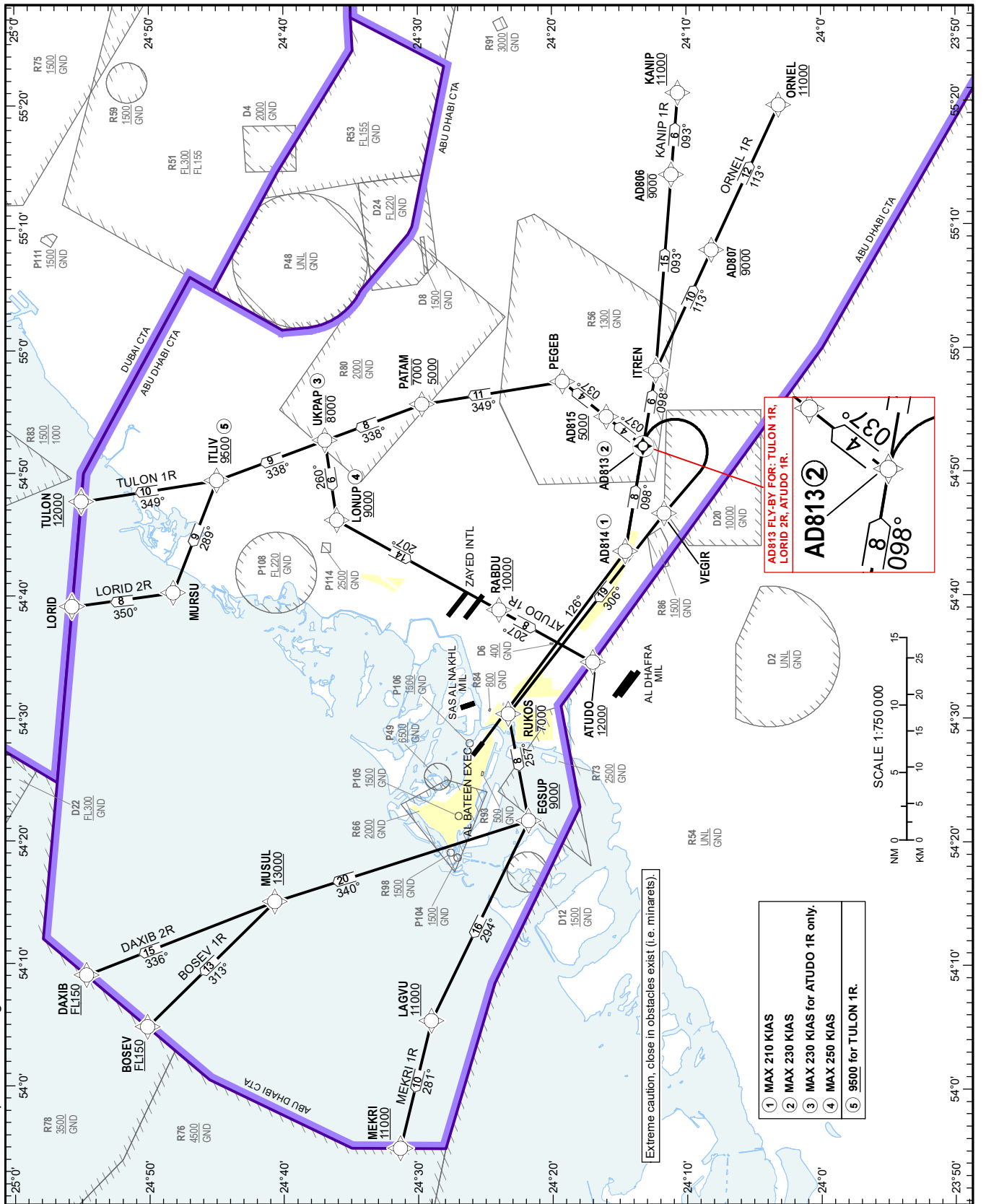
STANDARD DEPARTURE CHART-
INSTRUMENT (SID) - ICAO

AD ELEV 18 FT

ABU DHABI / Al Bateen Executive
RNAV 1 SID RWY 13

ATUDO 1R, BOSEV 1R, DAXIB 2R, KANIP 1R, LORID 2R, MEKRI 1R, ORNEL 1R, TULON 1R

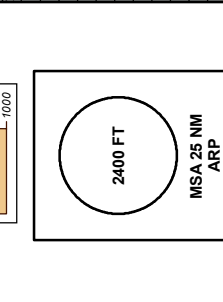
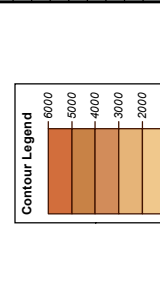
CHANGES: Added D8. Editorial. Note - Chart produced using AIXM Database source.



ABU DHABI RDR W	128.100	PRI
ABU DHABI RDR C	124.400	PRI
AL BATEEN TWR	119.900	PRI
AL BATEEN GND	120.375	PRI

FOR ROUTE DESCRIPTION
SEE OMAD AD 2.22.
TRANSITION ALTITUDE
13000 FT

DIST IN NM
BEARINGS ARE MAGNETIC
ELEV, ALT, HGT IN FEET
Refer ENR 5.1 for vertical limits details



NOTES
Do not climb above ATC cleared level.

RESTRICTIONS
RNAV 1 (GNSS) REQUIRED.
On DEP climb to 3000 FT only. Further climb when instructed by Abu Dhabi Radar.

Visual departure reference to obstacle/terrain until passing 700 FT.
Minimum cloud base 700 FT.
Minimum visibility 1500 M.
MAX 250 KIAS below 10000 FT.

Maintain listening watch on Tower frequency until leaving 1500 FT, then contact Abu Dhabi Radar Central on 124.400 MHz without waiting to be transferred by ATC.

- ① MAX 210 KIAS
- ② MAX 230 KIAS
- ③ MAX 230 KIAS for ATUDO 1R only.
- ④ MAX 250 KIAS
- ⑤ 9500 for TULON 1R.

Extreme caution, close in obstacles exist (i.e. minarets).

