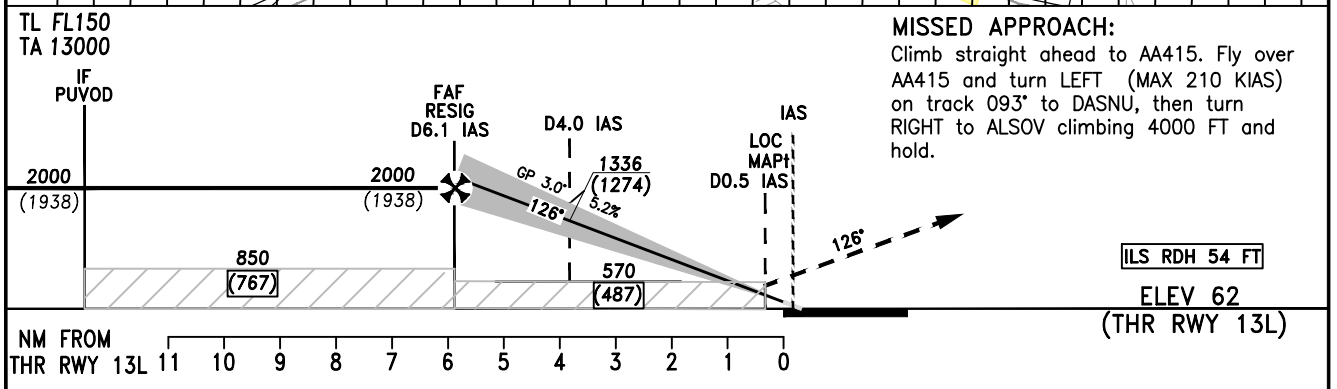
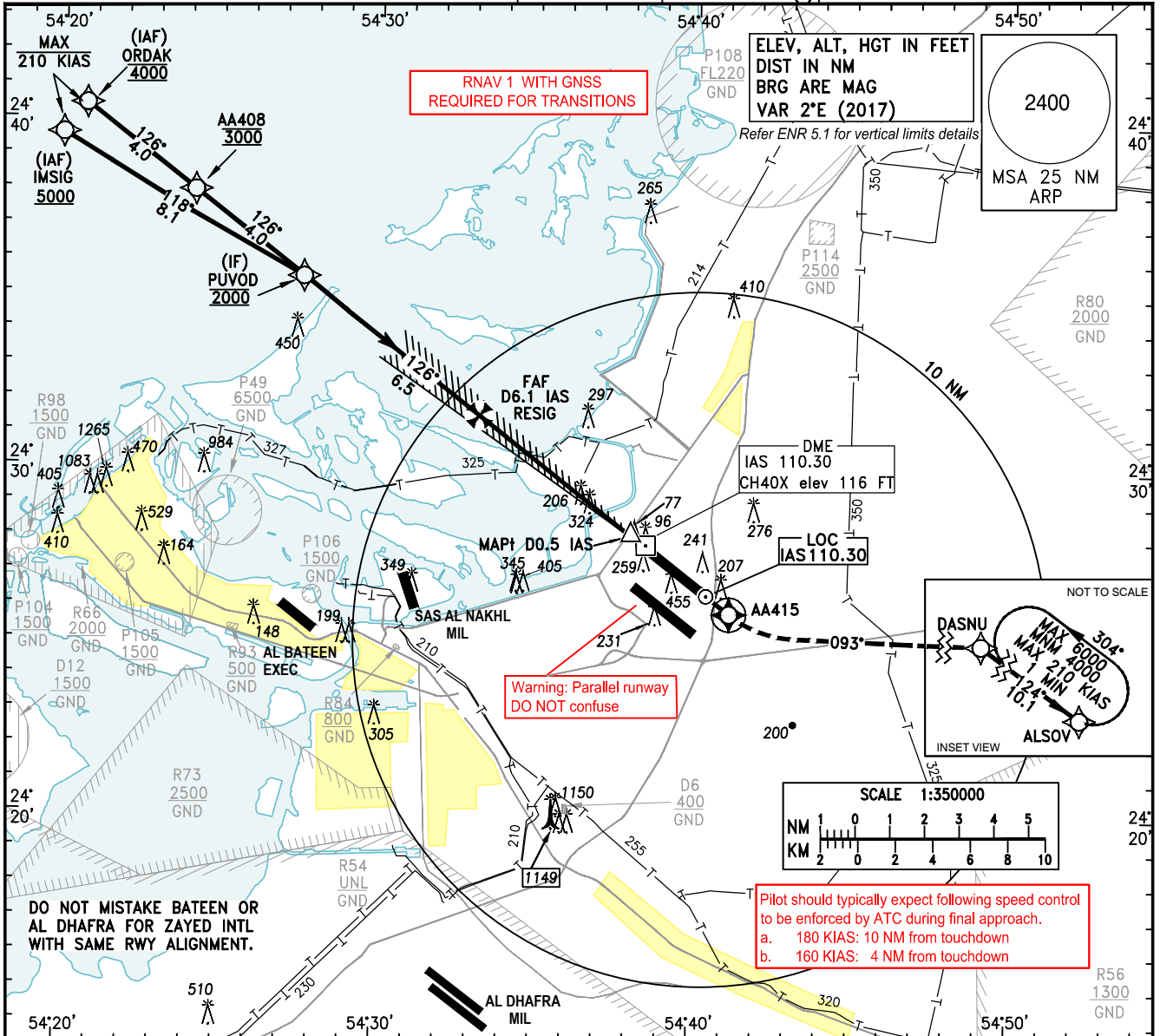


INSTRUMENT APPROACH CHART-ICAO
AD ELEV 83 FT
HEIGHTS RELATED TO THR RWY 13L ELEV 62 FT

ABU DHABI RADAR (W)	128.100	ABU DHABI RADAR (E)	133.550
ABU DHABI RADAR (C)	124.400	ABU DHABI INFO TWR	127.500
ABU DHABI DIRECTOR (S)	118.000		119.200(S)
ABU DHABI DIRECTOR (N)	118.425		118.675(N)
			123.975(S)
			121.950(N)
			120.425(C)

ABU DHABI/ZAYED INTL ILS RWY 13L
CAT A-D_L



OCA/(H)	A B C D D _L				
	ILS CAT I ①	202(140)	211(149)	221(159)	232(170)
ILS CAT II ②	110(48)	121(59)	134(72)	147(85)	149(87)
LOC	570(508)				
Circling ④	750 (667)		850 (767)		

① MNM DH CAT A, B, C, D, D _L - 200FT ② MNM DH CAT A, B, C, D, D _L - 100FT ③ ILS CAT III B AVBL - MNM RVR 50m ④ Circling not authorised SW of the runway centreline		Distance from DME IAS	NM	1	2	3	4	5	6
		Altitude	FT	380	699	1017	1336	1654	1973
		Ground Speed	KTS	80	100	120	140	160	180
		Rate of Descent (3°)	FT/MIN	425	531	637	743	849	955

NOTE

- Aircraft unable to comply with RNAV 1 requirement inform ATC on first CTC.
- DME IAS zero indication at TDZ.
- OM and MM replaced by DME IAS.

DME IAS 4.0 NM 1336 (1274)
 DME IAS 0.7 NM 285 (223)

CHANGES: Amended RDH. Editorial.