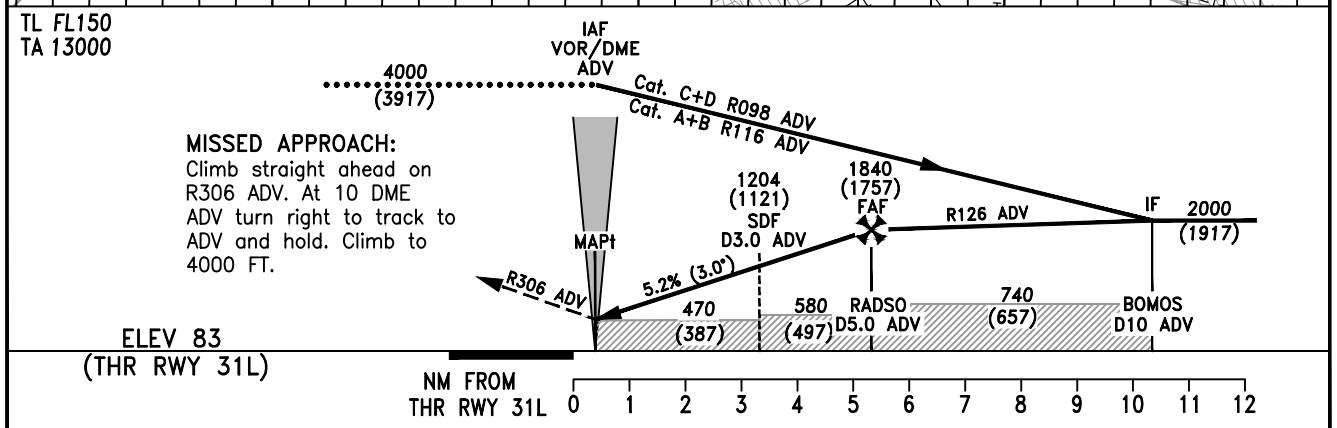
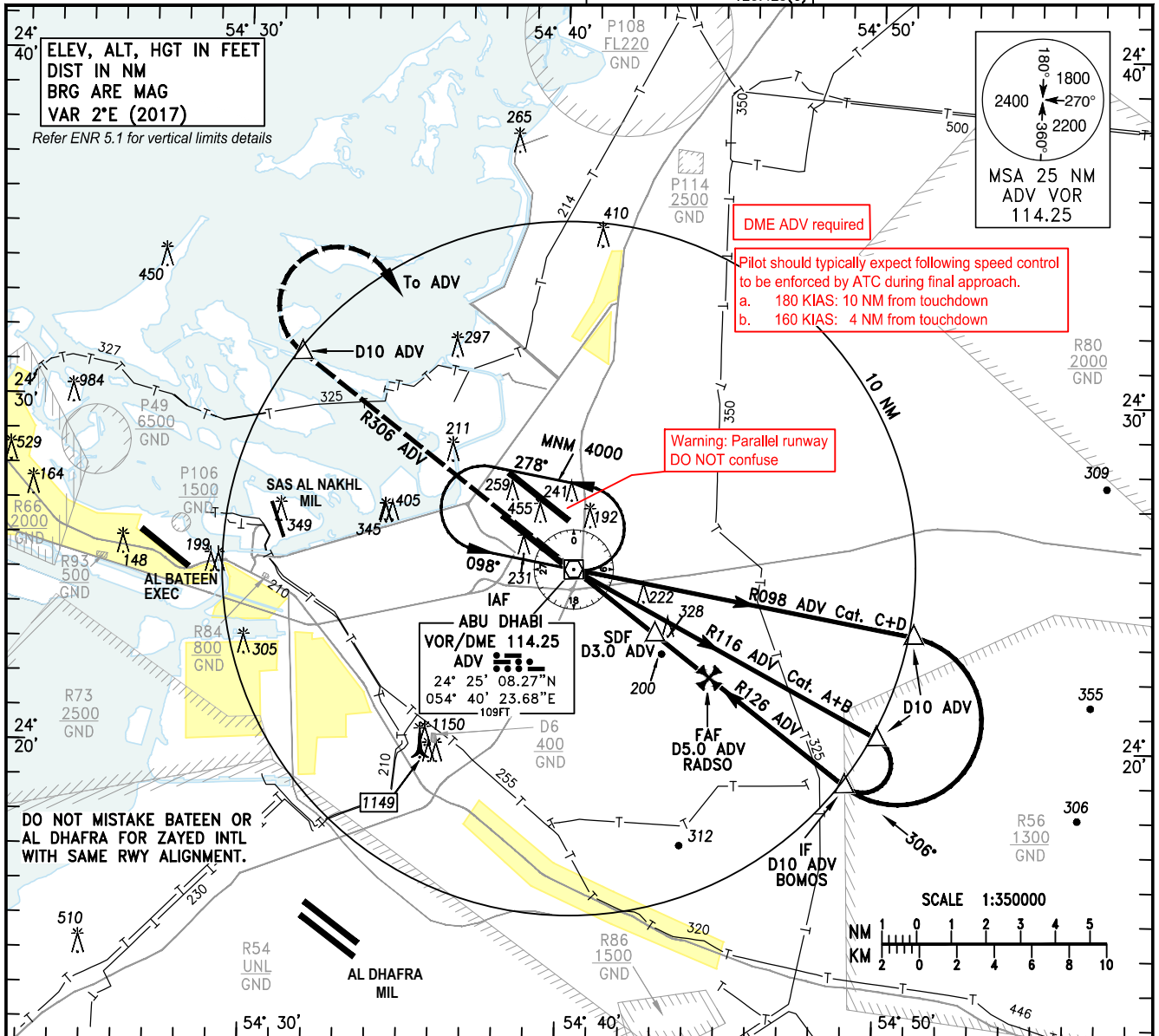


INSTRUMENT
APPROACH
CHART-ICAO

AD ELEV 83 FT
HEIGHTS RELATED TO
THR RWY 31L ELEV 83 FT

ABU DHABI RADAR (W) 128.100
ABU DHABI RADAR (C) 124.400
ABU DHABI DIRECTOR (S) 118.000
TWR 119.200(S)
118.675(N)
123.975(S)
121.950(N)
120.425(C)
GND

ABU DHABI/ZAYED INTL
VOR RWY 31L
CAT A-D



| OCA/(H) | | A | B | C | D | | | | |
|---|---------------------|-----------------------|----------|----------|----------|------|------|------|------|
| Straight-in Approach | VOR/DME | | 470(387) | | | | | | |
| | VOR/DME without SDF | | 580(497) | | | | | | |
| Circling ① | | 750(667) | 750(667) | 850(767) | 850(767) | | | | |
| ① Circling not authorised SW of runway centreline | | | | | | | | | |
| | | Distance from THR 31L | NM | 1 | 2 | 3 | 4 | 5 | 6 |
| | | Altitude | FT | 451 | 770 | 1088 | 1407 | 1725 | 2044 |
| | | Ground Speed | KTS | 80 | 100 | 120 | 140 | 160 | 180 |
| | | Rate of Descent (3°) | FT/MIN | 425 | 531 | 637 | 743 | 849 | 955 |

CHANGES: Added R86, Editorial.