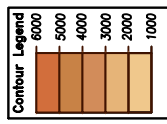


CHANGES: Added D8. Editorial.

ATIS	119.675
ABU DHABI RADAR (W)	128.100
ABU DHABI RADAR (C)	124.400
ABU DHABI DIRECTOR (S)	118.000
ABU DHABI DIRECTOR (N)	118.425
ABU DHABI RADAR (E)	133.550
ABU DHABI INFO	127.500
TWR	119.200(S) 118.675(N)
GND	123.975(S) 121.950(N) 120.425(C)

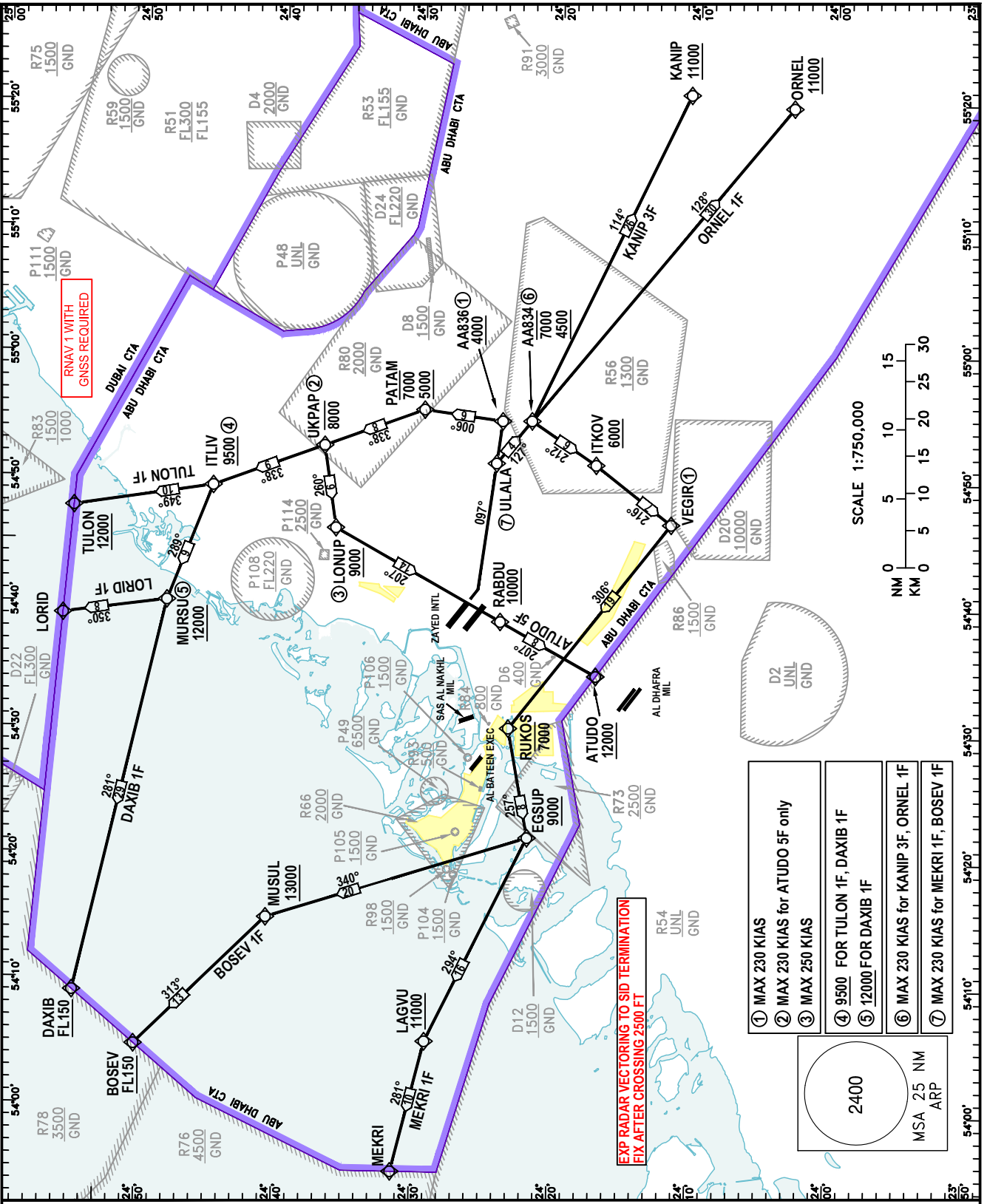
FOR ROUTE DESCRIPTION
SEE OMAA AD 2.22
TRANSITION ALTITUDE
13,000 FT

BEARINGS ARE MAGNETIC
ELEV, ALT, HGT IN FEET
Refer ENR 5.1 for vertical limits details
VAR 2E (2017)



NOTES
Do not climb above ATC cleared level.

RESTRICTIONS
On DEP climb to 4000 FT only. Further climb when instructed by Abu Dhabi RADAR
MNM required climb gradient 5% to 8,000 FT (300 FT per NM)
MAX 250 KIAS below 10,000 FT
DEP ACFT shall CTC ABU DHABI RADAR (C) on 124.400 MHz as soon as possible APSS 1000 FT unless otherwise instructed by ABU DHABI TWR.



- ① MAX 230 KIAS
- ② MAX 230 KIAS for ATUDO 5F only
- ③ MAX 250 KIAS
- ④ 9500 FOR TULON 1F, DAXIB 1F
- ⑤ 12000 FOR DAXIB 1F
- ⑥ MAX 230 KIAS for KANIP 3F, ORNEL 1F
- ⑦ MAX 230 KIAS for MEKRI 1F, BOSEV 1F

2400
MSA 25 NM
ARP

