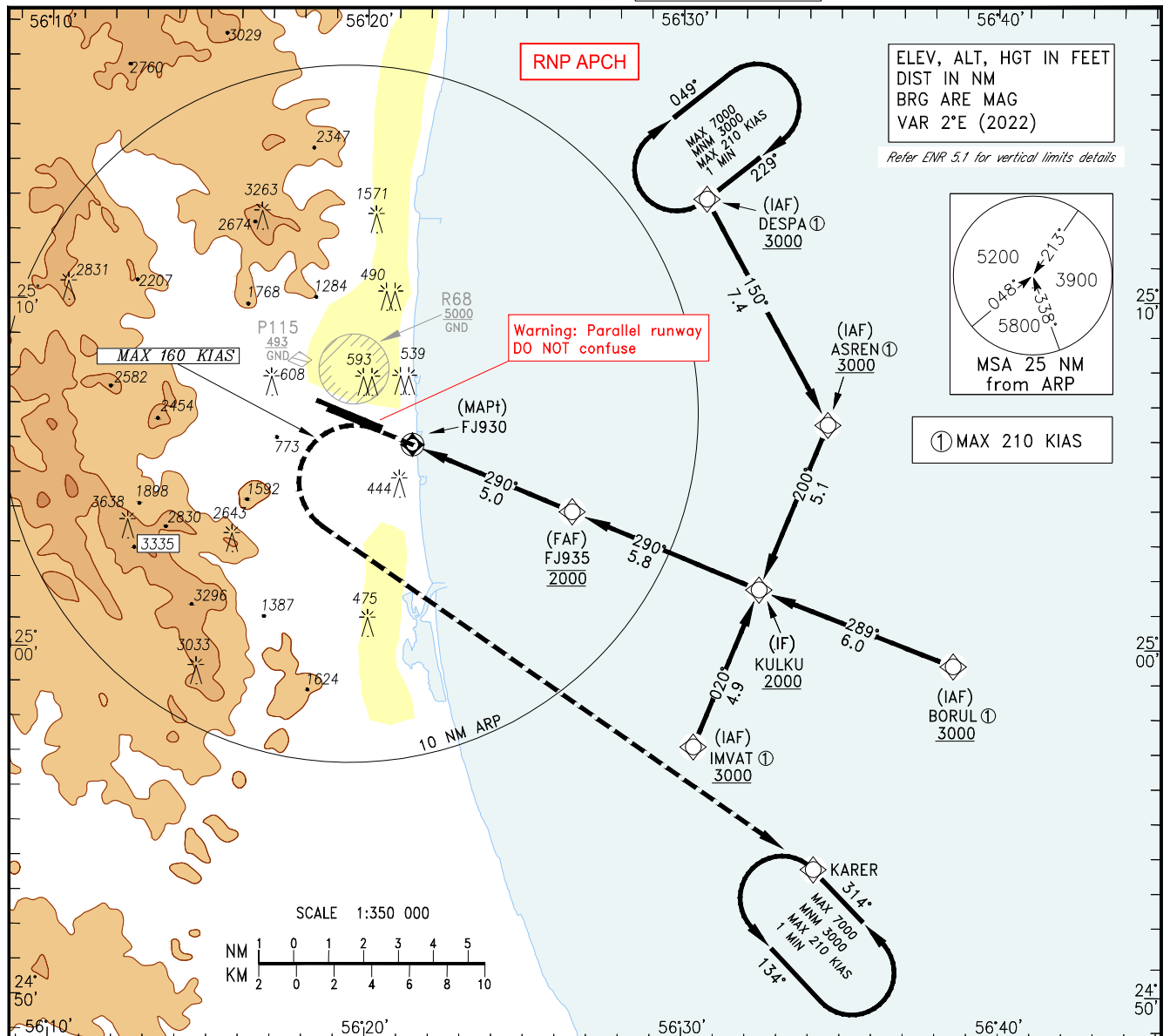


INSTRUMENT AERODROME ELEV 153 FT
APPROACH HEIGHTS RELATED TO
CHART-ICAO THR RWY 29L ELEV 48 FT

ATIS 126.650
APP 129.400
TWR 124.600
GND 119.450

FUJAIRAH / Intl.
RNP Y RWY 29L
CAT A - C



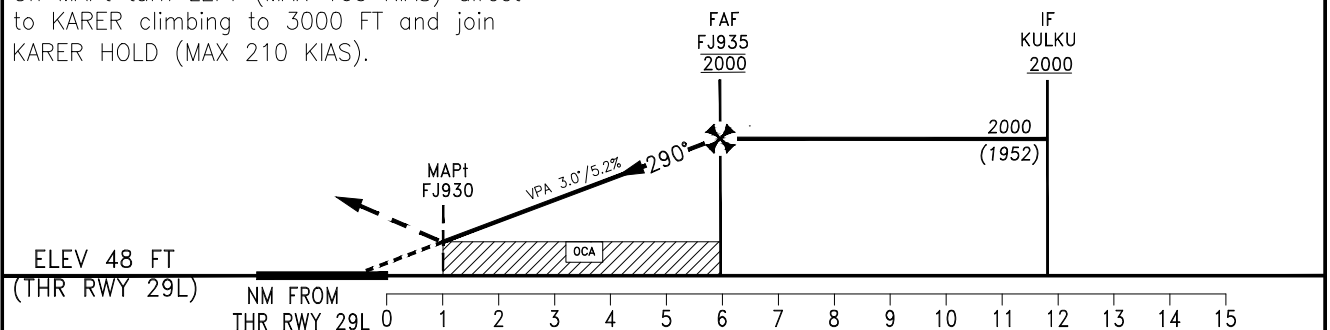
TL FL150
TA 13000

Missed Approach
Climb Gradient
(MACG)

Ground Speed	KTS	90	120	140	160	180	200	250
2.5%	FT/MIN	230	310	360	410	460	510	640
5.0%	FT/MIN	460	610	710	820	920	1020	1270

MISSED APPROACH:

On MAPt turn LEFT (MAX 160 KIAS) direct to KARER climbing to 3000 FT and join KARER HOLD (MAX 210 KIAS).



Straight-in Approach	OCA(H)	A	B	C
	LNAV (2.5% MACG)	580(532)	1050(1002)	1240(1192)
	LNAV (5.0% MACG) ①	580(532)	740(692)	
Circling		N/A		

① If unable to maintain a 5.0% missed approach climb gradient, use LNAV 2.5% OCAs.



Distance from THR 29L	NM	1	2	3	4	5	6
Altitude	FT	—	740	1050	1370	1690	—
Ground Speed	KTS	80	100	120	140	160	180
Rate of Descent (5.24%)	FT/MIN	425	531	637	743	849	955