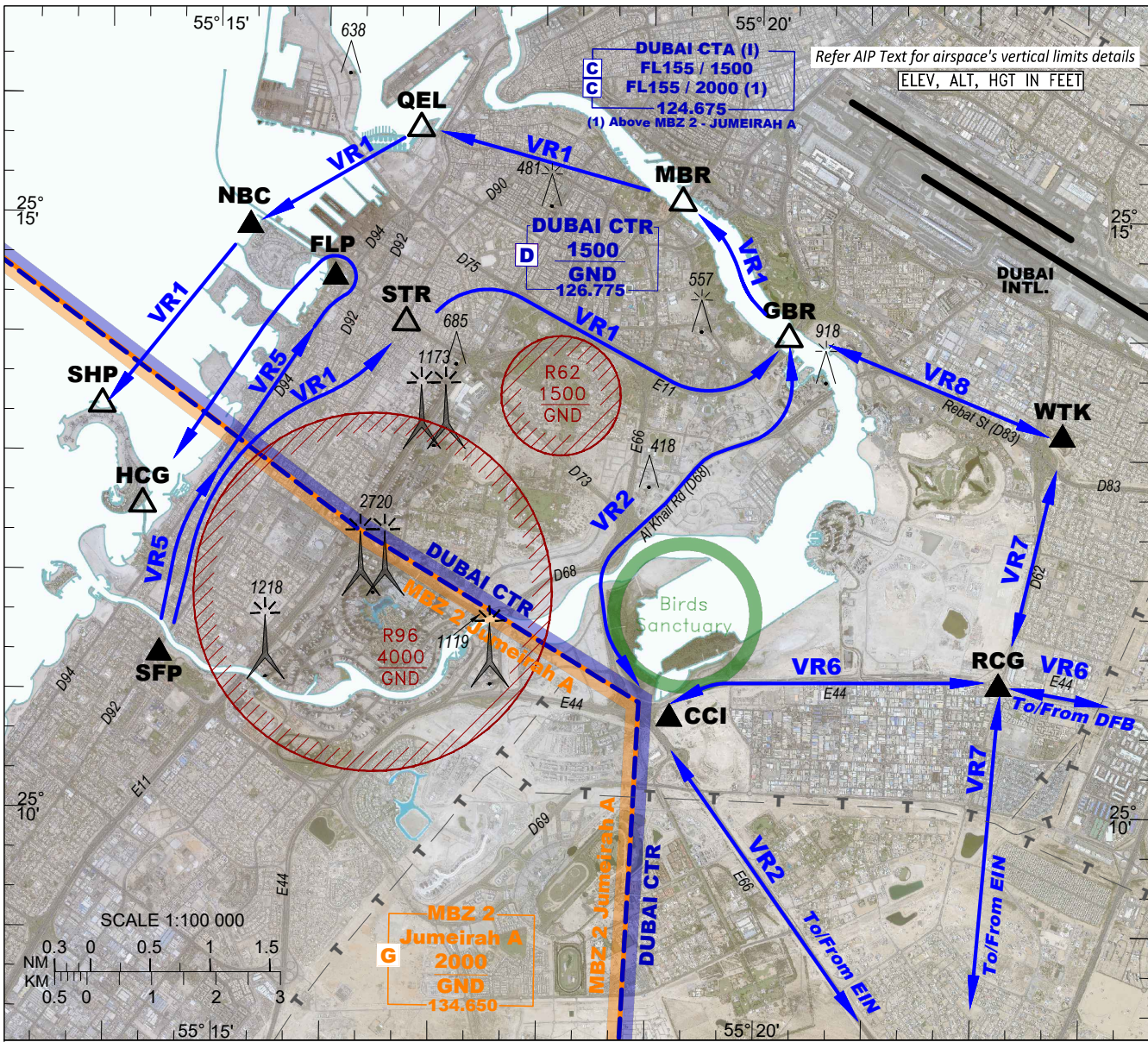


VFR CHART

DUBAI TWR 126.775
MBZ 2 134.650

DUBAI CREEK VFR ROUTES



- VFR traffic is not permitted to enter the DUBAI CTR without clearance from Dubai Tower which may instruct VFR traffic to hold outside the DUBAI CTR until further advised.
- VFR traffic operating within or transiting through the DUBAI CTR shall fly the above VFR routes, comply with specified altitude restrictions and defined VRPs.
- Military, Police, Rescue and VIP flights may request direct routing from Dubai Tower.
- Non-standard VFR routing inside DUBAI CTR is subject to prior approval from Dubai Tower.
- For SVFR clearance into the DUBAI CTR, pilots shall contact Dubai Tower inbound to Safa Park (SFP) or Country Club Intersection (CCI).
- For CTA Class G airspace definition see ENR 2.1.

VFR ROUTES:

| NAME | DESCRIPTION (1) | MAX ALT (FT) | REMARKS |
|------|---|----------------------------------|--|
| VR1 | A uni-directional route connecting SFP, STR, GBR, MBR, QEL, NBC, SHP. | 1000 1500 between NBC and SHP | Opposite direction traffic may be expected along VR1 between SHP-NBC-QEL-MBR-GBR due to seaplane operations arriving and departing to/from Creek and Port Rashid water runways Caution: Drone activity on segments STR-GBR, MBR-QEL and QEL-NBC from GND to 400 FT AGL. Exercise vigilance when operating within these segments. |
| VR2 | A bi-directional route connecting GBR, CCI, EIN. | 1000 | Traffic transiting OMR 75 shall at VRP EIN contact Minhad APP (122.500 MHz) for approval. |
| VR5 | A uni-directional route connecting SFP, FLP, HCG. | 1000 1500 between FLP and HCG | Do not climb to 1500 FT until established Southbound |
| VR6 | A bi-directional route connecting CCI, RCG, DFB, MKI. | 1000 | For segments between RCG, DFB, MKI see ENR 6-4.1 and ENR 6-4.2 |
| VR7 | A bi-directional route connecting EIN, RCG, WTK. | 1000 | Traffic transiting OMR 75 shall at VRP EIN contact Minhad APP (122.500 MHz) for approval. Dubai TWR may request to hold at WTK |
| VR8 | A bi-directional route connecting WTK, GBR. | 1000 | Dubai TWR may request to hold at WTK |

(1) Visual references on which routes are based are indicated on the chart.

VISUAL REPORTING POINTS (VRP)

| | | |
|---|---|---|
| CCI Country Club Intersection 25°10'48.00"N 055°19'12.00"E | EIN Emirates Intersection 25°07'12.00"N 055°21'55.00"E | FLP Flag Pole 25°14'28.56"N 055°16'04.46"E |
| GBR Garhoud Bridge 25°14'00.00"N 055°20'16.00"E | HCG Horse Crossing 25°12'33.00"N 055°14'19.00"E | MBR Al Maktoum Bridge 25°15'08.00"N 055°19'16.40"E |
| NBC Nikki Beach Club 25°14'54.00"N 055°15'17.00"E | QEL Queen Elizabeth 25°15'43.96"N 055°16'50.93"E | RCG Road Crossing 25°11'05.00"N 055°22'14.00"E |
| SFP Safa Park 25°11'18.00"N 055°14'29.00"E | SHP Sea Horse 25°13'23.00"N 055°13'56.00"E | STR Satwa Roundabout 25°14'06.00"N 055°16'43.80"E |
| WTK Water Tank 25°13'11.00"N 055°22'48.00"E | | |

LEGEND:

- CTR
- MBZ 2 A
- P, R, D Areas
- Birds Sanctuary
- Uni-directional Route
- Bi-directional Route
- Prominent Transmission Line
- Compulsory VRP
- On Request VRP
- Obstacle
- Group of Obstacles
- Lighted Obstacle
- Obstacle Height 1000 FT or Higher
- Group of Obstacles with Heights 1000 FT or Higher

Satellite images provided by Mohammed Bin Rashid Space Centre (November 2022)

CHANGES: Added Caution for VFR RTE VR1. Editorial.