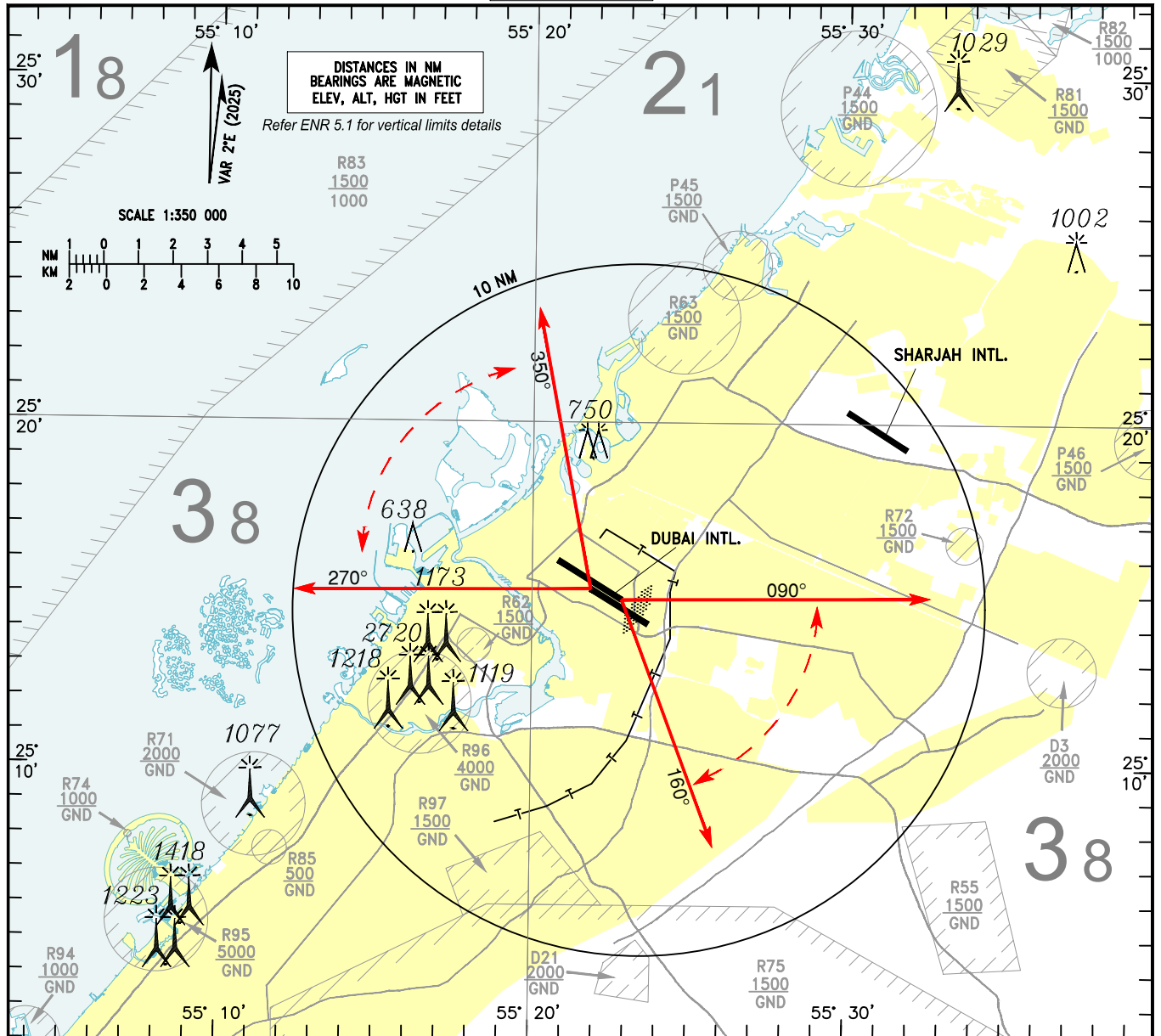


STANDARD AD ELEV 62 FT
DEPARTURE
CHART

D-ATIS (DEP)	131.700
DEP (N)	124.675
DEP (S)	121.025
TWR (N)	118.750
TWR (S)	119.550
GMC-1	118.350
GMC-2	121.650

DUBAI / INTL
OMNI DIRECTIONAL DEPARTURE
RWY 12L/R & RWY 30L/R



ATC will issue clearance for departure between indicated tracks as follows:

TL FL150
TA 13000

AFTER DEPARTURE FLY HEADING DEG CLIMB TO FEET

NOTES

After departure remain on Tower frequency until instructed to change frequency

Do not climb above ATC cleared level.

Minimum climb gradient 5.0% to 8000 FT (300 FT per NM) see OMDB AD 2.22.4

Advise ATC at startup if unable to comply.

(Procedures design gradient until passing 2000 FT : RWY 12L/R 3.3%, RWY 30L/R 5.0%)

Aircraft shall climb straight ahead to 1000 FT then turn to assigned heading.

Turn before the departure end of runway prohibited.

CLOSE-IN OBSTACLES			
RWY	TYPE	ELEV (FT)	DIST FM DER(M)
30R	APRON LT POLE	44	178
30R	WATER TOWER	46	200
30R	STREETLIGHT POLE	35	68
30R	FOD MONITOR POLE	33	35

Loss of communications

Conform to the requirements specified in ICAO Annex 2, Chapter 3, paragraph 3.6.5.2

Note: The requirement maintain the last assigned speed and level, or minimum flight altitude if higher, for a period of 7 minutes is amended to 3 minutes.

Following unsuccessful attempts to communicate via RTF call Dubai Approach on +971 4 887 9929