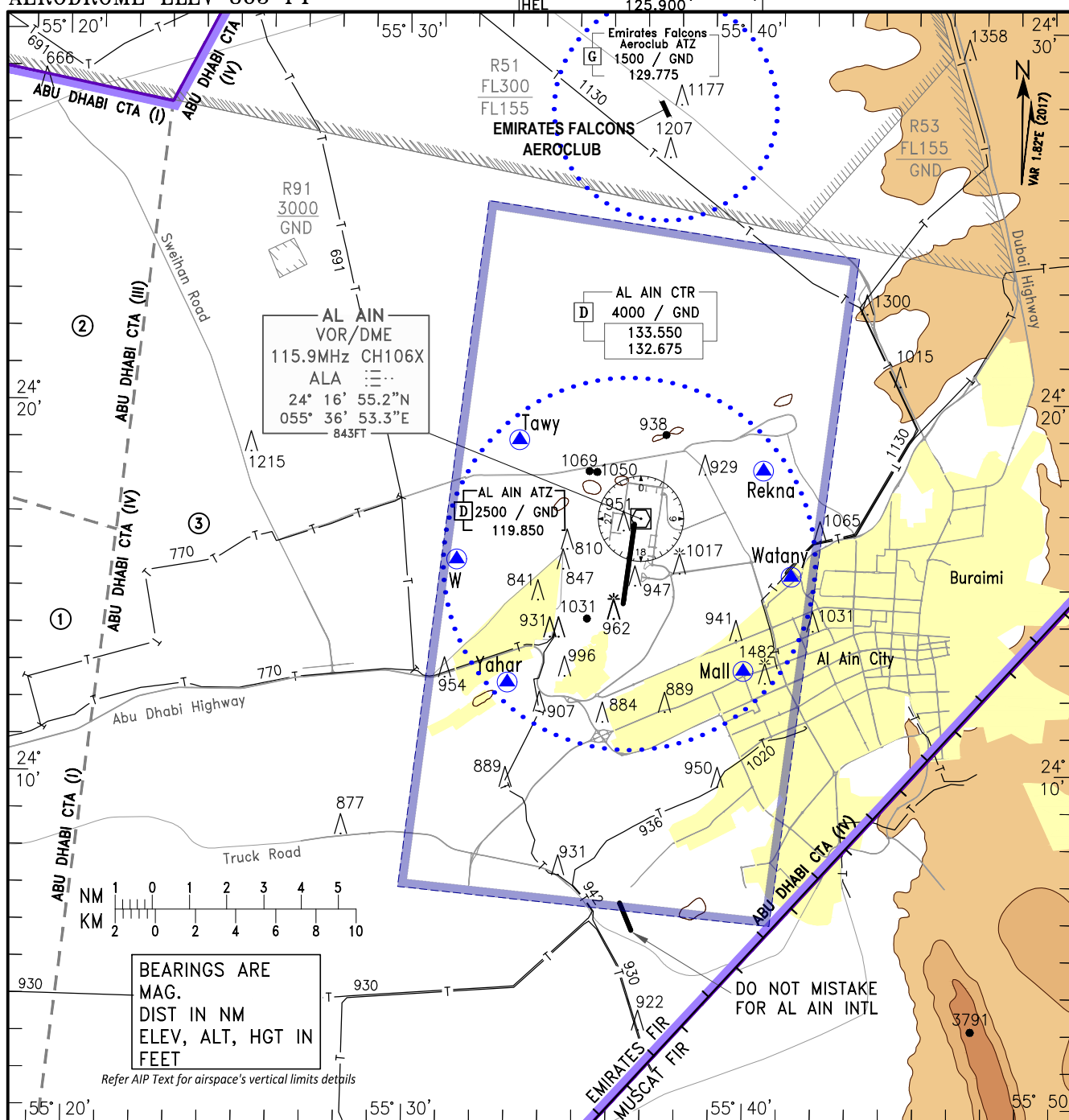


## VFR Helicopter ENTRY/EXIT Points

AL AIN/INTL  
United Arab Emirates

AERODROME ELEV 865 FT

ATIS/D-ATIS 126.050  
APP 133.550(PRI)  
132.675(PRI)  
135.350(SRY)  
TWR 119.850  
GMC 129.150(ACFT)  
118.950(Vehicles)  
HEL 125.900



## LEGEND

- Reporting Points CTR  
CTA  
CTA Subdivisions  
ATZ

**Yahar:** 241229N 0553300E  
**W:** 241547N 0553129E  
**Tawy:** 241901N 0553318E  
**Rekna:** 241814N 0554029E  
**Watany:** 241523N 0554119E  
**Mall:** 241250N 0553956E

## Local flying Restrictions

## Propeller Aircrafts &amp; Helicopters:

- \* Minimum altitude over built-up areas is 3000 FT QNH
- \* Circuit east of airport not authorised outside 3 NM from ALA VOR.
- \* Circuit west of airport not authorised over Sleimat or Al Yahar.

## Jet Aircrafts:

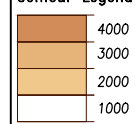
- \* Minimum altitude over Buraimi Town is 6000 FT QNH
- \* Minimum altitude over other built-up areas is 3000 FT QNH

For Radio Communication Failure Refer  
OMAL AD 2.22.2

- ① ABU DHABI CTA (I) CENTRAL  
FL155 / 1500 (a)  
1500 / GND  
124.400
- ② ABU DHABI CTA (III) NORTH  
3000 / 1500  
1500 / GND  
135.150
- ③ ABU DHABI CTA (IV) EAST  
9500 / 2000  
2000 / GND  
133.550  
132.675

(a) Lower limit 2500 FT within the lateral limits of OMR 73

## Contour Legend



CHANGES: Added obstacle. Editorial.