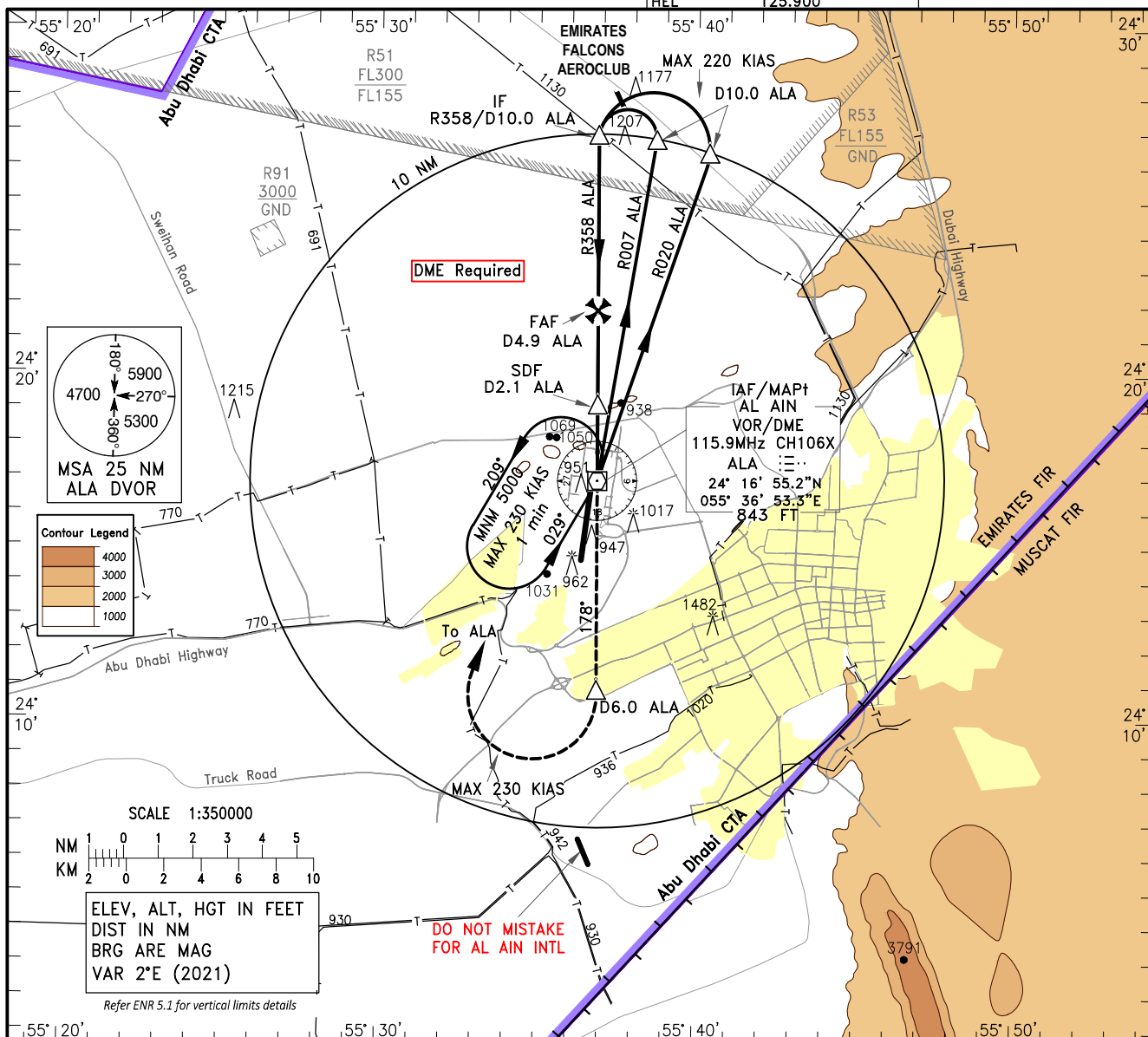


INSTRUMENT AERODROME ELEV 865 FT
 APPROACH HEIGHTS RELATED TO
 CHART-ICAO THR RWY 19 ELEV 838 FT

ATIS/D-ATIS 126.050
 APP 133.550/132.675(PRI)
 135.350(SRY)
 TWR 119.850
 GMC 129.150(ACFT)
 118.950(VEHICLES)
 HEL 125.900

AL AIN/INTL
 VOR Z RWY 19
 CAT A-E

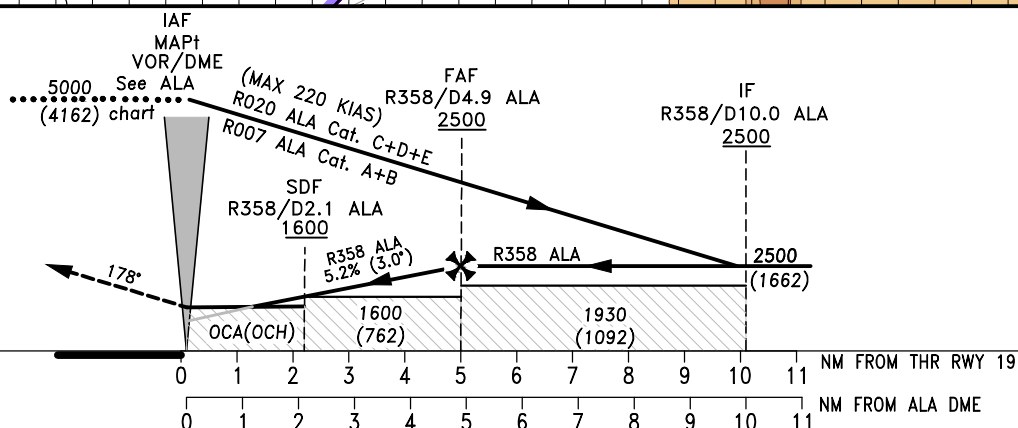



TL FL150
 TA 13000

MISSED APPROACH:

Continue climbing on R178 (TR 178°) ALA, at D6 ALA turn right (MAX 230 KIAS) direct to ALA (VOR/DME) to join holding pattern at 5000 FT.

ELEV 838
 (THR RWY 19)



OCA (OCH)		A	B	C	D	E						
Straight-in Approach	VOR/DME	1320 (482)										
Circling ^①		1350 (485)	1370 (505)	1730 (865)	1740 (875)	1930 (1065)						
① Circling not authorised east of the runway centreline.			Distance from ALA		NM	2	3	4	5	6	7	8
			Altitude		FT	1575	1895	2215	2530	2850	3170	3490
			Ground Speed		KTS	80	100	120	140	160	180	200
			Rate of Descent 3.0°		FT/MIN	425	531	637	743	849	955	1061

