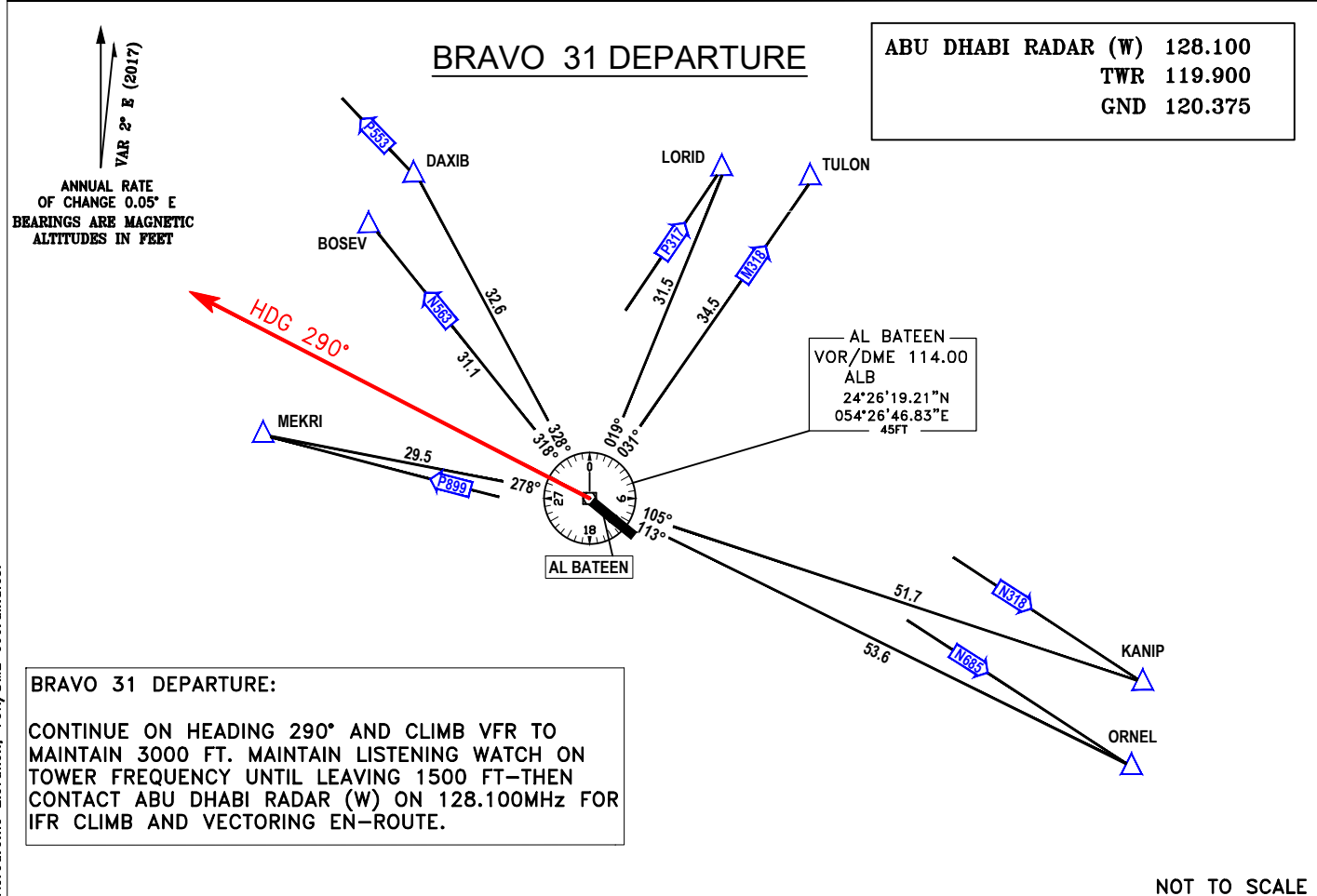
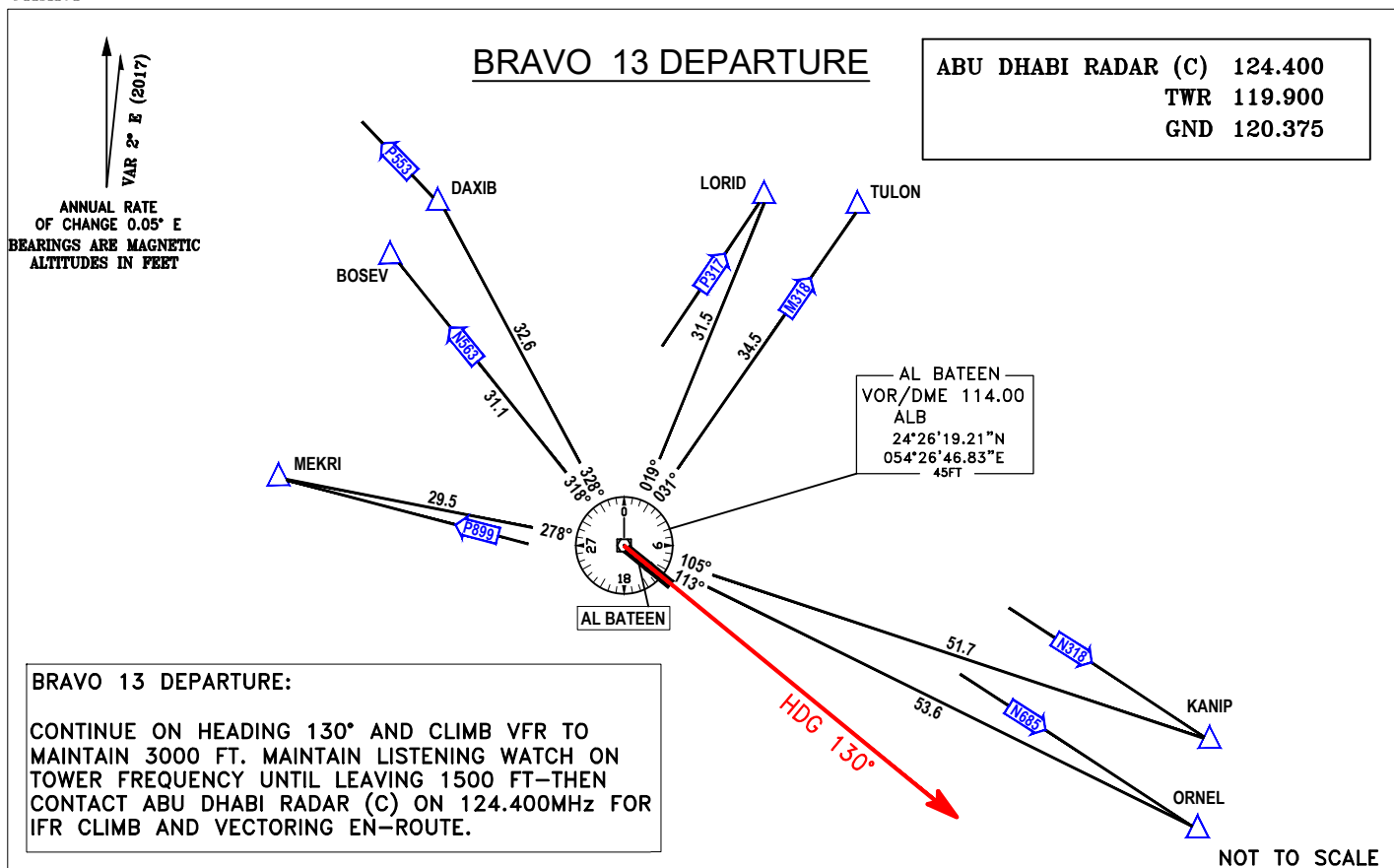


DEPARTURE
CHART

AD ELEV 18 FT

ABU DHABI/Al Bateen Executive
BRAVO 13 DEPARTURE
BRAVO 31 DEPARTURE

RADIO FAILURE PROCEDURE : SEE ENR 1.6.1.3 / Annex 2, Para 3.6.5.2

NOTES

Do not climb above ATC cleared level.

Extreme caution, close in obstacles exist (i.e. minarets)