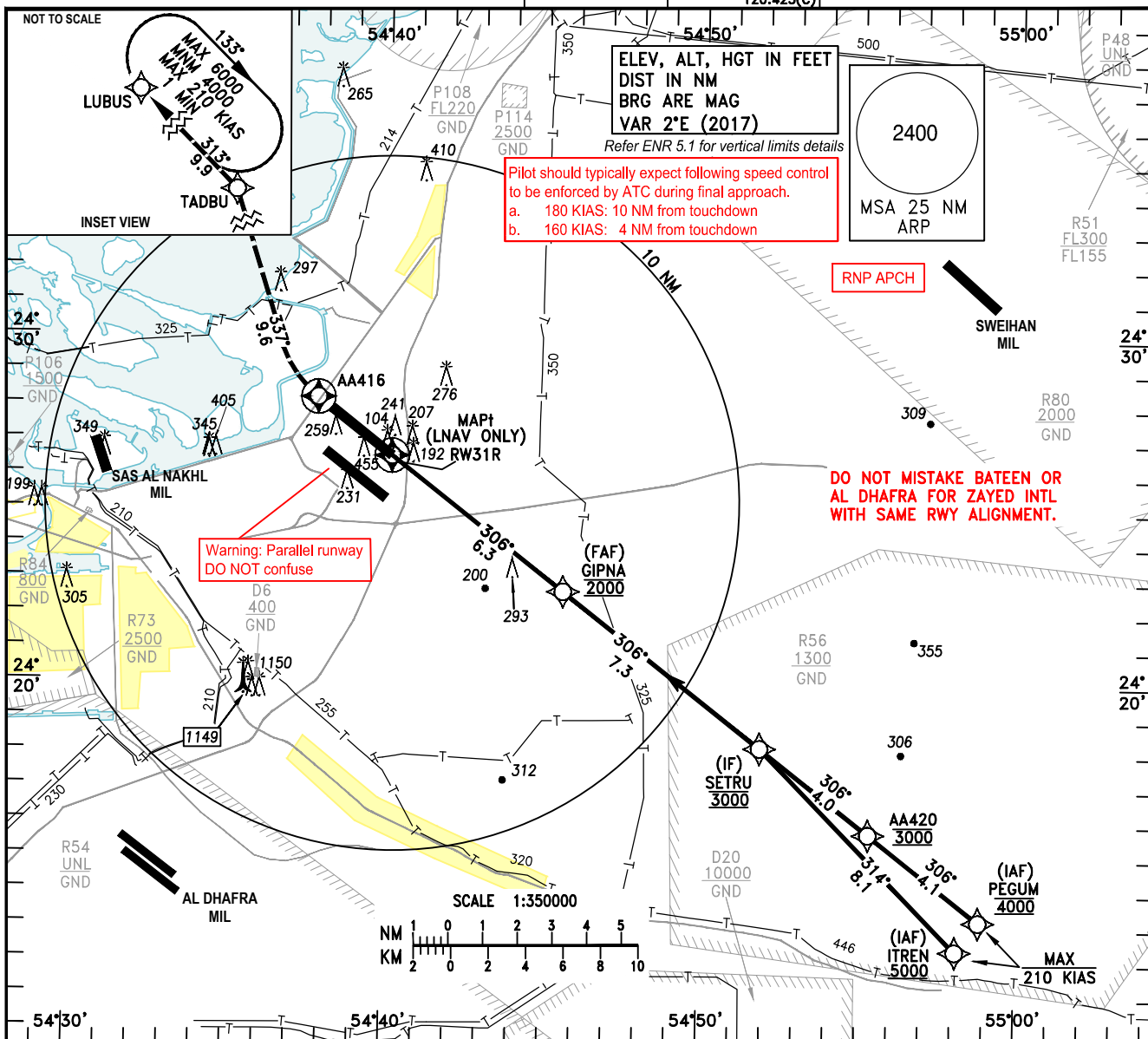


INSTRUMENT AD ELEV 83 FT
 APPROACH HEIGHTS RELATED TO
 CHART-ICAO THR RWY 31R ELEV 72 FT

ABU DHABI
 RADAR (W) 128.100
 RADAR (C) 124.400
 ABU DHABI
 DIRECTOR (S) 118.000
 DIRECTOR (N) 118.425

ABU DHABI/ ZAYED INTL
 RNP Z RWY 31R
 CAT A-DL



TL FL150
 TA 13000

MISSED APPROACH:

Proceed direct to AA416. Fly over AA416 and turn RIGHT (MAX 210 KIAS) on track 337° to TADBU, then turn LEFT (MAX 210 KIAS) to LUBUS climbing to 4000 FT and hold.

RDH

56 FT

ELEV 72

(THR RWY 31R)

NM FROM THR RWY 31R 0 1 2 3 4 5 6 7 8 9 10 11 12 13 14

OCA/(H)		A	B	C	D	D _L	NOTE 1.For uncompensated Baro-VNAV systems procedure not authorized below 0°C or above 69°C.				
Straight-in Approach	LNAV/VNAV	450 (378)	460 (388)	480 (408)	620 (548)	620 (548)					
	LNAV	710 (638)									
Circling		N/A									
				Distance from RW31R	NM	1	2	3	4	5	6
				Altitude	FT	425	722	1019	1316	1614	1911
				Ground Speed	KTS	80	100	120	140	160	180
				Rate of Descent (2.8°)	FT/MIN	400	495	595	690	790	890