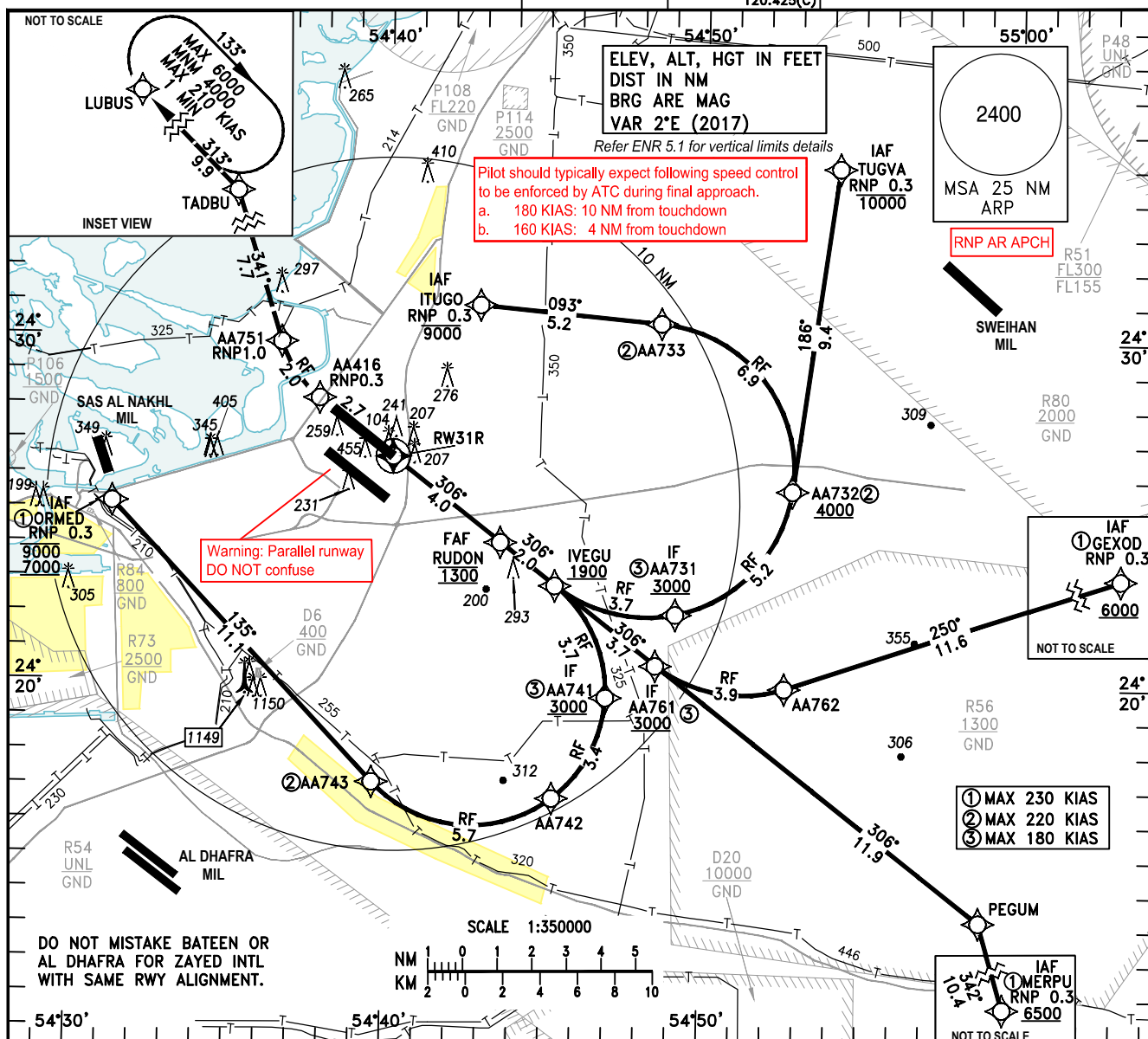


INSTRUMENT	AD ELEV 83 FT
APPROACH	HEIGHTS RELATED TO
CHART-ICAO	THR RWY 31R ELEV 72 FT

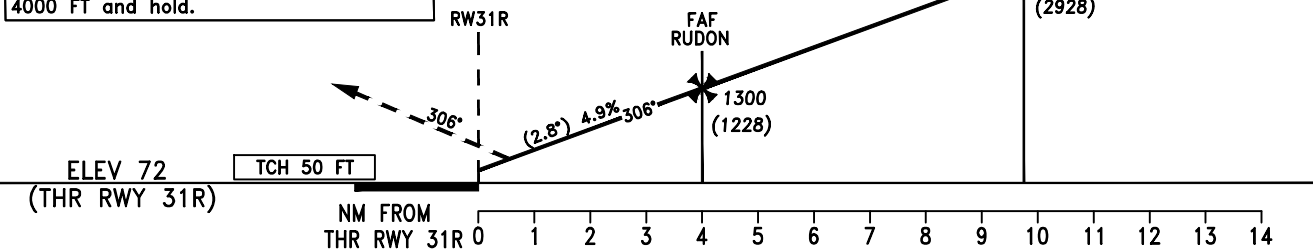
ABU DHABI RADAR (W)	128.100	ABU DHABI RADAR (E)	133.550
ABU DHABI RADAR (C)	124.400	ABU DHABI INFO	127.500
ABU DHABI DIRECTOR (S)	118.000	TWR	119.200(S) 118.675(N)
ABU DHABI DIRECTOR (N)	118.425	GND	123.975(S) 121.950(N)

ABU DHABI/ZAYED INTL  
RNP Y RWY 31R (AR)  
CAT A-DI



**MISSED APPROACH:**

Climb straight ahead to AA416, turn RIGHT (MAX 210 KIAS) with 3.26NM radius to AA751, to TADBU, to LUBUS at 4000 FT and hold.



DA/(H)		A	B	C	D	D <sub>L</sub>	NOTE								
Straight-in Approach							1. Authorization Required 2. RF Required 3. Dual GNSS and IRU Required 4. For uncompensated Baro-VNAV systems procedure not authorized below 0°C or above 69°C								
	RNP 0.3 ①	590(518)	600(528)	610(538)	620(548)	620(548)									
① Transition to missed approach RNP for lateral guidance must not be initiated prior to the along-track position of DA/H				Distance from RWY31R		NM	1	2	3	4	5	6			
				Altitude		FT	420	716	1014	1311	1608	1905			
				Ground Speed		KTS	80	100	120	140	160	180			
				Rate of Descent (2.8°)		FT/MIN	400	495	595	690	790	890			