

**INSTRUMENT
APPROACH
CHART-ICAO**

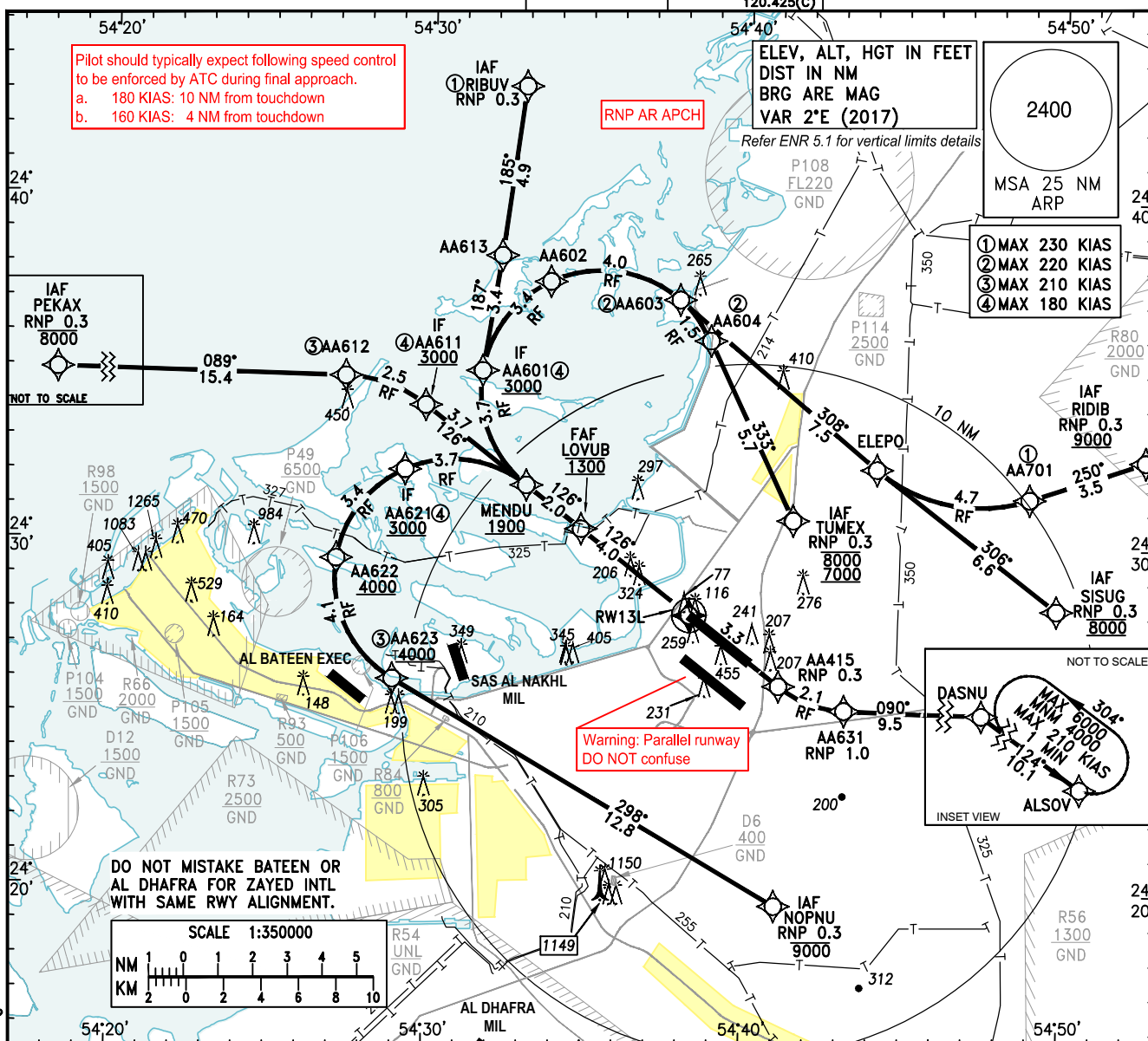
**AD ELEV 83 FT
HEIGHTS RELATED TO
THR RWY 13L ELEV 62 FT**

ABU DHABI
RADAR (W) 128.100
ABU DHABI
RADAR (C) 124.400
ABU DHABI
DIRECTOR (S) 118.000
ABU DHABI
DIRECTOR (N) 118.425

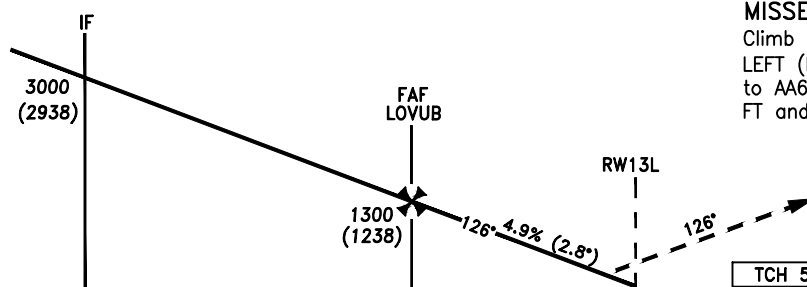
ABU DHABI
RADAR (E) 133.550
ABU DHABI
INFO 127.500
TWR 119.200(S)
118.675(N)
123.975(S)
121.950(N)
120.425(C)

GND

**ABU DHABI/ZAYED INTL
RNP Y RWY 13L (AR)
CAT A-D_L**



TL FL150
TA 13000



MISSED APPROACH:

Climb straight ahead to AA415, turn LEFT (MAX 210 KIAS) with 3.26NM radius to AA631, to DASNU, to ALSOV at 4000 FT and hold.

NM FROM
THR RWY 13L 11 10 9 8 7 6 5 4 3 2 1 0

**ELEV 62
(THR RWY 13L)**

DA/(H)		A	B	C	D	D _L
Straight-in Approach	RNP 0.3 ①	485(423)	495(433)	505(443)	515(453)	515(453)

NOTE

1. Authorization Required
2. RF Required
3. Dual GNSS and IRU Required
4. For uncompensated Baro-VNAV systems procedure not authorized below 0°C or above 69°C

① Transition to missed approach RNP for lateral guidance must not be initiated prior to the along-track position of DA/H

Distance from RWY13L	NM	1	2	3	4	5	6
Altitude	FT	409	706	1003	1300	1598	1895
Ground Speed	KTS	80	100	120	140	160	180
Rate of Descent (2.8°)	FT/MIN	400	495	595	690	790	890