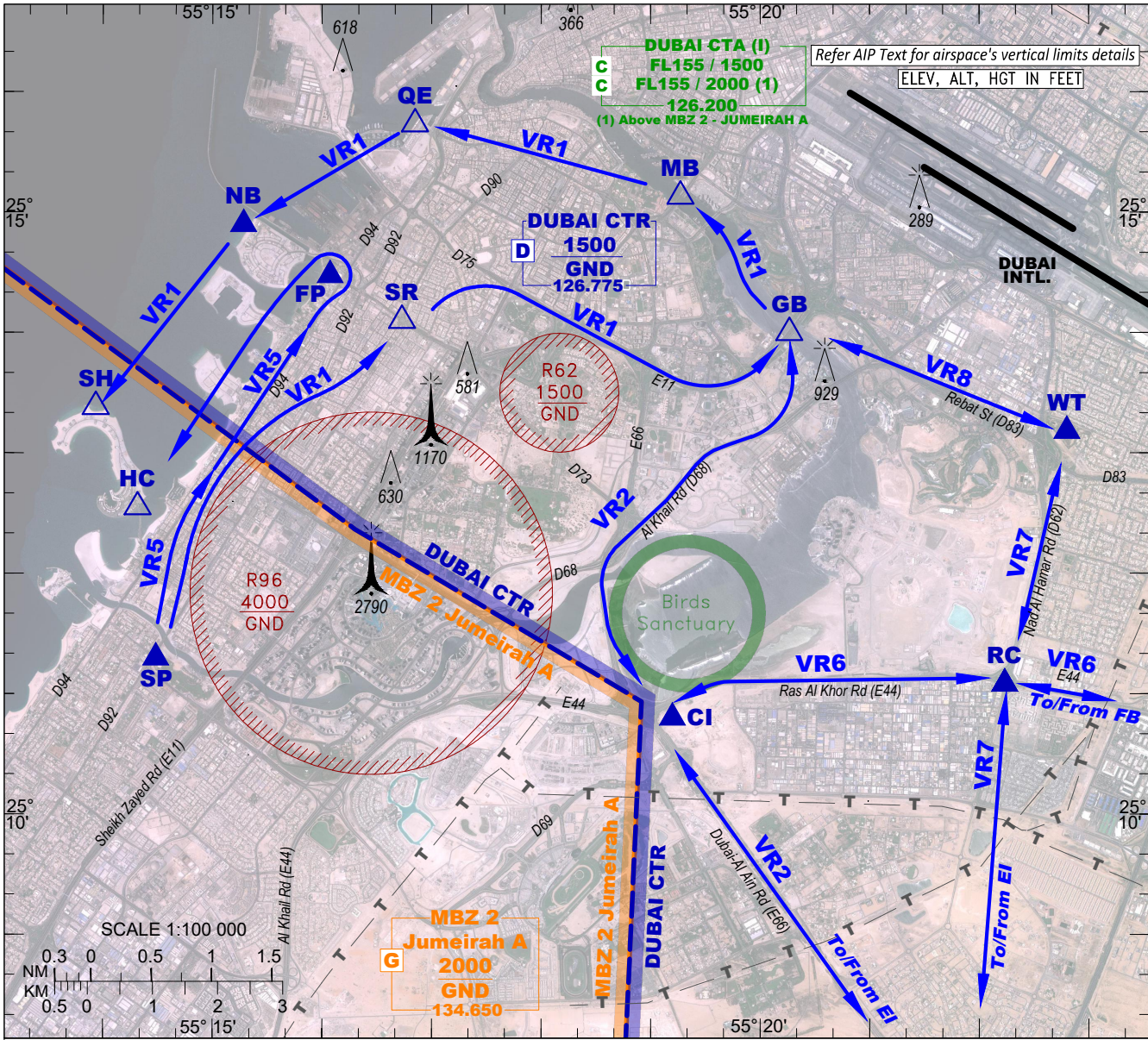


VFR CHART

DUBAI TWR 126.775
MBZ 2 134.650

DUBAI CREEK VFR ROUTES



- VFR traffic is not permitted to enter the DUBAI CTR without clearance from Dubai Tower which may instruct VFR traffic to hold outside the DUBAI CTR until further advised.
- VFR traffic operating within or transiting through the DUBAI CTR shall fly the above VFR routes, comply with specified altitude restrictions and defined VRPs.
- Military, Police, Rescue and VIP flights may request direct routing from Dubai Tower.
- Non-standard VFR routing inside DUBAI CTR is subject to prior approval from Dubai Tower.
- For SVFR clearance into the DUBAI CTR, pilots shall contact Dubai Tower inbound to Safa Park (SP) or Country Club Intersection (CI).

VFR ROUTES:

NAME	DESCRIPTION (1)	MAX ALT(FT)	REMARKS
VR1	A uni-directional route connecting SP, SR, GB, MB, QE, NB, SH.	1000 1500 between NB and SH	Opposite direction traffic may be expected along VR1 between SH-NB-QE-MB-GB due to seaplane operations arriving and departing to/from Creek and Port Rashid water runways
VR2	A bi-directional route connecting GB, CI, EI	1000	Traffic transiting OMR 75 shall at VRP EI contact Minhad APP (122.500 MHz) for approval.
VR5	A uni-directional route connecting SP, FP, HC.	1000 1500 between FP and HC	Do not climb to 1500 FT until established Southbound
VR6	A bi-directional route connecting CI, RC, FB, MK, AB.	1000	For segments between RC, FB, MK, AB see ENR 6-4.1 and ENR 6-4.2
VR7	A bi-directional route connecting EI, RC, WT	1000	Traffic transiting OMR 75 shall at VRP EI contact Minhad APP (122.500 MHz) for approval. Dubai TWR may request to hold at WT
VR8	A bi-directional route connecting WT, GB.	1000	Dubai TWR may request to hold at WT

(1) Visual references on which routes are based are indicated on the chart.

VISUAL REPORTING POINTS (VRP)

CI Country Club Intersection 25°10'48.00"N 055°19'12.00"E

GB Garhoud Bridge 25°14'00.00"N 055°20'16.00"E

NB Nikki Beach Club 25°14'54.00"N 055°15'17.00"E

SH Sea Horse 25°13'23.00"N 055°13'56.00"E

WT Water Tank 25°13'11.00"N 055°22'48.00"E

EI Emirates Intersection 25°07'12.00"N 055°21'55.00"E

HC Horse Crossing 25°12'33.00"N 055°14'19.00"E

QE Queen Elizabeth 25°15'43.96"N 055°16'50.93"E

SP Safa Park 25°11'18.00"N 055°14'29.00"E

FP Flag Pole 25°14'28.56"N 055°16'04.46"E

MB Al Maktoum Bridge 25°15'08.00"N 055°19'16.40"E

RC Road Crossing 25°11'05.00"N 055°22'14.00"E

SR Satwa Roundabout 25°14'06.00"N 055°16'43.80"E

LEGEND:
CTR
MBZ 2 A
P, R, D Areas
Birds Sanctuary
Uni-directional route
Bi-directional route
Prominent transmission line
Fly-by Compulsory VRP
Fly-by On request VRP
Obstacle
Group of obstacles
Lighted Obstacle
Obstacle 1000 FT or higher

Satellite images provided by Mohammed Bin Rashid Space Centre (October 2020)

CHANGES: Added OBST 618. Editorial.