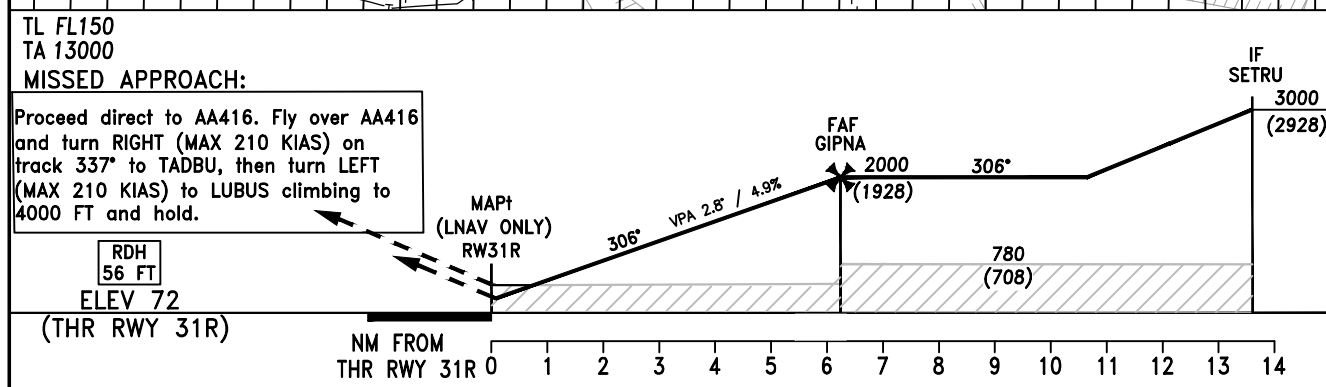


ABU DHABI / Intl.
RNAV(GNSS) Z RWY31R
CAT A-DI



OCA/(H)		A	B	C	D	D _L	NOTE					
Straight-in Approach	LNAV/VNAV	450 (378)	460 (388)	480 (408)	620 (548)	620 (548)	1.For uncompensated Baro-VNAV systems procedure not authorized below 0°C or above 69°C.					
	LNAV	710 (638)										
Circling		N/A										
				Distance from RW31R		NM	1	2	3	4	5	6
				Altitude		FT	425	722	1019	1316	1614	1911
				Ground Speed		KTS	80	100	120	140	160	180
				Rate of Descent (2.8°)		FT/MIN	400	495	595	690	790	890

CHANGES: Updated Transmission Line. Editorial.