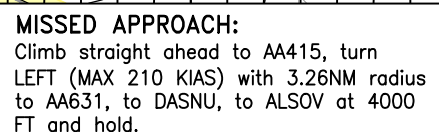
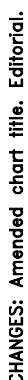


ABU DHABI/Intl.
RNP Y RWY 13L (AR)
CAT A-D₁



DA/(H)		A	B	C	D	D _L	NOTE							
Straight-in Approach							1. Authorization Required 2. RF Required 3. Dual GNSS and IRU Required 4. For uncompensated Baro-VNAV systems procedure not authorized below 0°C or above 69°C							
	RNP 0.3 ①	485(423)	495(433)	505(443)	515(453)	515(453)								
① Transition to missed approach RNP for lateral guidance must not be initiated prior to the along-track position of DA/H				Distance from RWY13L		NM	1	2	3	4	5	6		
				Altitude		FT	409	706	1003	1300	1598	1895		
				Ground Speed		KTS	80	100	120	140	160	180		
				Rate of Descent (2.8")		FT/MIN	400	495	595	690	790	890		