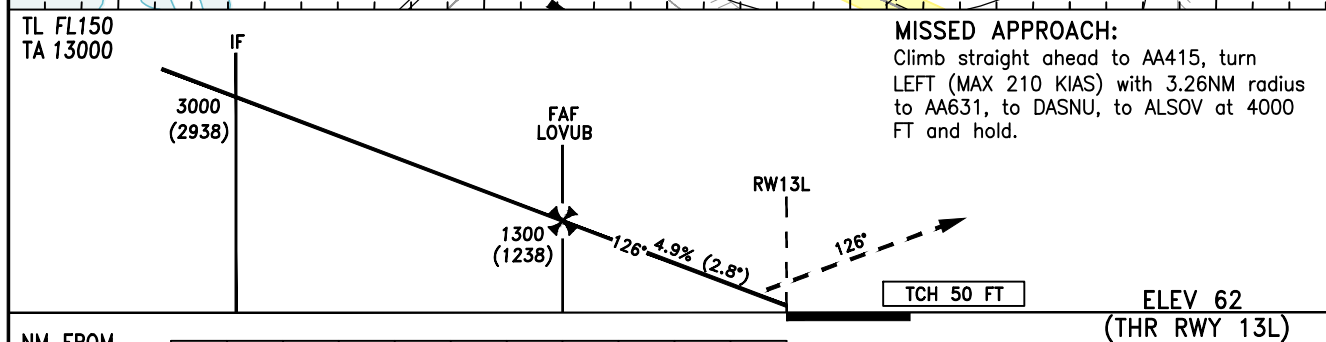
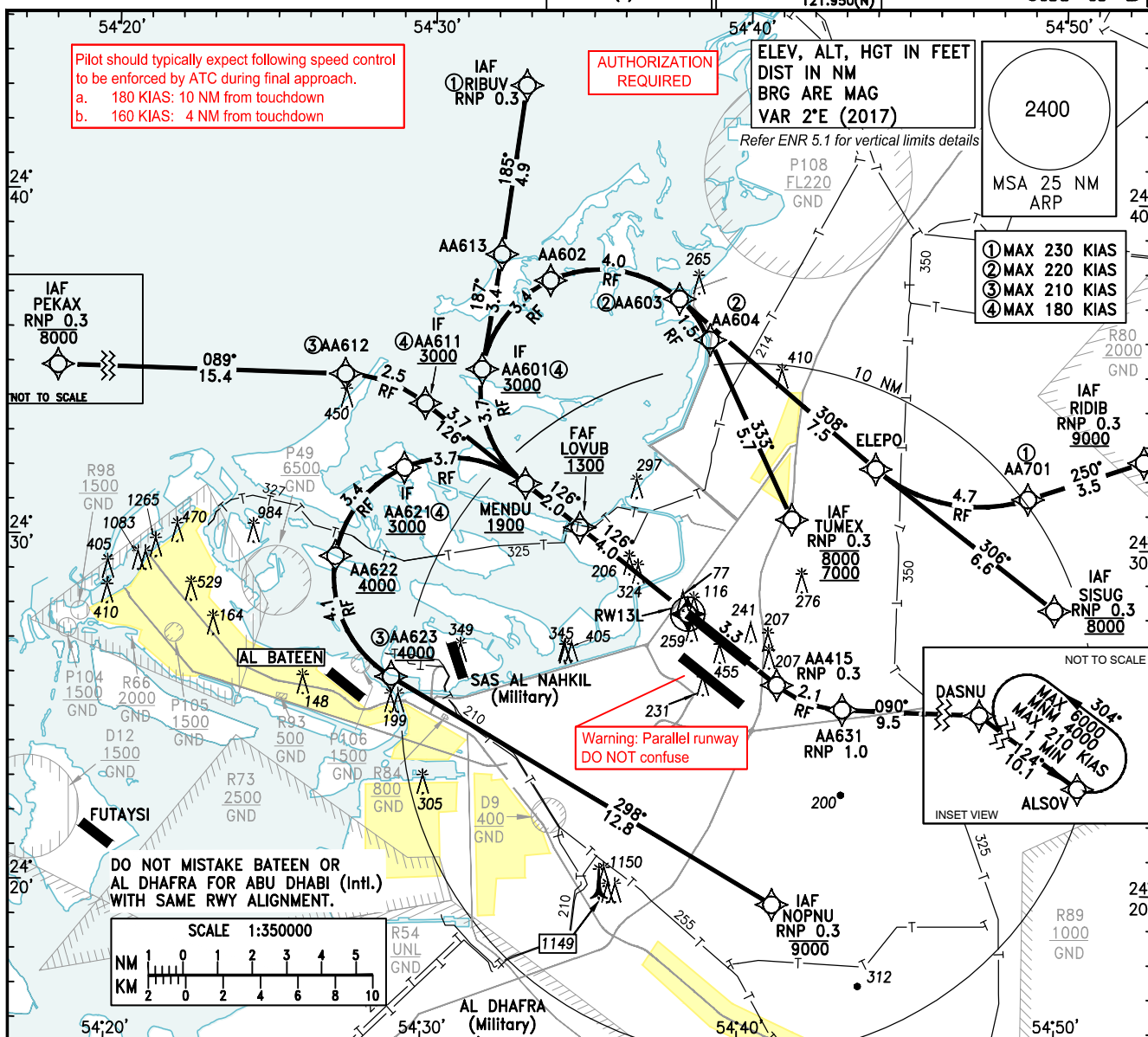


INSTRUMENT AERODROME ELEV 83 FT
APPROACH HEIGHTS RELATED TO
CHART-ICAO THR RWY 13L ELEV 62 FT

ABU DHABI
RADAR (W)
128.100
ABU DHABI
RADAR (C)
124.400
ABU DHABI
DIRECTOR (S)
118.000
ABU DHABI
DIRECTOR (N)
118.425

ABU DHABI
RADAR (E)
133.550
ABU DHABI
INFO
127.500
TWR
119.200(S)
118.675(N)
123.975(S)
121.950(N)
GND

ABU DHABI/Intl.
RNAV(RNP) Y RWY 13L
CAT A-D



NM FROM										THR RWY 13L										11	10	9	8	7	6	5	4	3	2	1	0
DA/(H)							A		B		C		D		D _L		NOTE 1. Authorization Required 2. RF Required 3. Dual GNSS and IRU Required 4. For uncompensated Baro-VNAV systems procedure not authorized below 0°C or above 69°C														
Straight-in Approach																															
	RNP 0.3 ①						485(423)		495(433)		505(443)		515(453)		515(453)																
① Transition to missed approach RNP for lateral guidance must not be initiated prior to the along-track position of DA/H										Distance from RWY13L		NM	1	2	3	4	5	6													
										Altitude		FT	409	706	1003	1300	1598	1895													
										Ground Speed		KTS	80	100	120	140	160	180													
										Rate of Descent (2.8°)		FT/MIN	400	495	595	690	790	890													