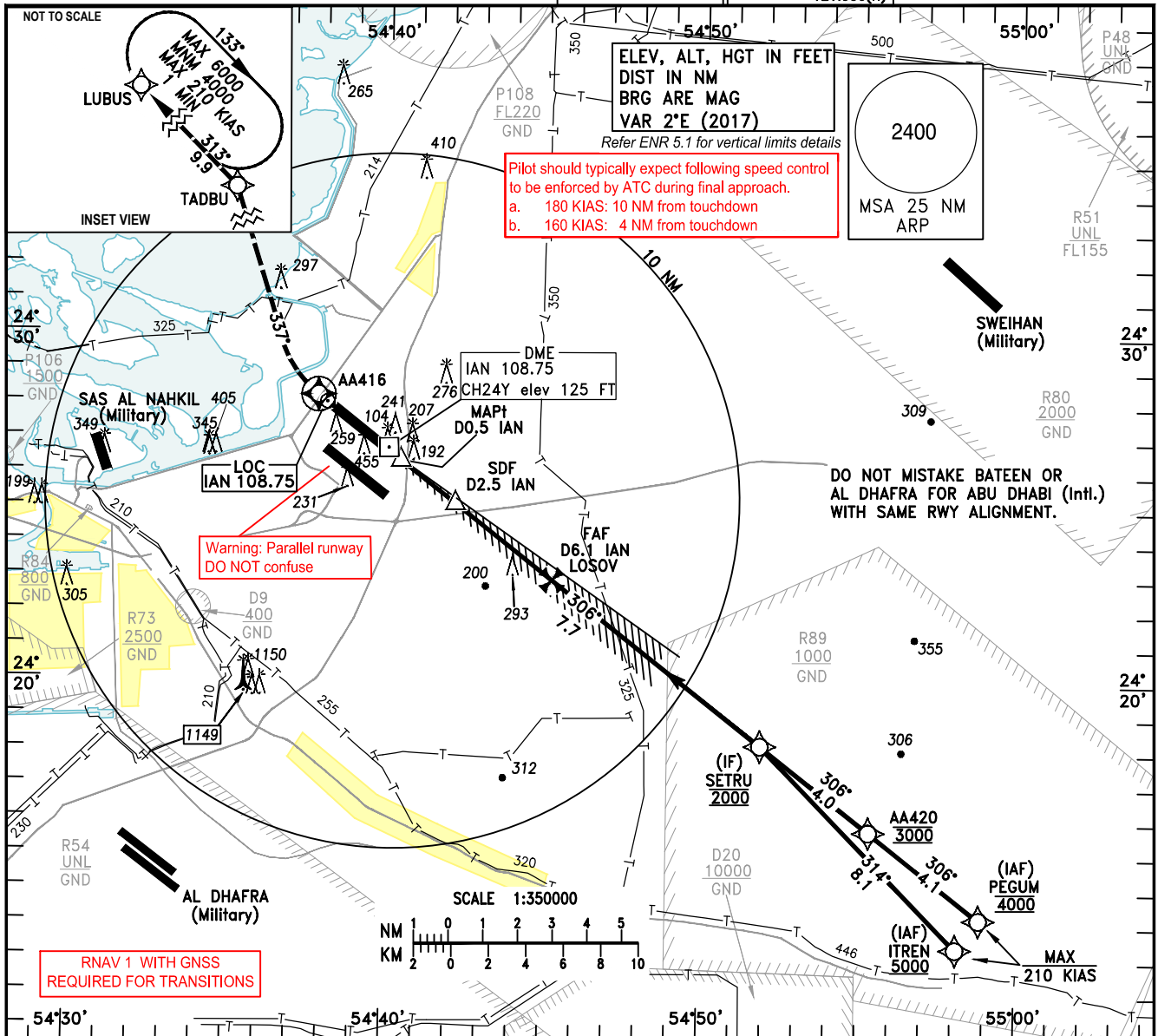


INSTRUMENT AERODROME ELEV 83 FT
APPROACH HEIGHTS RELATED TO
CHART-ICAO THR RWY 31R ELEV 72 FT

ABU DHABI RADAR (W)	128.100	ABU DHABI RADAR (E)	133.550
ABU DHABI RADAR (C)	124.400	ABU DHABI INFO	127.500
ABU DHABI DIRECTOR (S)	118.000	TWR	119.200(S)
ABU DHABI DIRECTOR (N)	118.425	GND	118.675(N)
			123.975(S)
			121.950(N)

ABU DHABI / Intl.
ILS RWY 31R
CAT A-D_L



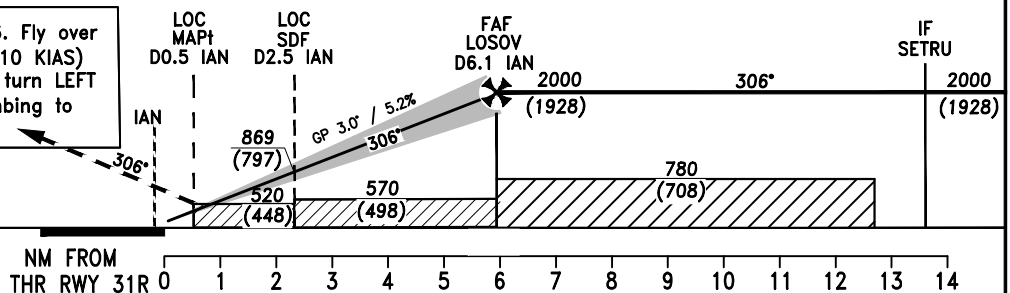
TL FL150
TA 13000

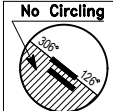
MISSED APPROACH:

Climb straight ahead to AA416. Fly over AA416 and turn RIGHT (MAX 210 KIAS) on track 337° to TADBU, then turn LEFT (MAX 210 KIAS) to LUBUS climbing to 4000 FT and hold.

ILS RDH 56 FT

ELEV 72
(THR RWY 31R)



OCA/(H)		A		B		C		D		D _L		NOTE								
Straight-in Approach	ILS CAT I ①	211(139)		219(147)		230(158)		242(170)		244(172)		1. Aircraft unable to comply with RNAV 1 requirement inform ATC on first CTC.								
	ILS CAT II ②	120(48)		131(59)		144(72)		157(85)		158(86)		2. DME IAN zero indication at TDZ.								
	LOC	520(448)										3. OM and MM replaced by DME IAN.								
	LOC without SDF	570(498)										DME IAN 4.0 NM 1346 (1274)								
Circling ④		750 (667)				850 (767)								DME IAN 0.7 NM 295 (223)						
① MNM DH CAT A,B,C,D,D _L -200FT		<div>No Circling</div> 				Distance from DME IAN		NM	1	2	3	4	5	6						
② MNM DH CAT A,B,C,D,D _L -100FT						Altitude		FT	390	709	1027	1346	1664	1983						
③ ILS CAT III B AVBL- MNM RVR 50m						Ground Speed		KTS	80	100	120	140	160	180						
④ Circling not authorised SW of the runway centreline						Rate of Descent (3°)		FT/MIN	425	531	637	743	849	955						

