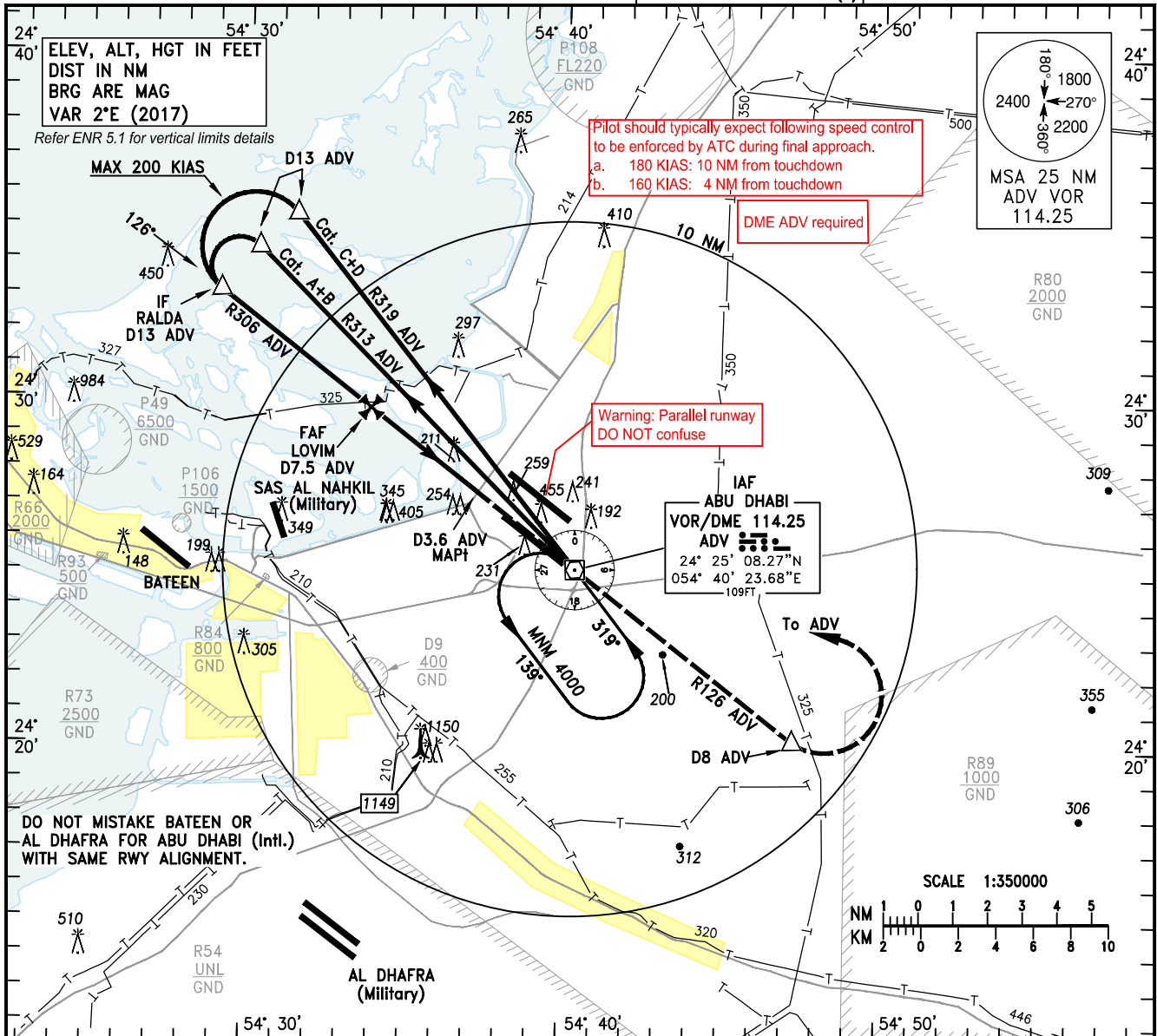


INSTRUMENT
APPROACH
CHART-ICAO

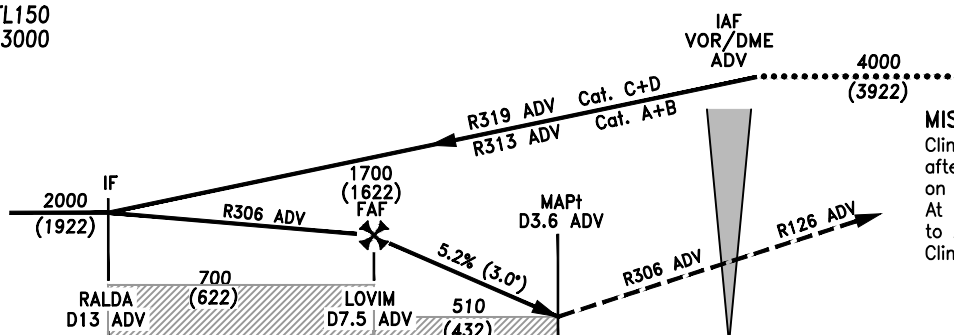
AERODROME ELEV 83 FT
HEIGHTS RELATED TO
THR RWY 13R ELEV 78 FT

ABU DHABI RADAR (W) 128.100
ABU DHABI RADAR (C) 124.400
ABU DHABI DIRECTOR (S) 118.000
TWR 119.200(S)
118.675(N)
123.975(S)
121.950(N)
GND

ABU DHABI/Intl.
VOR RWY 13R
CAT A-D



TL FL150
TA 13000




MISSED APPROACH:

Climb straight ahead on R306 ADV, after passing ADV, track on R126 ADV. At 8 DME ADV turn left to track to ADV and hold. Climb to 4000 FT.

ELEV 78

(THR RWY 13R)

13 12 11 10 9 8 7 6 5 4 3 2 1 0 NM FROM THR RWY 13R

| OCA/(H) | | A | | | | B | | | | C | | | | D | | | |
|---|---------|---|-----------------------|----------|----------|--------|-----|-----|------|------|------|------|--|---|--|--|--|
| Straight-in Approach | VOR/DME | 510(432) | | | | | | | | | | | | | | | |
| | | | | | | | | | | | | | | | | | |
| | | | | | | | | | | | | | | | | | |
| Circling ① | | 750(672) | 750(672) | 850(772) | 850(772) | | | | | | | | | | | | |
| ① Circling not authorised SW of runway centreline | |  | Distance from THR 13R | | | NM | 1 | 2 | 3 | 4 | 5 | 6 | | | | | |
| | | | Altitude | | | FT | 446 | 765 | 1083 | 1402 | 1720 | 2039 | | | | | |
| | | | Ground Speed | | | KTS | 80 | 100 | 120 | 140 | 160 | 180 | | | | | |
| | | | Rate of Descent (3°) | | | FT/MIN | 425 | 531 | 637 | 743 | 849 | 955 | | | | | |
| | | | | | | | | | | | | | | | | | |

CHANGES: Updated Transmission Line. Editorial.