

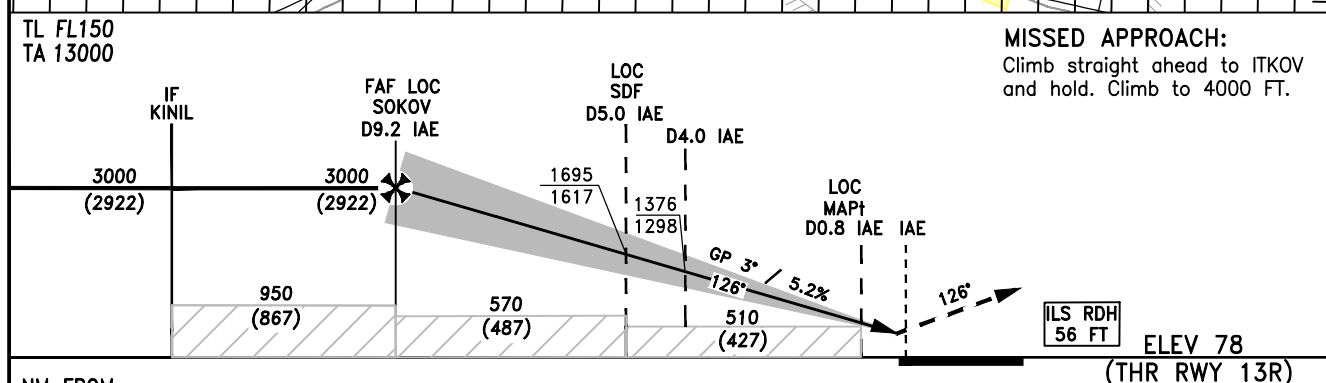
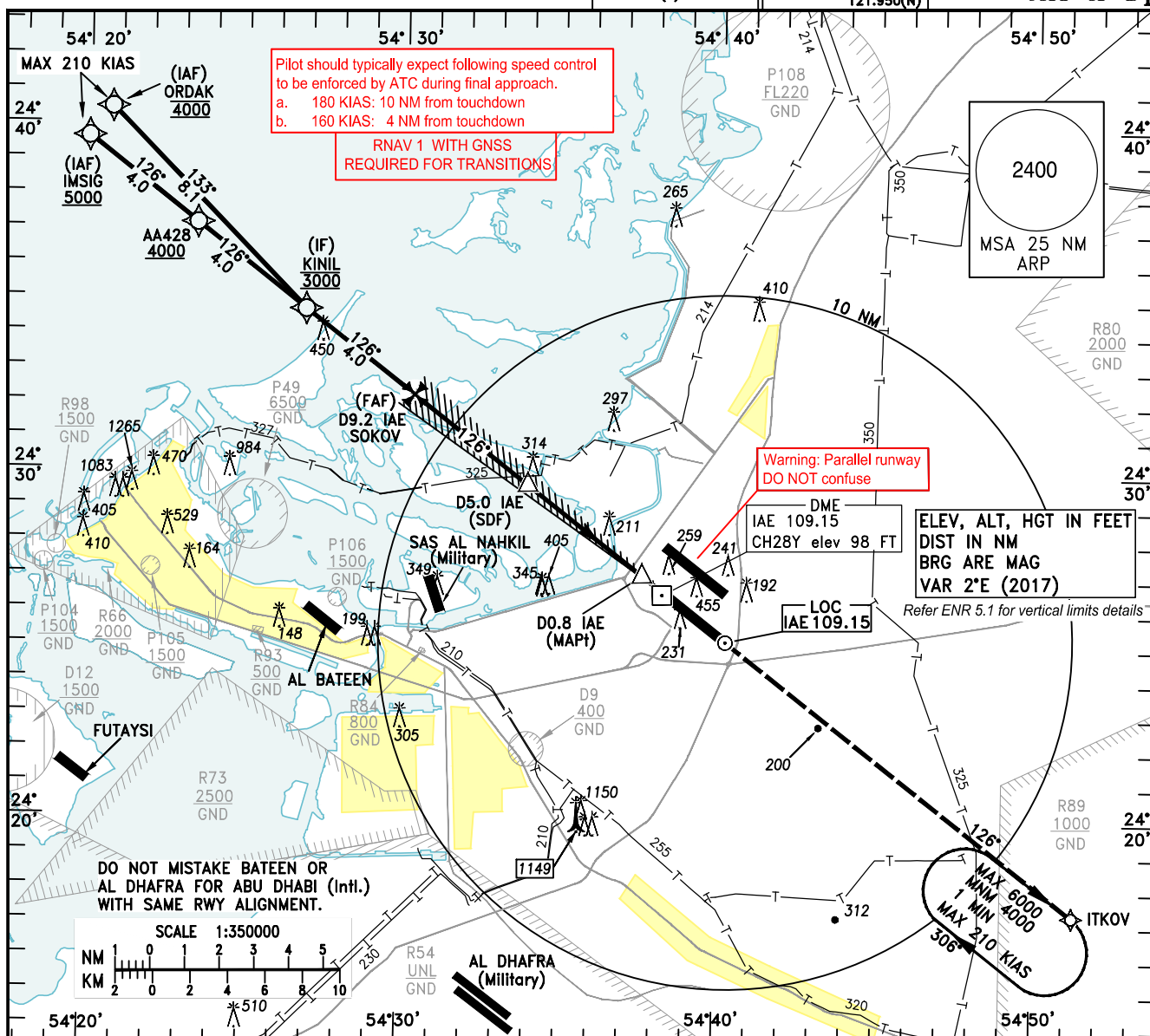
INSTRUMENT
APPROACH
CHART-ICAO

AERODROME ELEV 83 FT
HEIGHTS RELATED TO
THR RWY 13R ELEV 78 FT

ABU DHABI
RADAR (W) 128.100
ABU DHABI
RADAR (C) 124.400
ABU DHABI
DIRECTOR (S) 118.000
ABU DHABI
DIRECTOR (N) 118.425

ABU DHABI
RADAR (E) 133.550
ABU DHABI
INFO 127.500
TWR 119.200(S)
118.675(N)
123.975(S)
121.950(N)
GND

ABU DHABI/Intl.
ILS RWY 13R
CAT A-DL



OCA/(H)		A	B	C	D	DL
Straight-in Approach	ILS CAT I ①	217(139)	225(147)	234(156)	243(165)	245(167)
	LOC	510(427)				
	LOC without SDF	570(487)				
Circling ②		750(667)	850(767)	870(787)		

NOTE

- Aircraft unable to comply with RNAV 1 requirement can expect RADAR vectors to LOC interception.
- DME IAE zero indication at TDZ.
- OM and MM replaced by DME IAE.
DME IAE 4.0 NM 1376 (1298)
DME IAE 0.7 NM 325 (247)

① MNM DH CAT A, B, C, D, DL - 200FT

② Circling not authorised SW of the runway centreline

No Circling

Distance from DME IAE	NM	1	2	3	4	5	6
Altitude	FT	420	739	1058	1376	1695	2014
Ground Speed	KTS	80	100	120	140	160	180
Rate of Descent (3°)	FT/MIN	425	531	637	743	849	955